

## .....**HOW TO USE WEBDAV DRAG AND DROP CAPABILITIES**

WebCT 4.1 supports a new drag and drop file transfer tool called Web-based Distributed Authoring and Versioning or WebDAV.

WebDAV is easy to use and includes the following capabilities:

- ❖ Compatible with Macintosh and PC
- ❖ Has a quick and easy setup
- ❖ Users have the ability to drag-and-drop folders and files to their WebCT course from their computer's file manager

The setup for WebDAV involves using Web Folders in Windows 98, My Network Places in Windows 2000/ME/XP, or the free Goliath WebDAV client for Macintosh computers <http://www.webdav.org/goliath/>.

A folder must be created for each course the designer will want to access. If you have three different WebCT courses, you will need to set up three separate Web Folders in your computers manage files area so that you can access the files separately in each course.

## System Requirements

WebDAV is compatible with the following browsers:

- ❖ IE 5 or above

**Note:** WebDAV does not support Netscape.

WebDAV is compatible with the following Operating Systems:

- ❖ Windows 95/98/NT/2000/ME/XP
- ❖ MacOS 8.1 or higher (users need to install additional software to use WebDAV. Goliath is available from <http://www.webdav.org/goliath/>).

## Known Problems with WebDAV

If you choose to setup the WebDAV program on a Windows 2000 or XP operating system, you may experience a recursive folder problem and may be asked to login to the server every time you select a subfolder. This will be evident when you try to select a

single folder and there are endless subfolders displayed under the main folder. To remedy this problem, you will need to delete the My Network Places connection you created and create it again. To fix this problem, create the link again and remove the (:443) port number from the URL that references the server. If the request for a login appears when selecting a subfolder, select cancel. You do not have to enter a login at this screen.

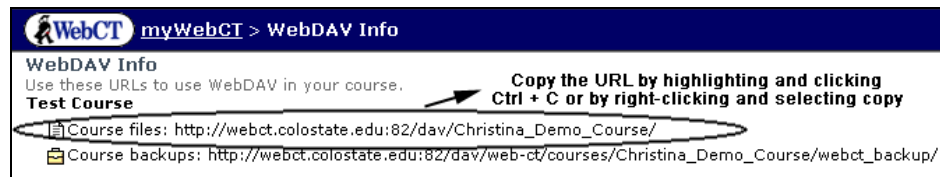
## Setting Up WebDAV on a PC

Windows 2000/ME/XP allows you to setup a new Network Place that is used by WebDAV to connect to the WebCT server.

**Note:** Each WebCT course must have a different link to the Manage Files area.

To setup WebDAV on a Windows 2000/ME/XP operating system, complete the following tasks:

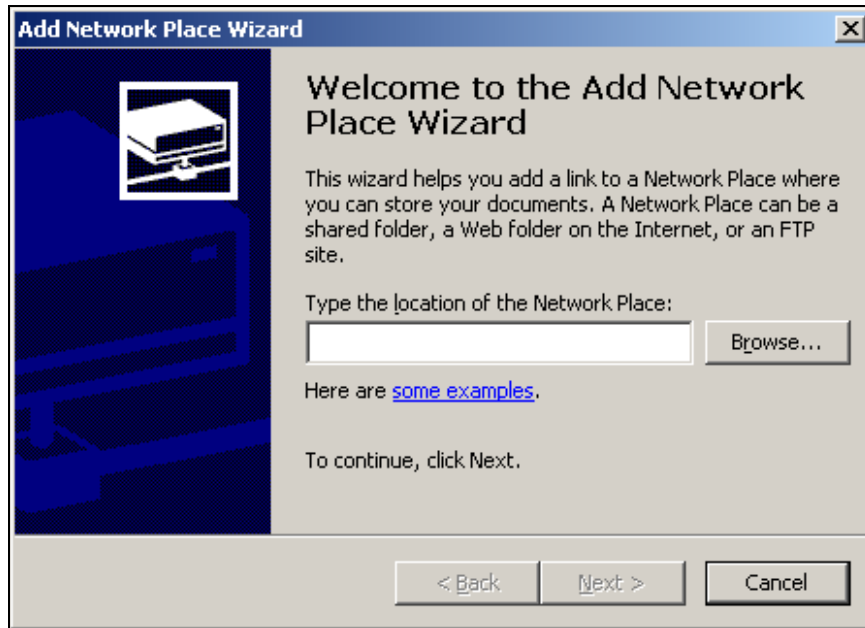
1. Navigate to your WebCT course.
2. Select the **WebDAV Info** link from the top of your myWebCT page. The WebDAV information appears:



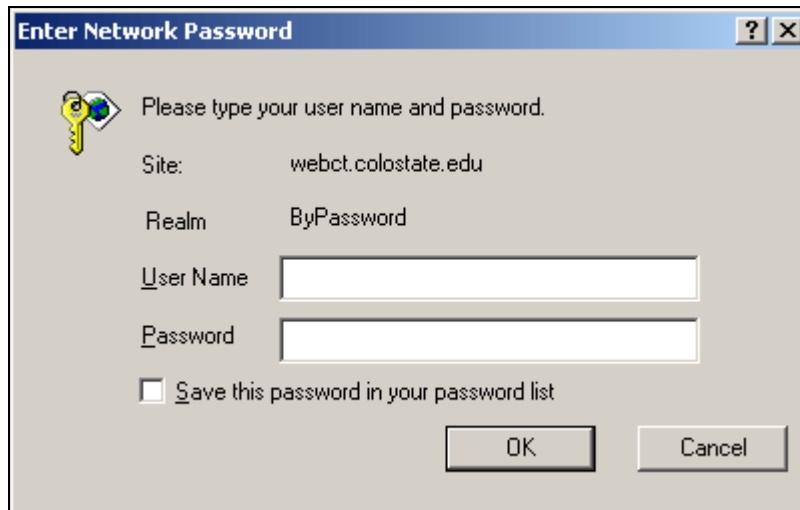
3. Copy the WebDAV URL course files link.
4. Navigate to your desktop or Windows Explorer.
5. Click on the **My Network Places** icon.



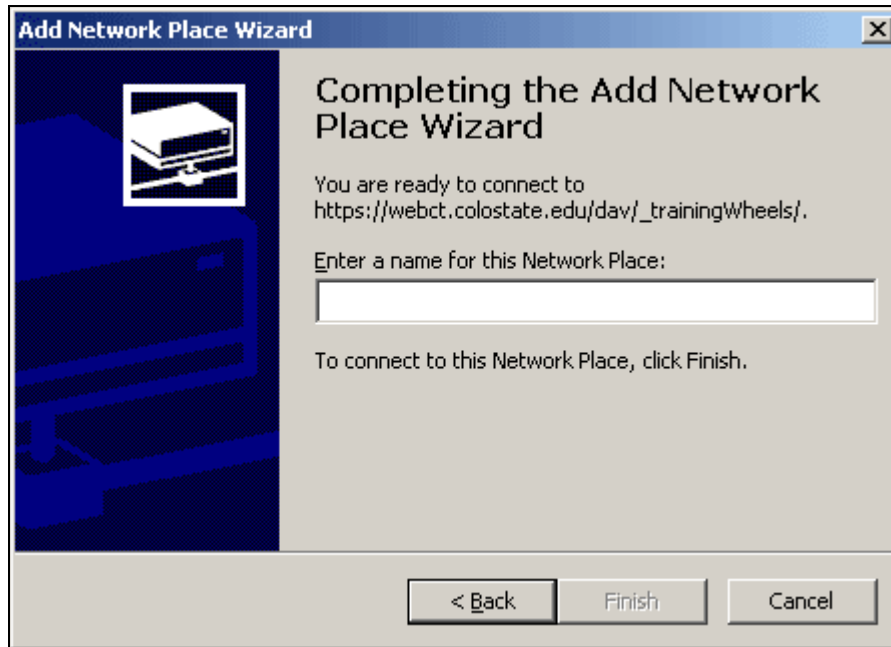
6. Select the **Add Network Places** icon.



7. In the **Type the location of the Network Places** box, paste the WebDAV URL.
8. Click the **Next** button.
9. You will be asked to login with your **eIdentity** and **ePassword**.

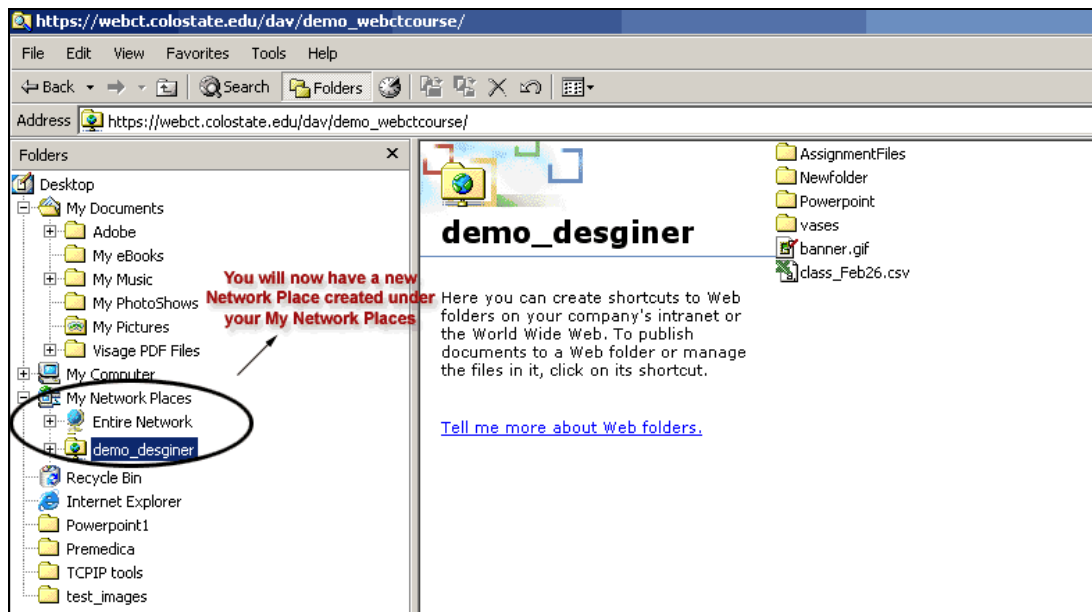


10. Click **OK**. The Completing the Add Network Place Wizard box will appear.
11. Enter a name for your new Network Place.



12. Click **Finish**.

Navigate to your computer's manage files area. You will now have a new Network Place displayed under your My Network Places. You will be asked to login when you access your course files from this link.



## Setting Up WebDAV for Windows 98

Users of Windows 98 will have the same setup procedures as Windows 2000 except the Network Places will be titled Web Folders in 98.

## Setting Up WebDAV for Macintosh Systems

To implement WebDAV on a Macintosh system you will install a program from WebDAV called Goliath. There are two versions of this program:

- ❖ Classic MacOS (The Classic MacOS application requires PowerPC based on Macintosh running MacOS 8.1 or higher). Information on this program can be found at: [http://www.webdav.org/goliath/installs/Goliath\\_1\\_0\\_Installer.hqx](http://www.webdav.org/goliath/installs/Goliath_1_0_Installer.hqx).
- ❖ Disk Copy archive for Mac OS X (This system requires MacOS X version 10.0.4 or greater) Information on this program can be found at: [http://www.webdav.org/goliath/installs/Goliath1\\_0.dmg.gz](http://www.webdav.org/goliath/installs/Goliath1_0.dmg.gz).

**Note:** A detailed help package for Goliath can be found at <http://www.webdav.org/goliath/help0.9>.

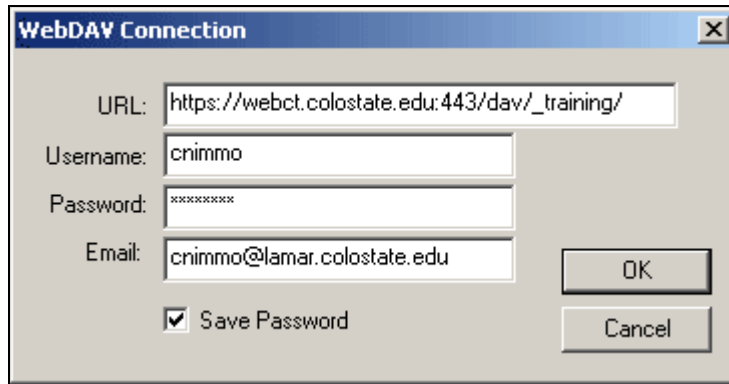
**Important:** Once the Network Place or Webfolders have been set up on your computer, you can use WebDAV with any Microsoft Office programs. **Be aware that if you are using the WebDAV program to modify files, you are modifying files on the server and do not have a backup on your computer.**

## Using WebDAV with Macromedia Dreamweaver

You can also use Dreamweaver to connect to WebDAV (Web-based Distributed Authoring and Versioning) protocol if you have a system that supports that protocol. Two examples of WebDAV servers currently available are Microsoft Internet Information Server (IIS) and Apache Web Server.

To connect to WebDAV within Dreamweaver, do the following:

1. Open Macromedia Dreamweaver.
2. Click **Site > Define Sites**.
3. In the Site Definition dialog box, select **Edit**.
4. In the Category box, select **Remote Info**.
5. In the Access pop-up menu, choose **WebDAV**.
6. Click **Settings**. The WebDAV Connection dialog box appears.



7. In the URL field, enter the complete URL to the directory listed in the WebDAV Info page. This URL includes the protocol, port and course server name.
8. Enter your **eIdentity** and **ePassword** in the Username and Password fields. This information is for server authentication and not related to Dreamweaver.  
**Note:** If you do not remember your eIdentity and ePassword contact ACNS at 491-7653.
9. In the Email field, enter your e-mail address. This is required and is used to identify ownership on the WebDAV server and appears in the Site window for contact purposes.
10. Select the **Save Password** to store your password once you have exited Dreamweaver. When you start a new session the password will be saved.
11. Click **OK**.
12. Choose **Site > Connect** or click the Connect button on the site window tool bar to connect to the remote site. To disconnect, choose **Site > Disconnect** or select the **Disconnect** button.

Once you are connected to WebDAV in Dreamweaver you can use the file sharing features to transfer and modify files in Dreamweaver and your WebCT course. You can change your connection information by following the steps above and entering new information into the WebDAV connection dialog box.