

Budbreak and Harvest dates for 31 grape varieties growing at the Western Colorado Research Center near Grand Junction, CO

Horst Caspari & Amy Montano, Colorado State University, Western Colorado Research Center, 3168 B ½ Road, Grand Junction, CO 81503

The following graphs show the average date (Fig. 1) and range in dates (Fig. 2) for budbreak and harvest for 31 grape varieties growing at the Western Colorado Research Center near Grand Junction, CO. In addition, Fig. 1 also shows the average number of days between budbreak and harvest. To create these figures we used available data for the period 1992 to 2004. Records on budbreak dates were available for seven years between 1995 and 2004. Budbreak observations were made through the budbreak period. A variety was judged to have reached budbreak when at least 80 % of buds reached first exposure of green leaf tissue [BBCH stage 9 (Lorenz et al., 1994); formerly stage 05 (Eichhorn and Lorenz, 1977)]. Records on harvest dates were available for every year from 1992 to 2004, excluding 1998.

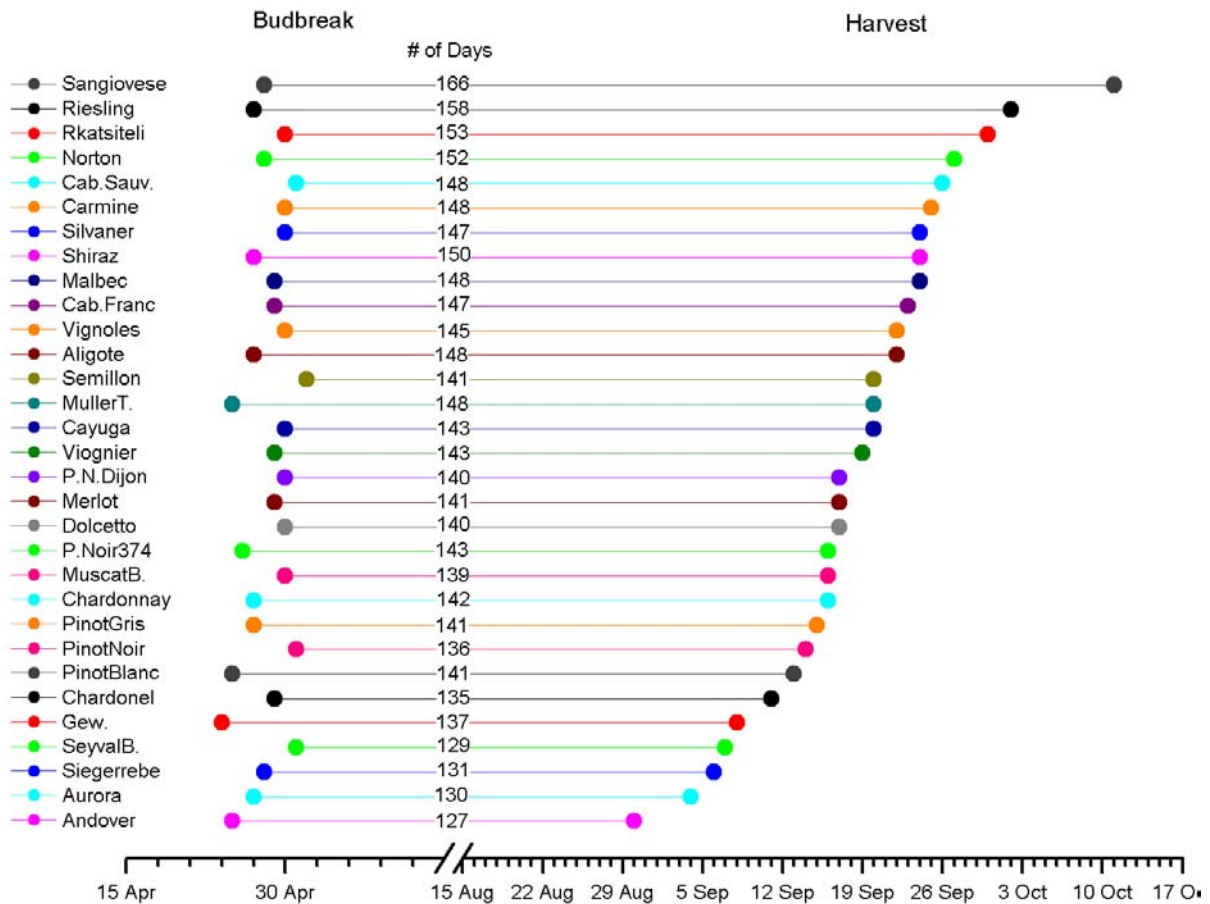


Fig. 1 Mean dates for budbreak and harvest and the average number of days between budbreak and harvest for 31 varieties growing at the Western Colorado Research Center near Grand Junction, CO. Budbreak dates are an average from seven years while harvest dates are an average from twelve years.

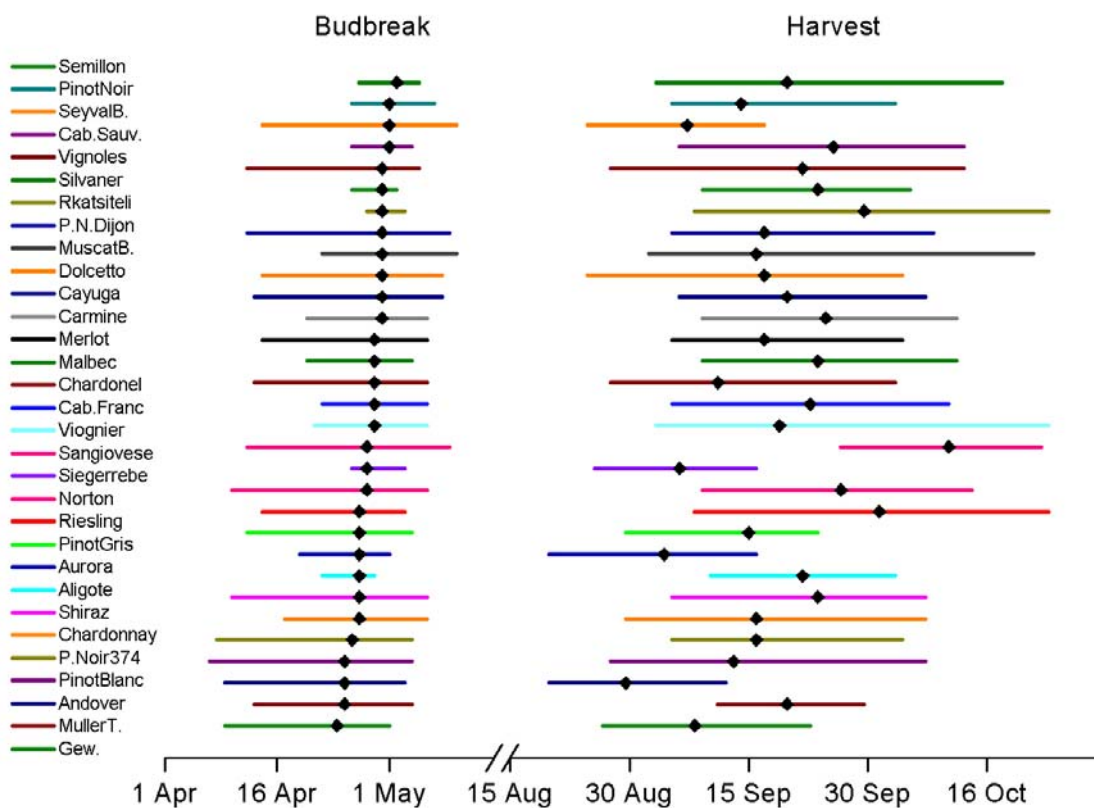


Fig. 2 The range for budbreak and harvest dates for 31 grape varieties growing at the Western Colorado Research Center near Grand Junction, CO. The bar shows the spread of dates from earliest to latest while the diamond denotes the mean date of budbreak or harvest.

Literature cited:

Eichhorn, K.W., Lorenz, D.H. 1977. Phänologische Entwicklung der Rebe. Nachrichtenblatt d. deutschen Pflanzenschutzdienstes, Braunschweig 21:119-120.

Lorenz, D.H., Eichhorn, K.W., Bleiholder, H., Klose, R., Meier, U., and Weber, E. 1994. Phänologische Entwicklungsstadien der Rebe (*Vitis vinifera* L. ssp. *vinifera*). – Codierung und Beschreibung nach der erweiterten BBCH-Skala. *Vitic. Enol. Sci.* 49(2):66-70.