

---

# 2007 Grower Survey

**Horst Caspari**  
**Colorado State University**  
**Western Colorado Research Center**  
**Grand Junction, CO 81503**  
**Ph: (970) 434-3264**

# Survey summary

Survey forms sent	167
Survey forms returned	86
Commercial growers	86
Mail undelivered	0
Not a commercial grower	0
Rate of return	51 %

# Non-respondents: established growers

---

46 growers who provided data in previous surveys did not respond to the 2007 survey

- 223 total acres (~26 % of CO total)
- 217 producing acres

Another ~20 growers have not replied to any of the surveys since 2000.

# Definition

---

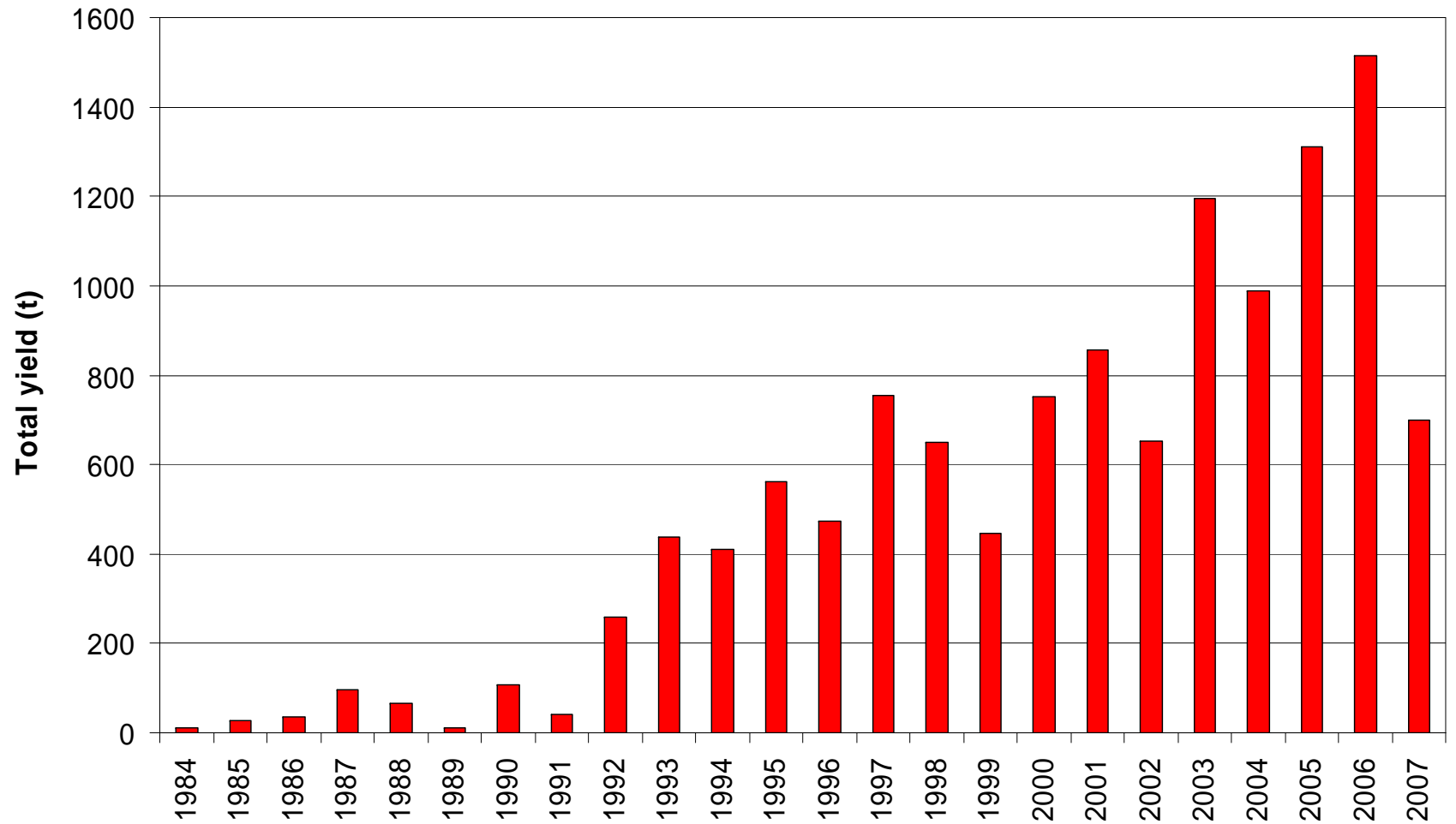
“Producing area”

- vineyards that were planted prior to 2006

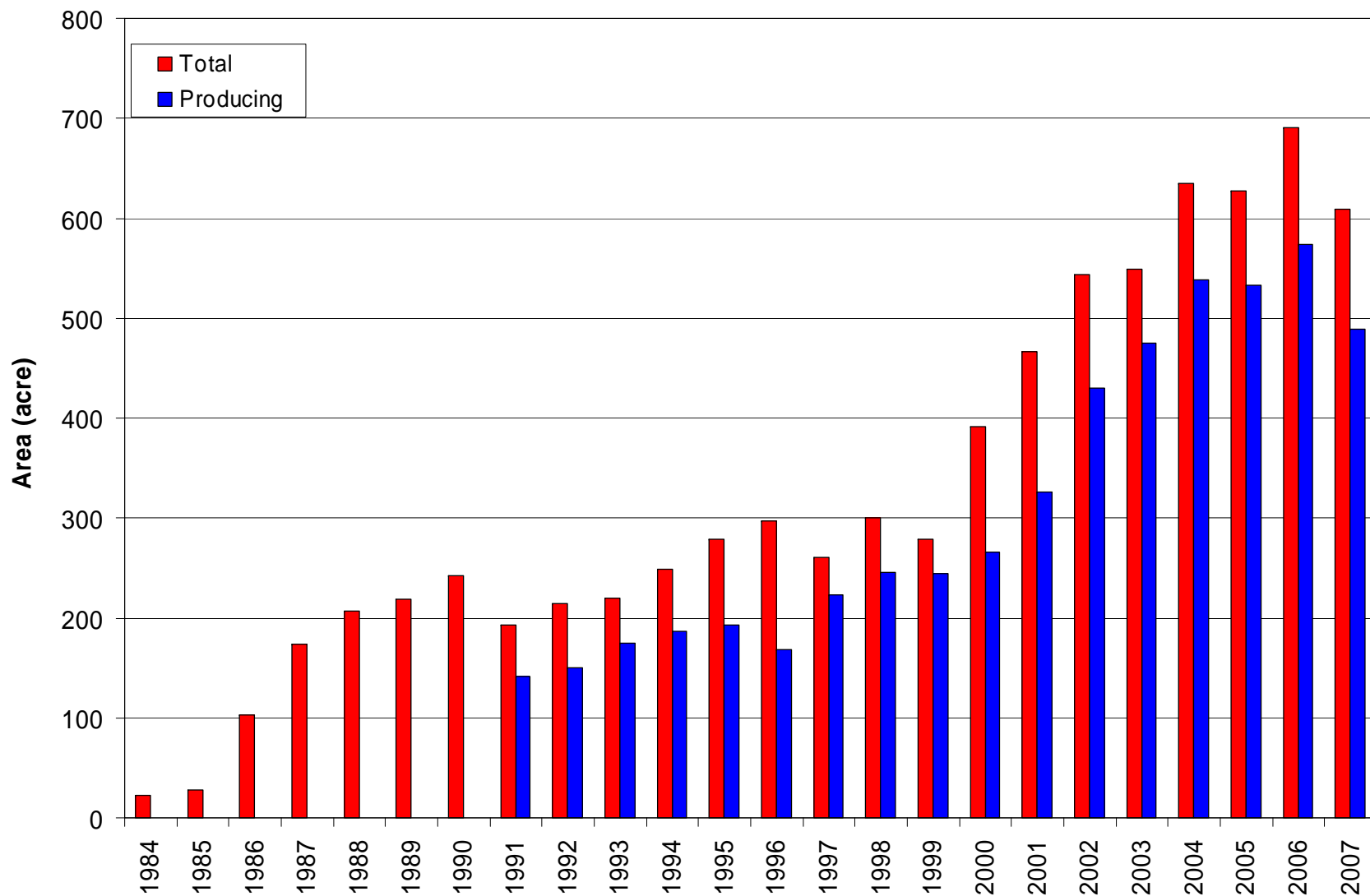
# 2007 Survey results

Total vineyard area (acre)	609
Wineries	195 (32 %)
Contract growers	414 (68 %)
Producing vineyard area (acre)	489
Wineries	183 (38 %)
Contract growers	305 (62 %)
Average vineyard size (acre)	7.1
Total production (t)	700
Average yield (t/acre)	1.43
Average grape price (\$/t)	1,328
Average picking costs (\$/t)	194
Gross return (\$/acre)	2,819

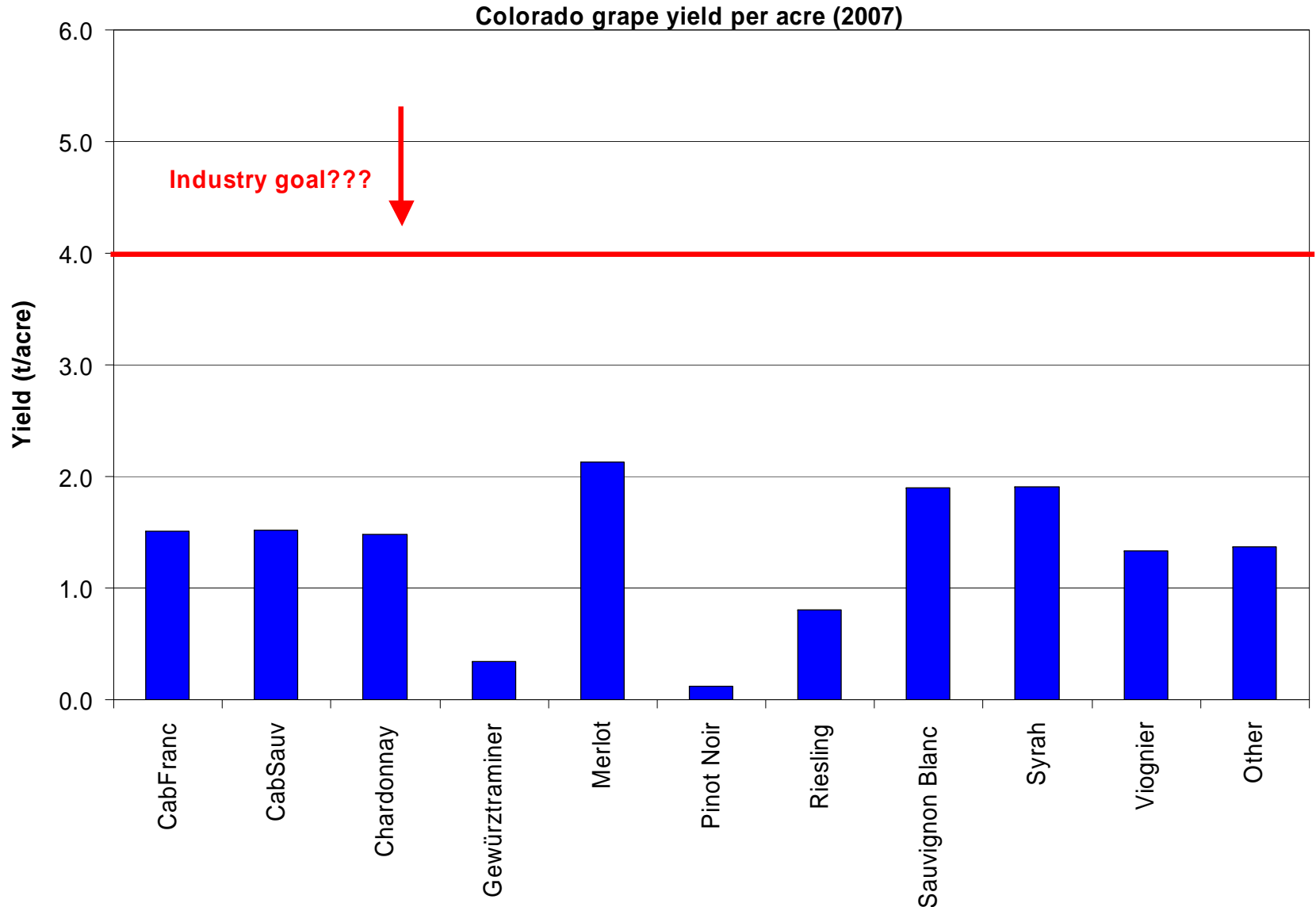
# Colorado grape production by year



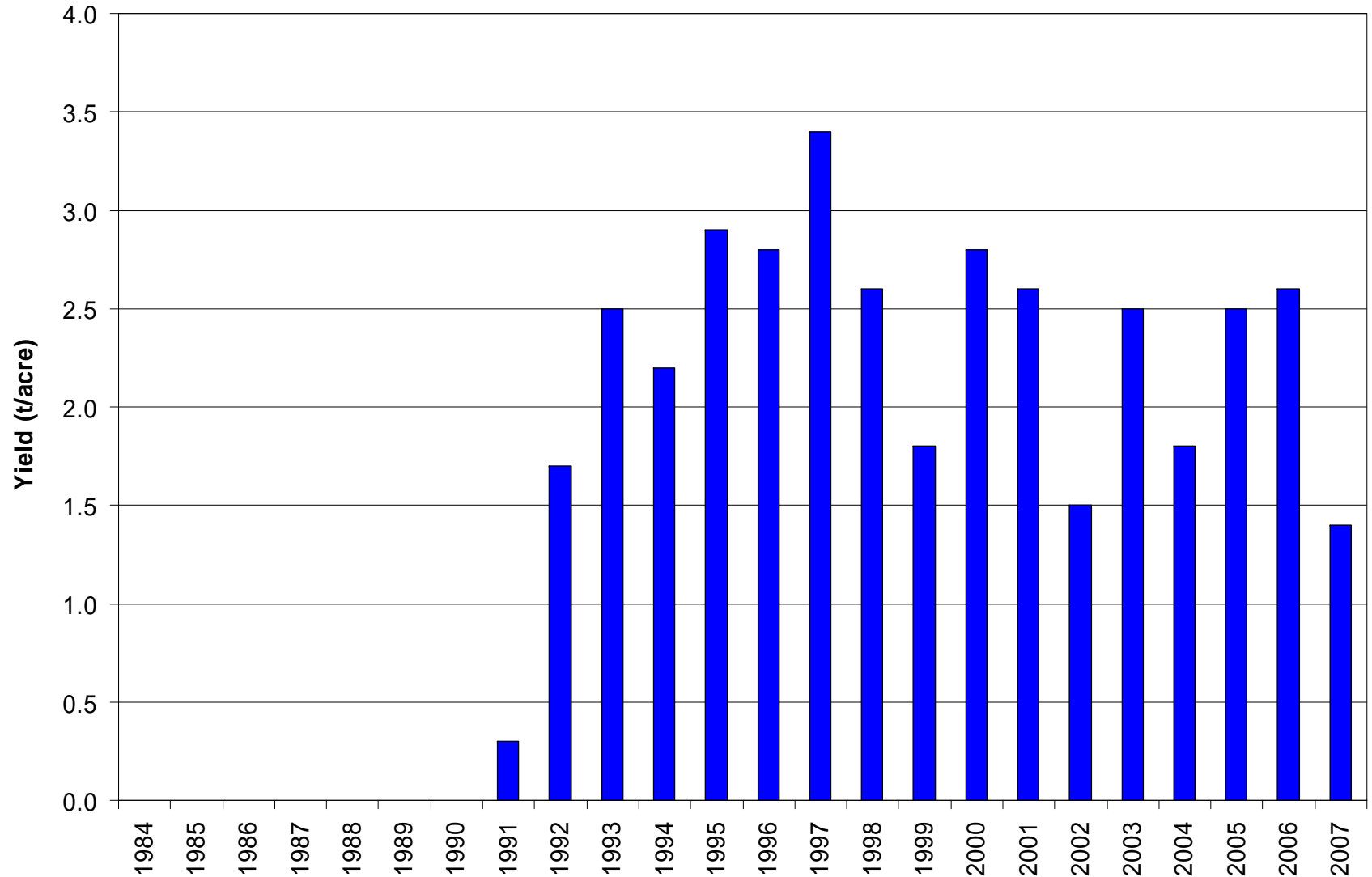
# Colorado grape growing area by year



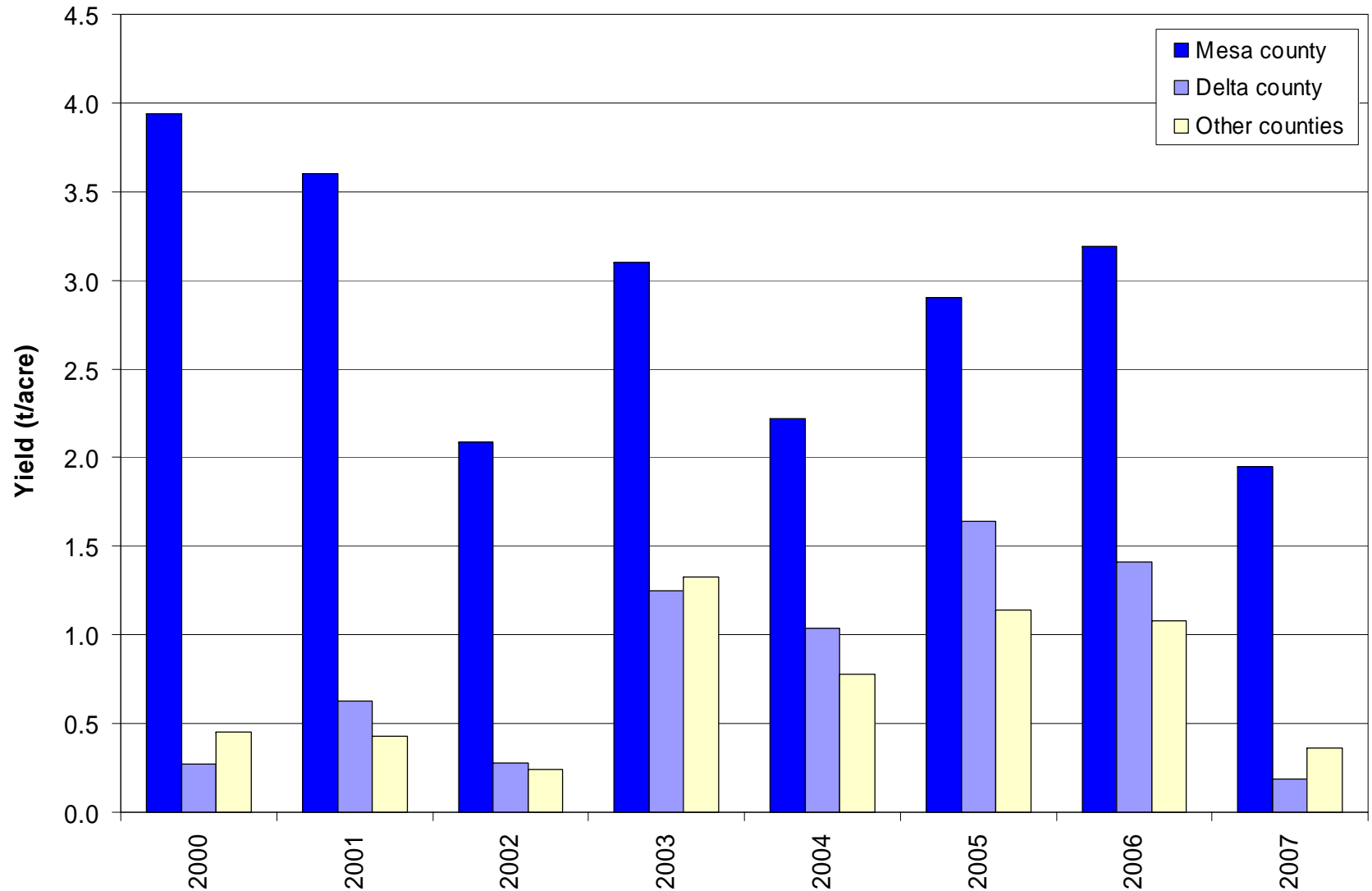
# Colorado grape yield per acre by variety



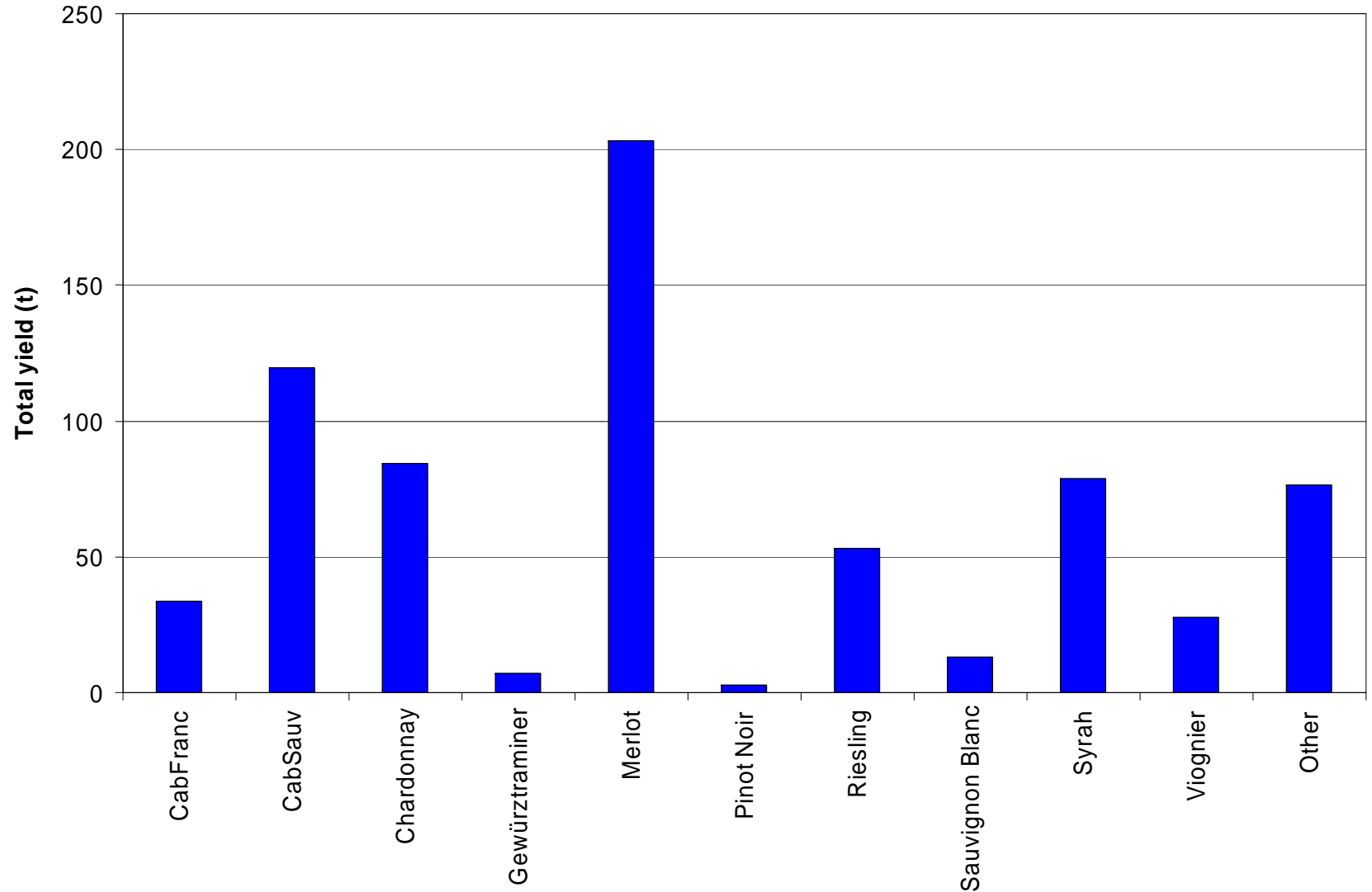
# Colorado grape yield per acre by year



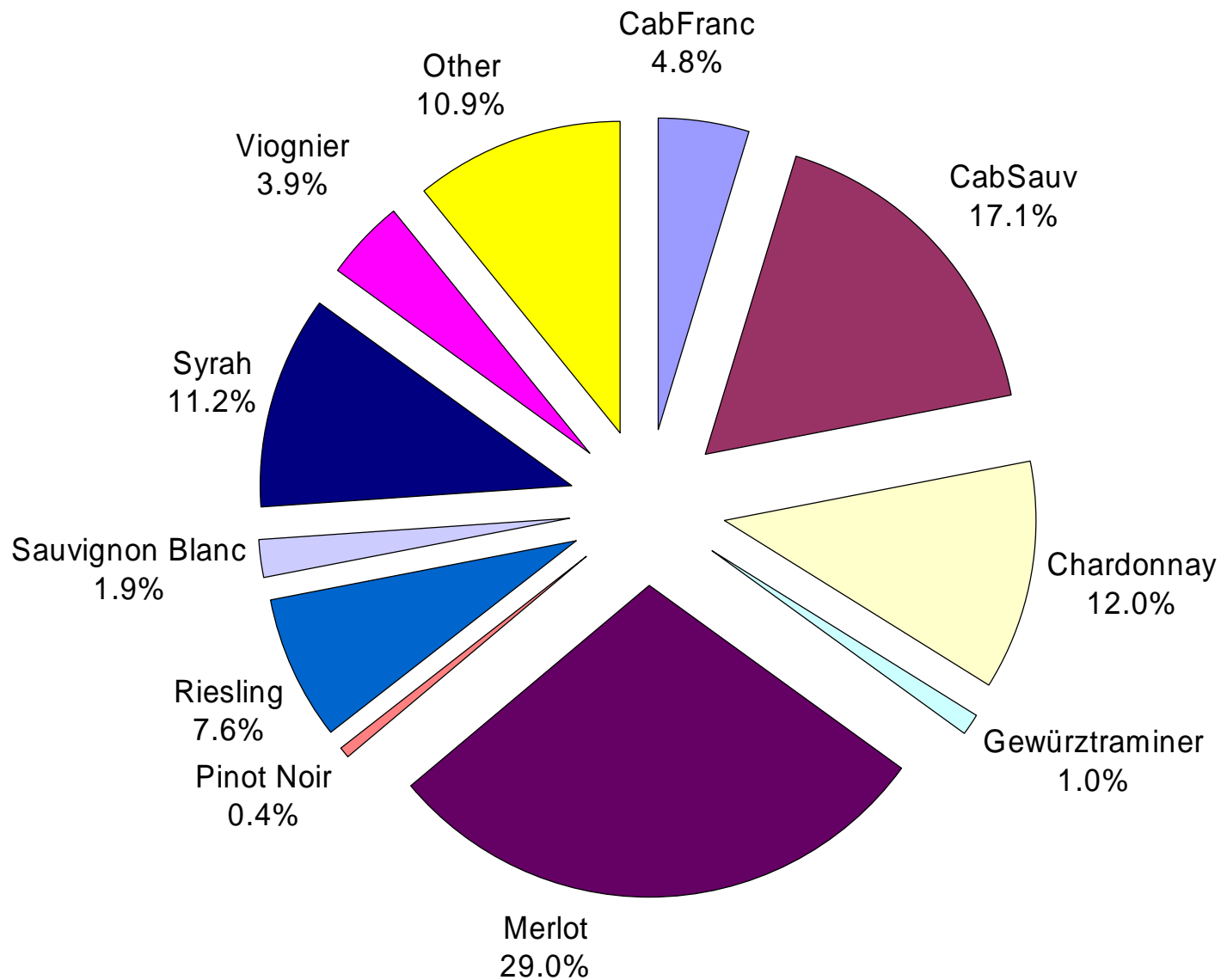
# Colorado grape yield per acre by county



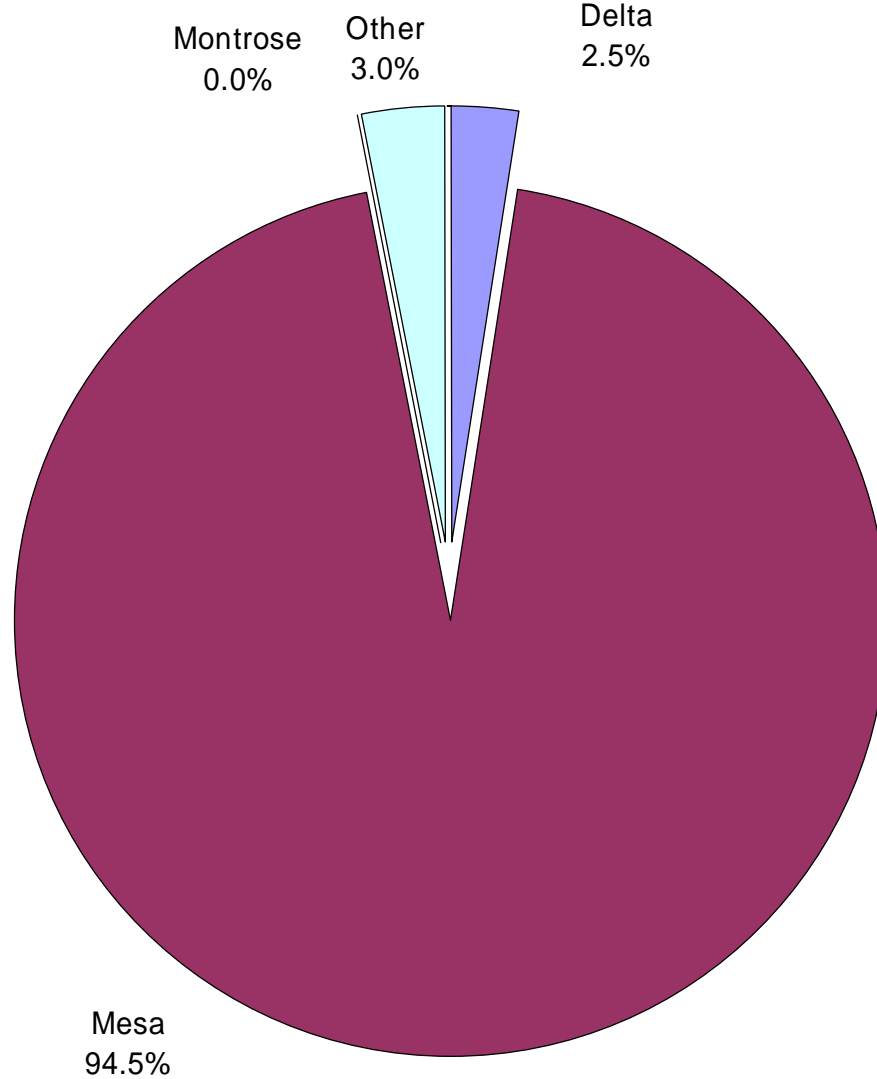
# Colorado grape production by variety



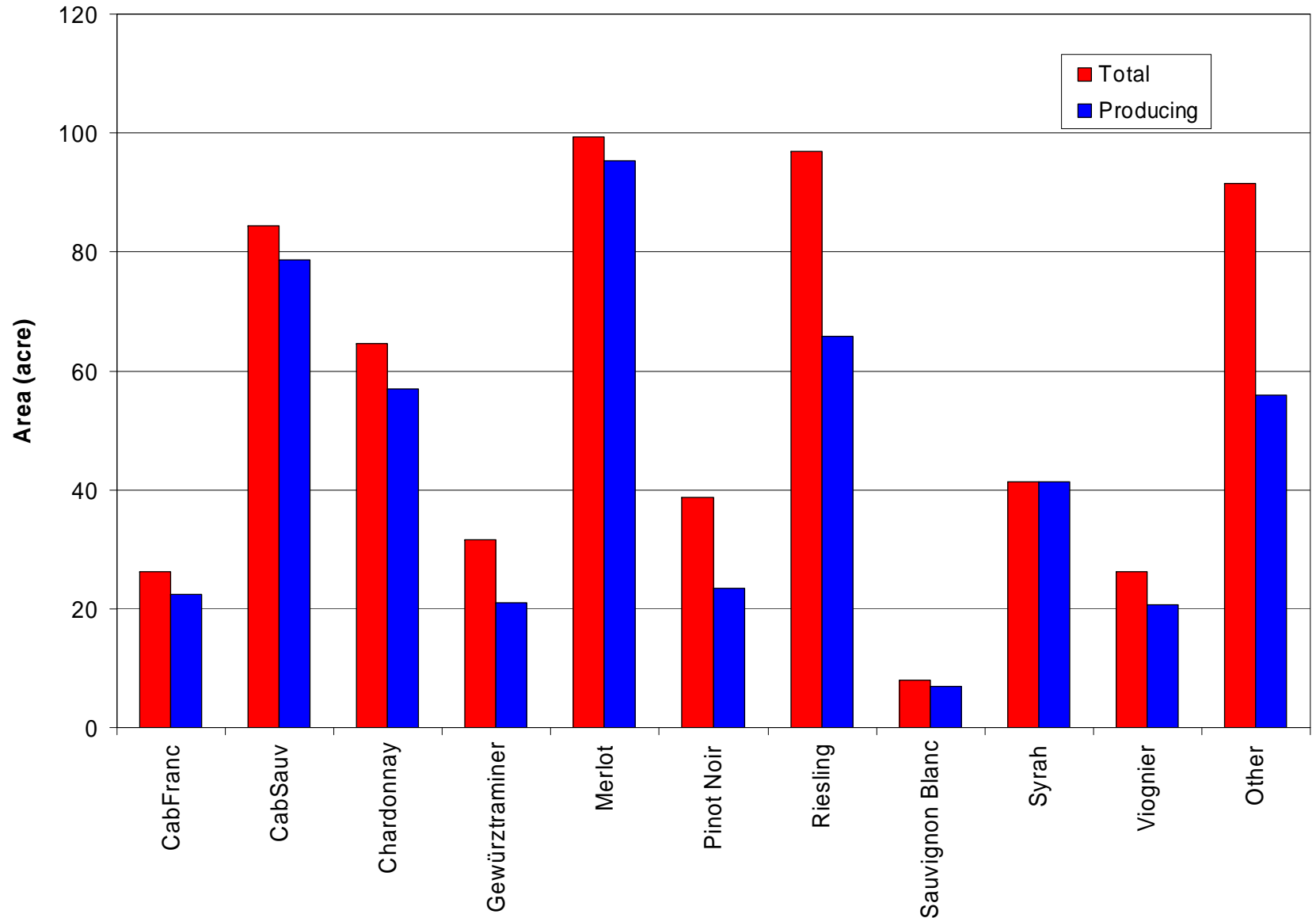
# Colorado grape production by variety



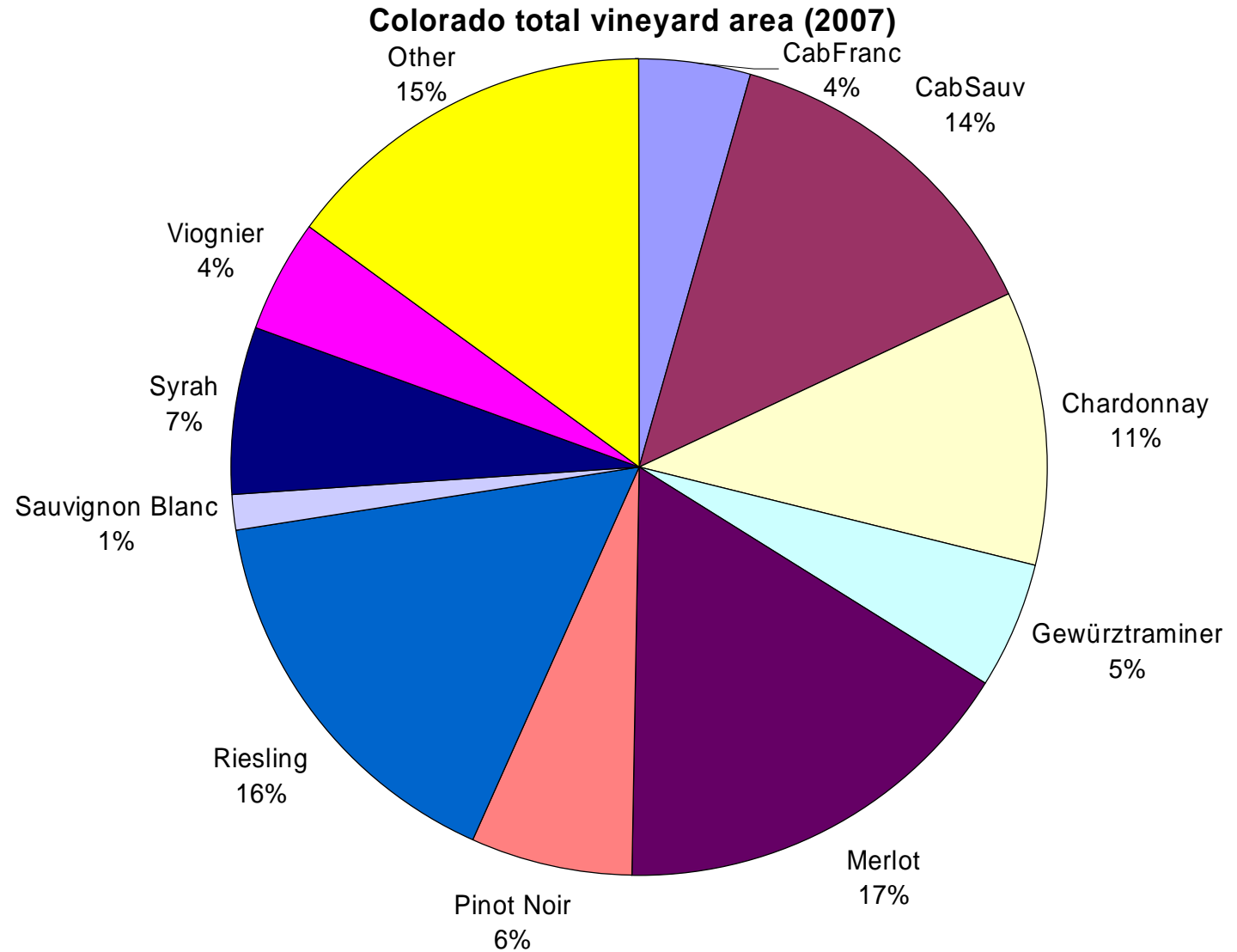
# Colorado grape production by county



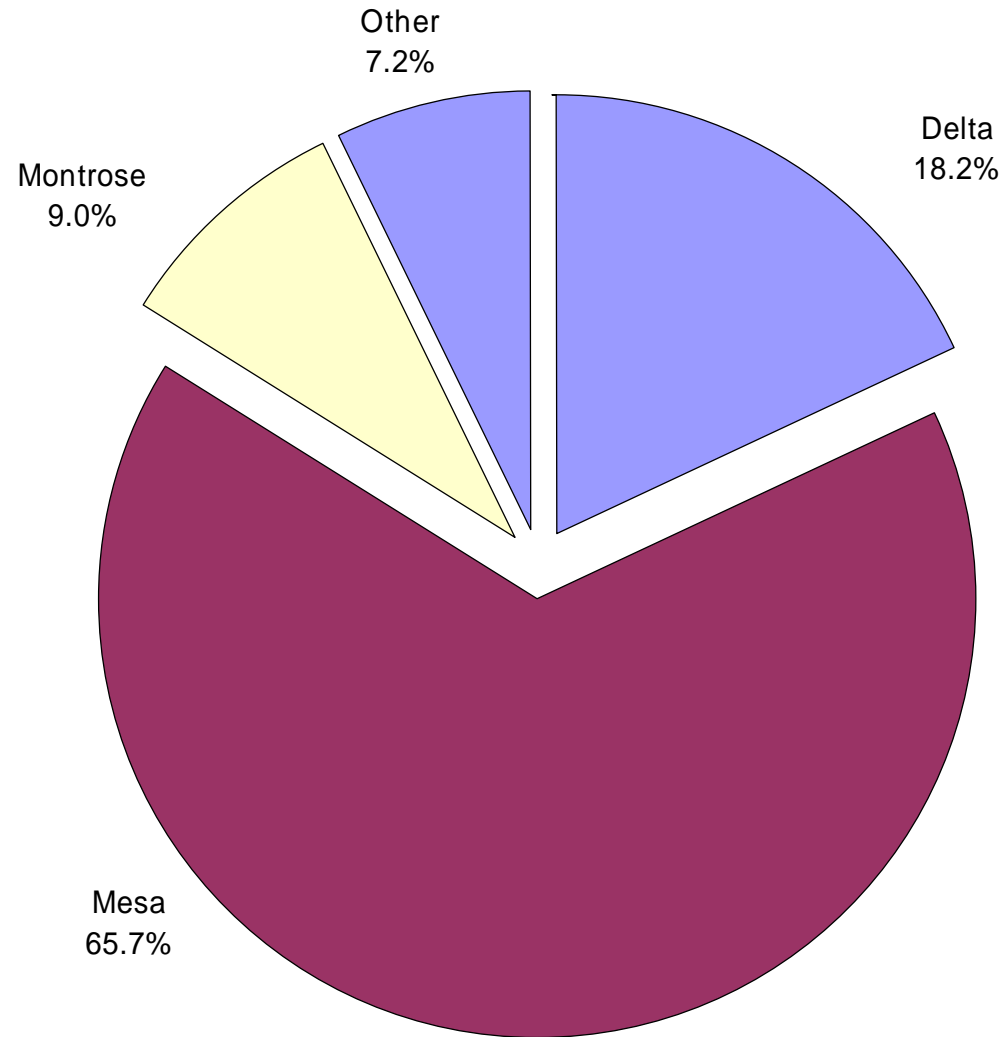
# Colorado grape growing area by variety



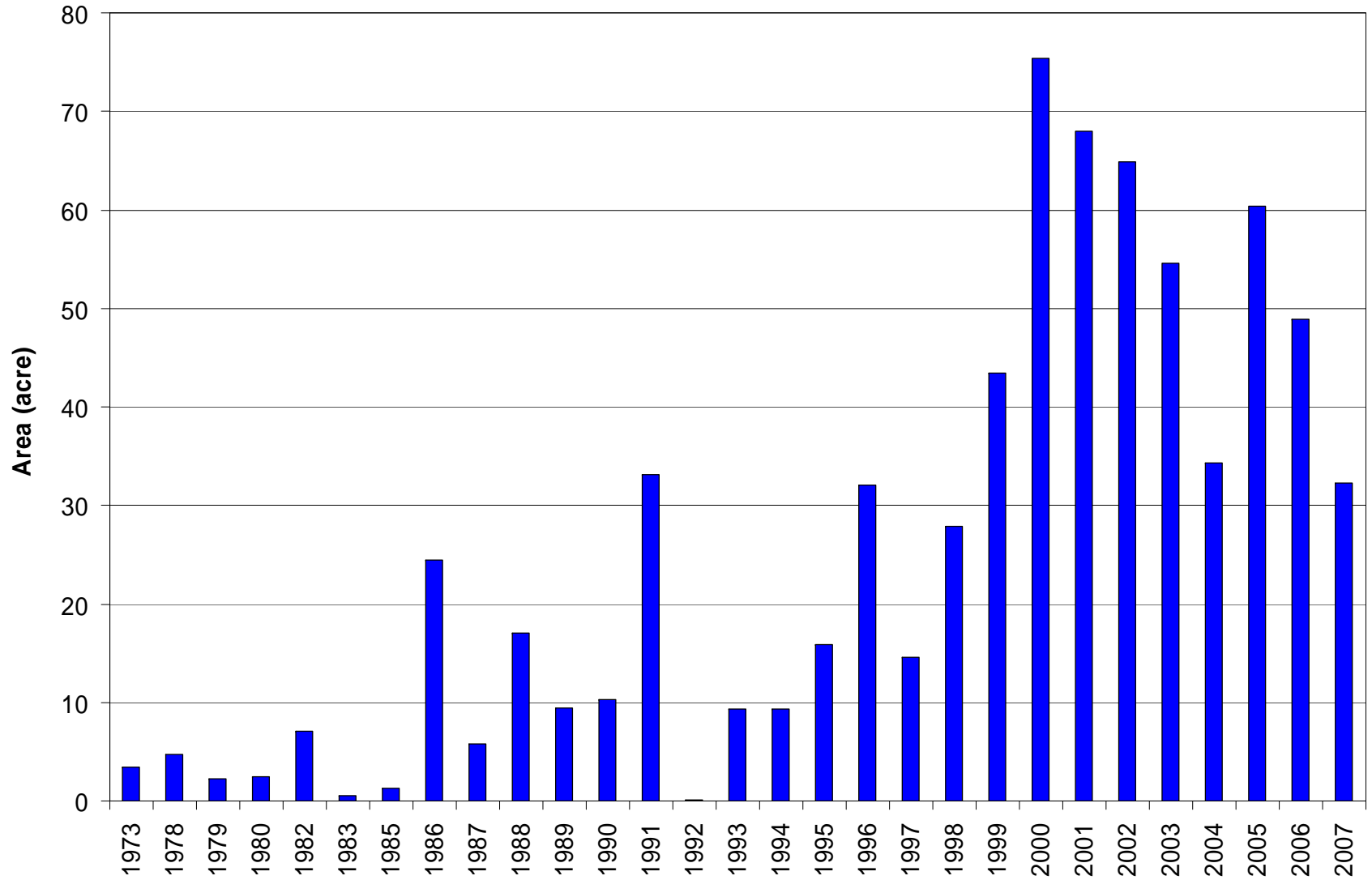
# Colorado grape growing area by variety



# Colorado total vineyard area by county

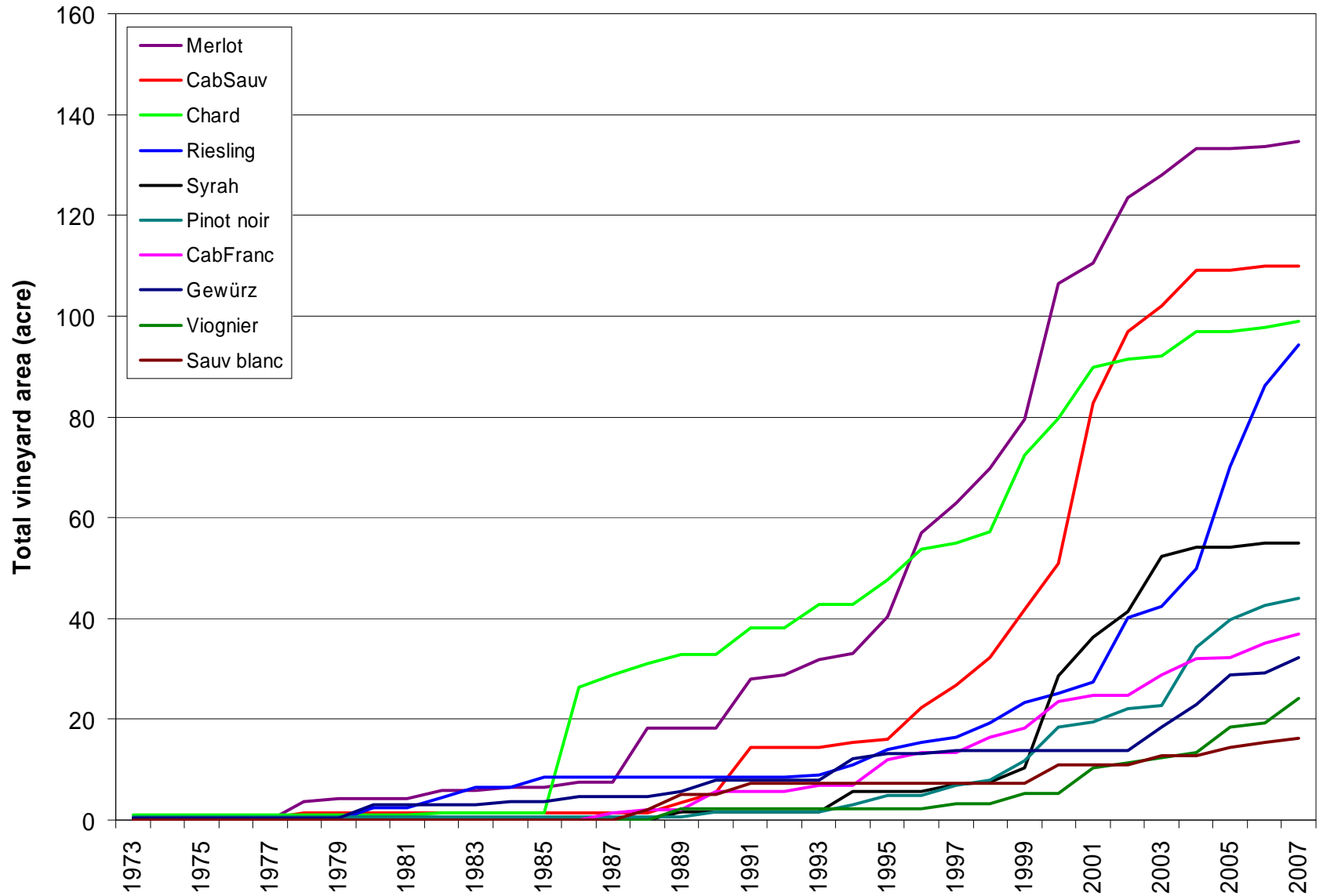


# Colorado vineyards by planting year



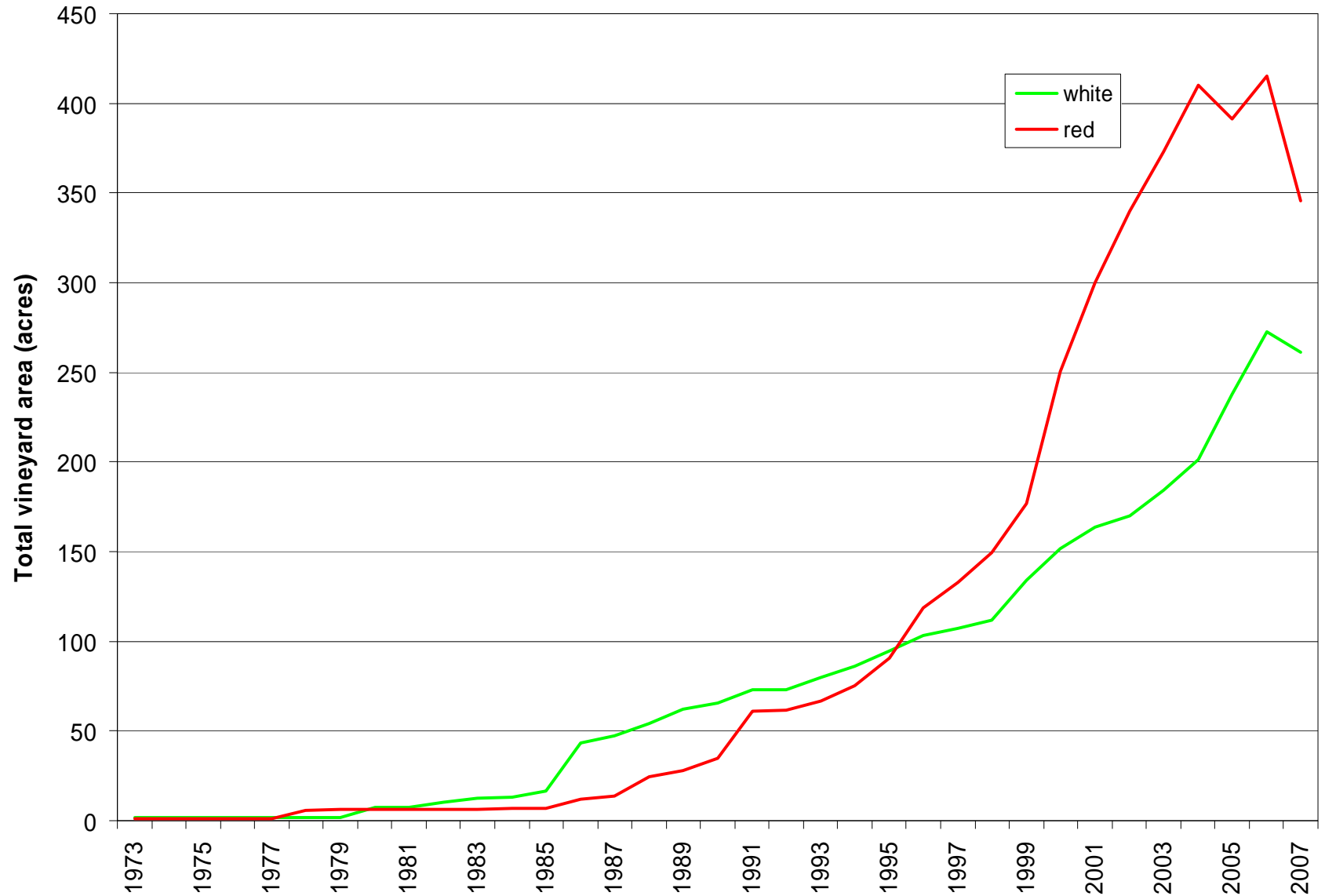
Best guess; based on all surveys since 2000

# Colorado vineyard area, top 10 varieties

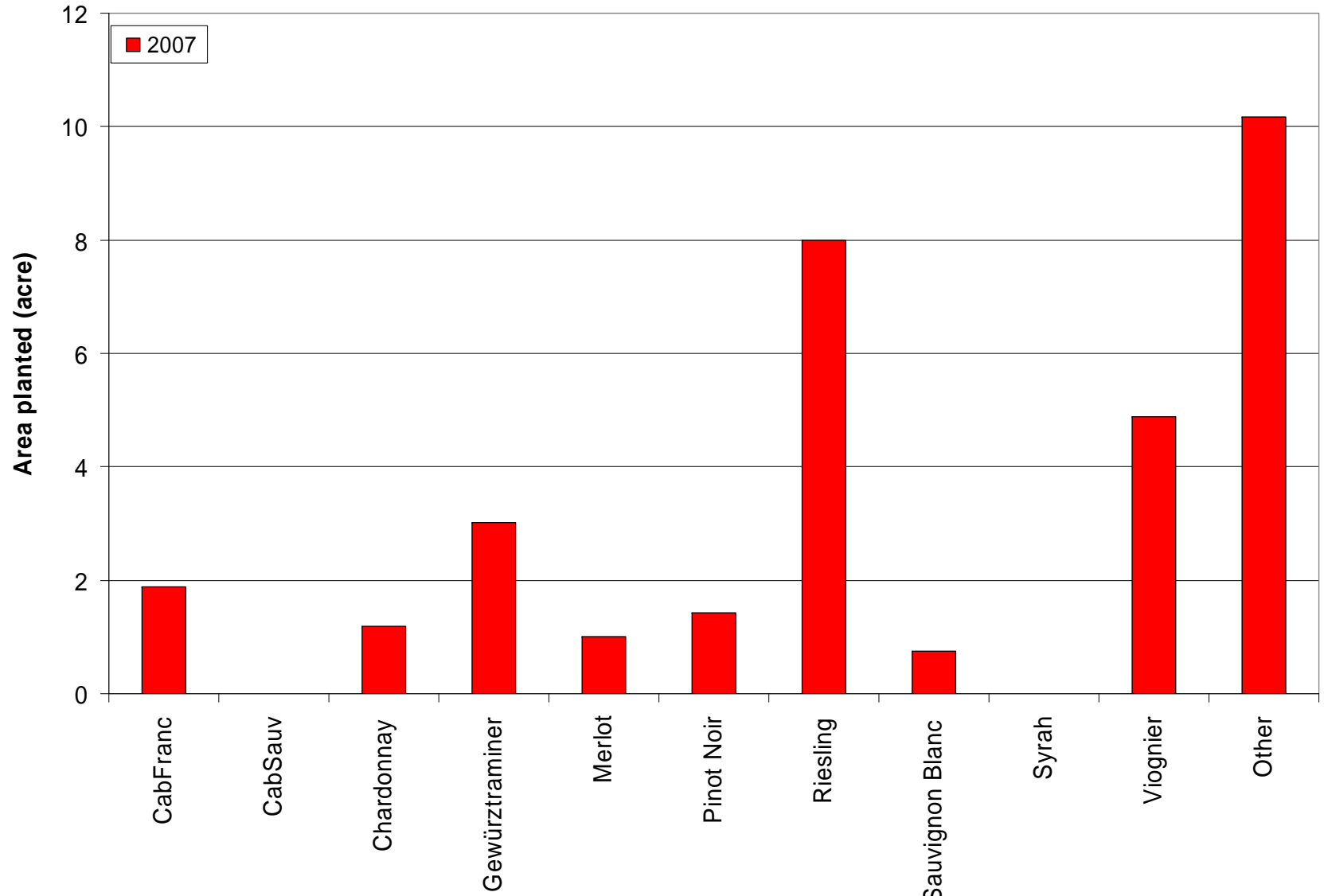


Best guess; based on all surveys since 2000

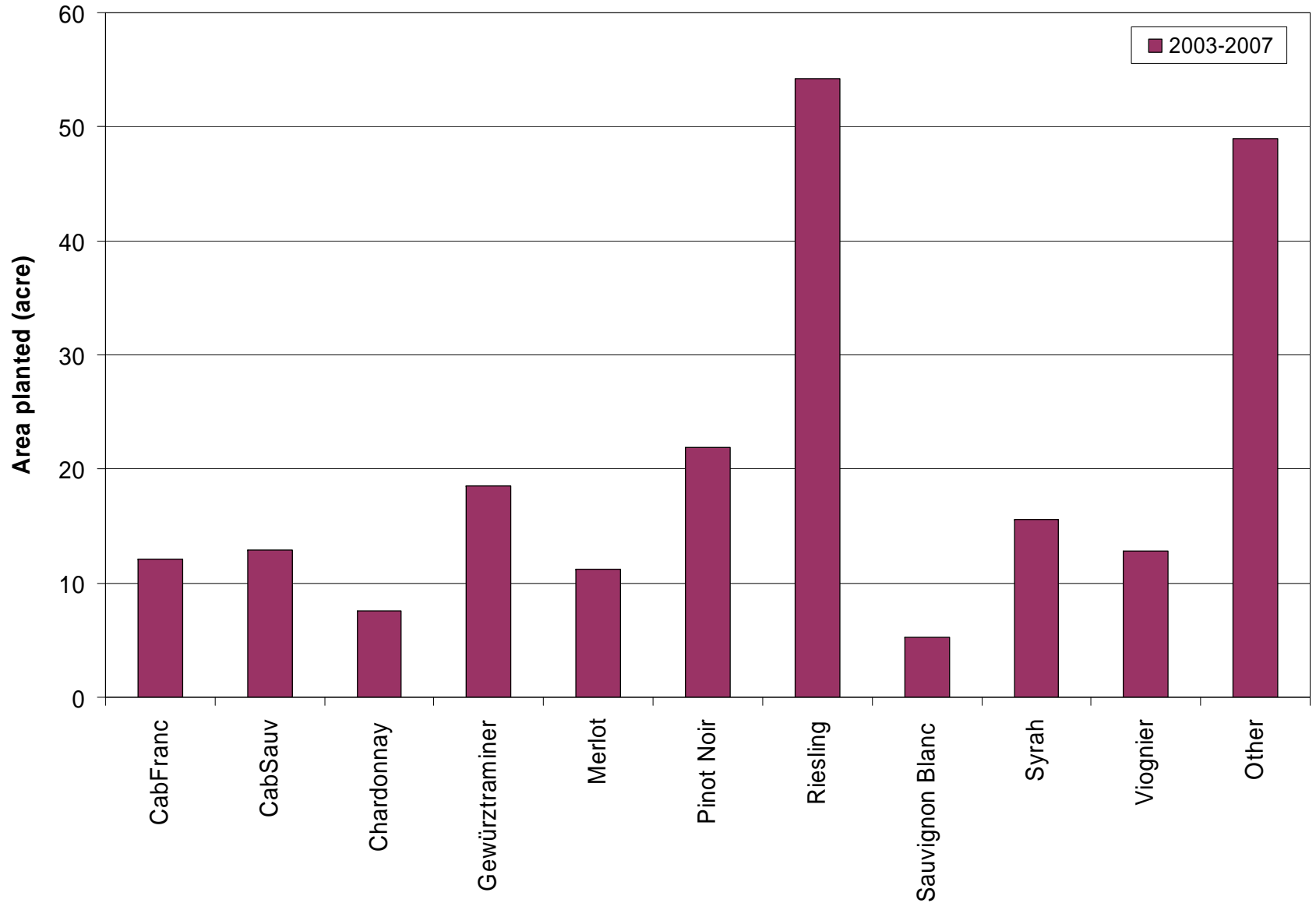
# Colorado wine varieties – red & white



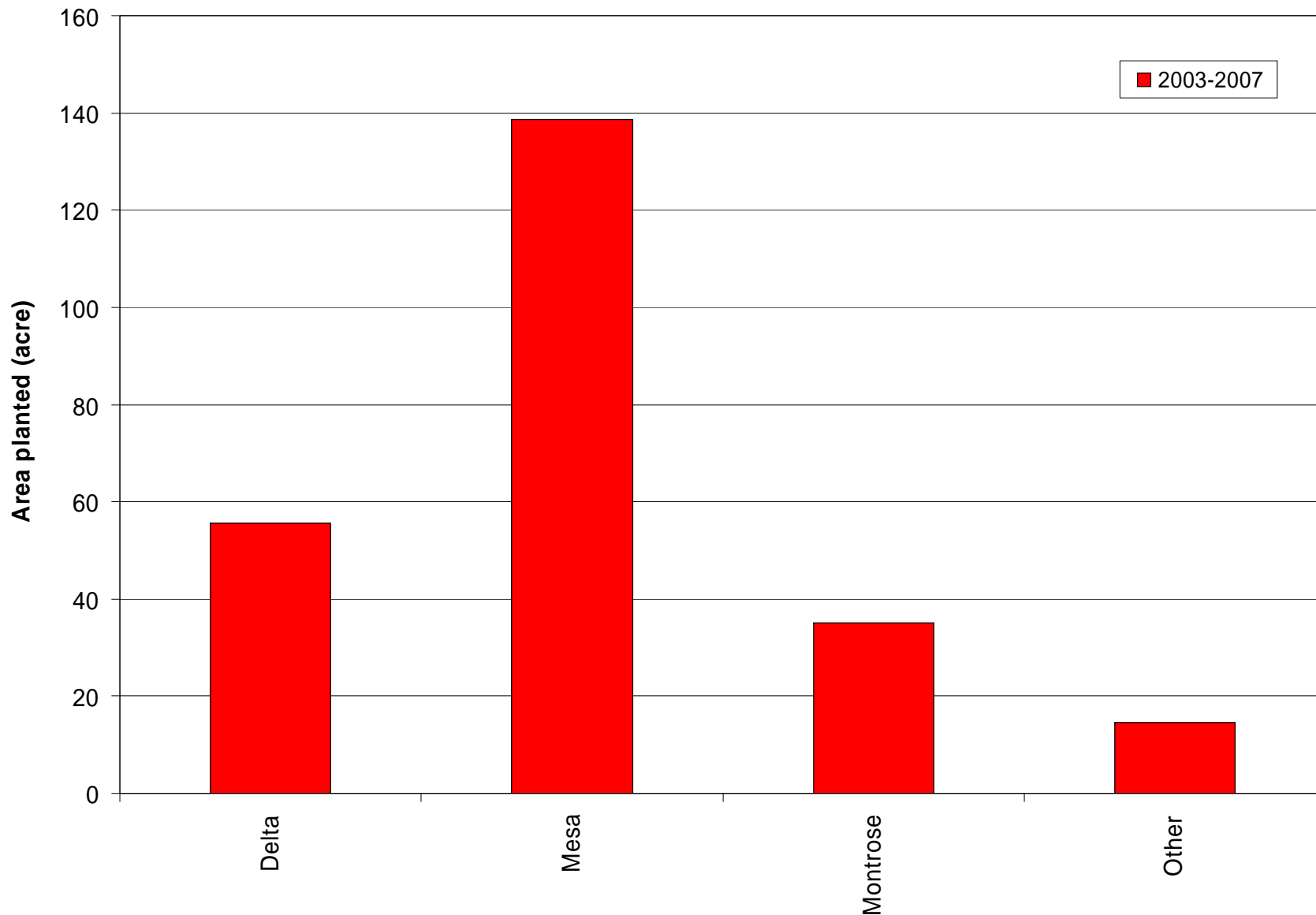
# What has been planted?



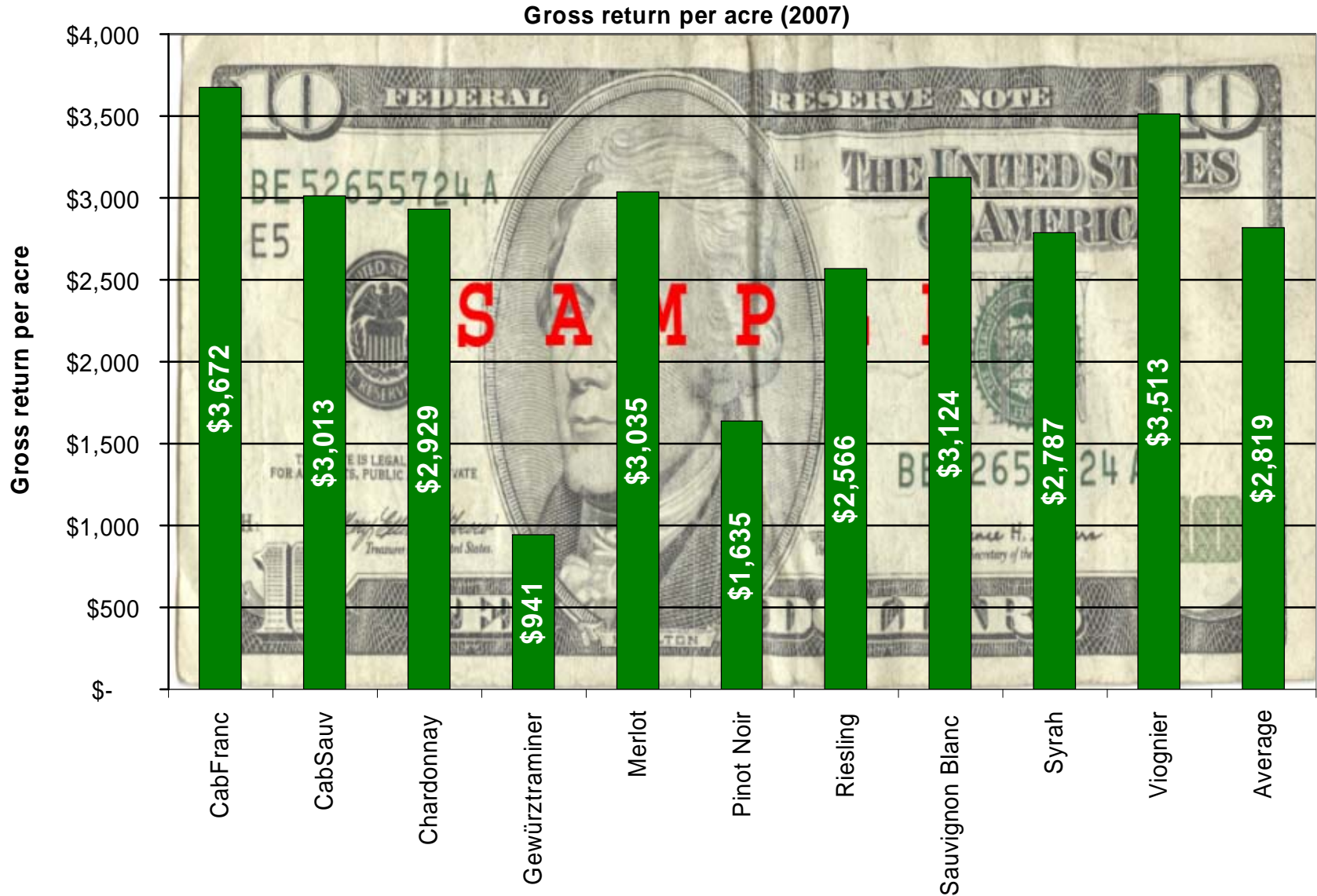
# Total plantings 2003 - 2007



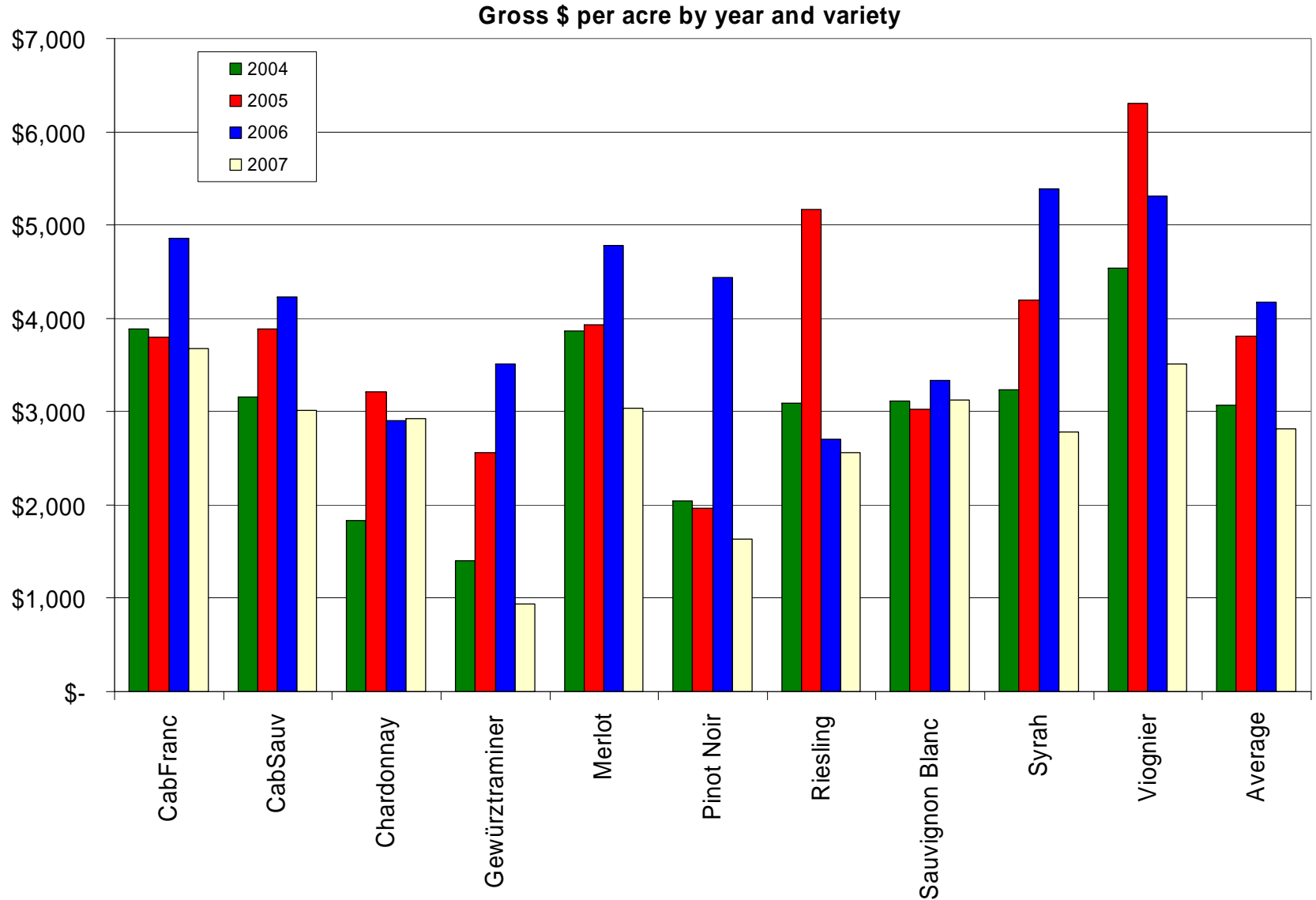
# New vineyard area by county



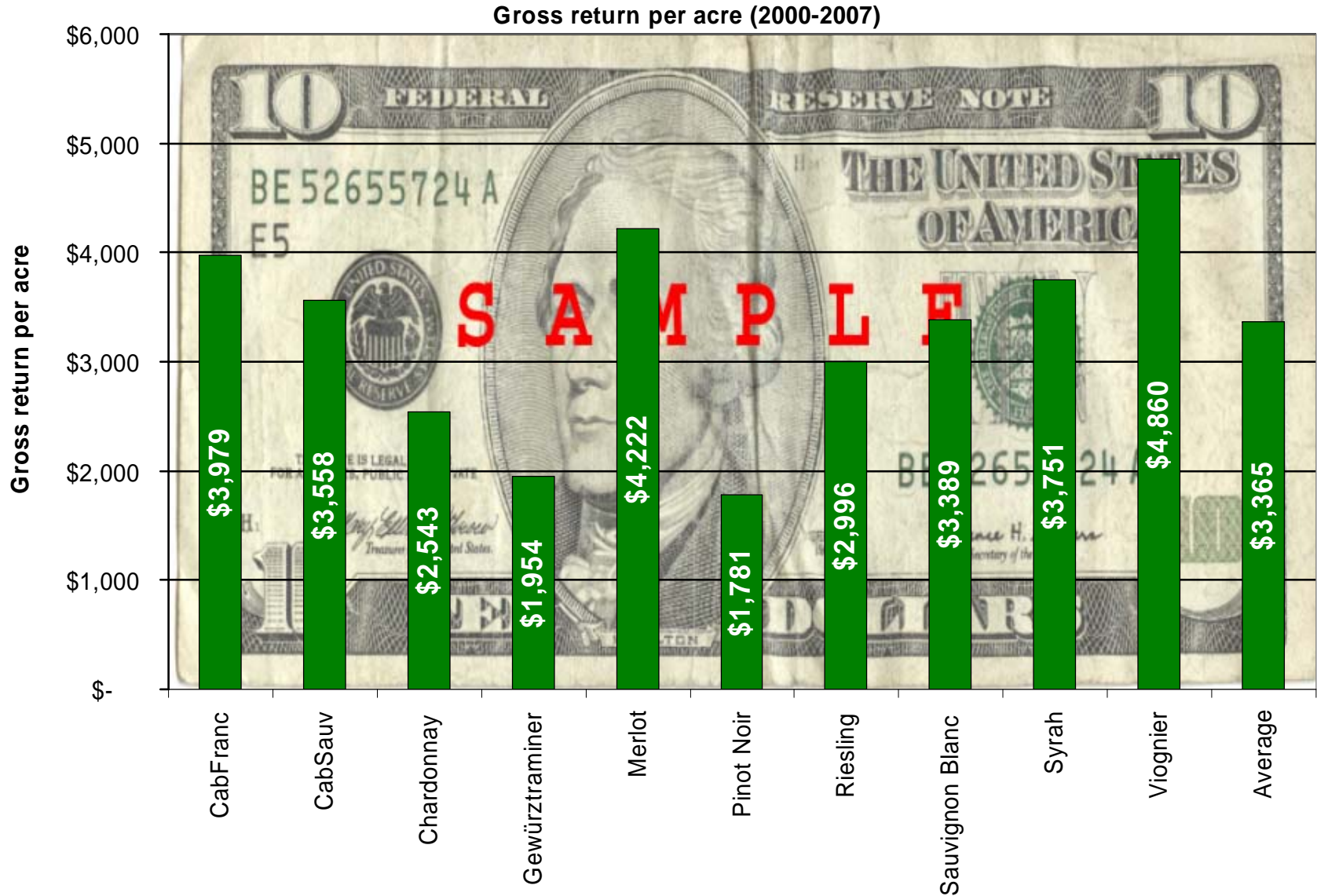
# Gross return per acre, 2007



# Gross return per acre, 2004-2007



# Average gross return per acre, 2000-2007



# “Guesstimate” of Colorado grape growing area

Total vineyard area (acre)	850-900
Wineries	40 %
Growers	60 %
Producing vineyard area (acre)	750
Wineries	40 %
Growers	60 %
Average vineyard size (acre)	7.2

Note: This “guesstimate” was prepared from data provided in the 1999 to 2007 surveys. A number of growers never responded to either of those surveys. Taking into account non-respondents, I estimate a total Colorado vineyard area in 2007 of 850-900 acres.

# Acknowledgements

---

Thanks to

- All growers who responded to the survey
- CWIDB for funding the survey
- Christa Hawk & Amy Montano, CSU for help with data entry, analysis, and presentation