

# 2004 Grower Survey

**Horst Caspari**  
**Colorado State University**  
**Western Colorado Research Center**  
**Grand Junction, CO 81503**  
**Ph: (970) 434-3264**

# Survey summary

Survey forms sent	160
Survey forms returned	106
Commercial growers	103
Mail undelivered	0
Not a commercial grower	3
Rate of return	66 %

# Definition

---

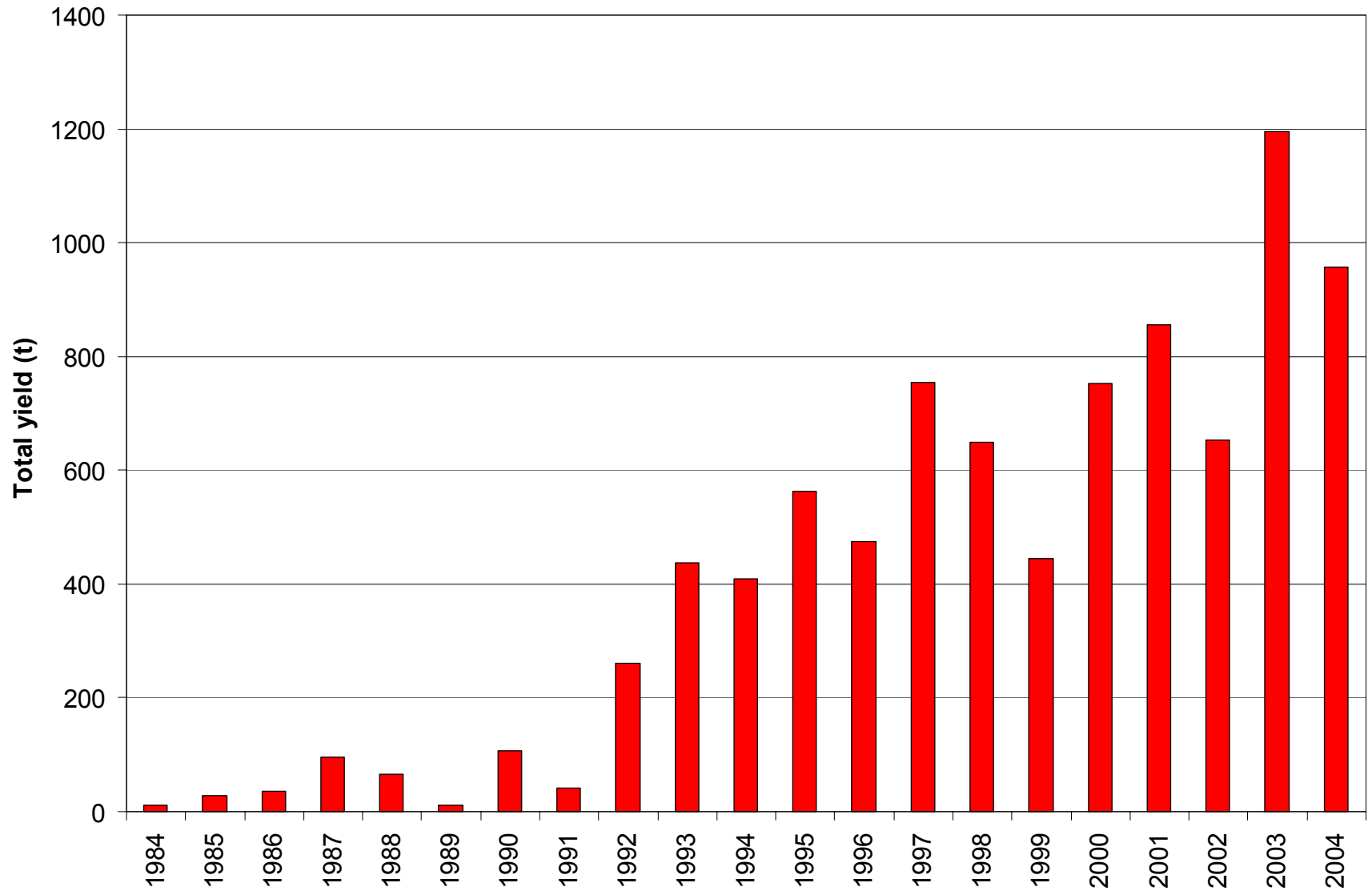
“Producing area”

- vineyards that were planted prior to 2003

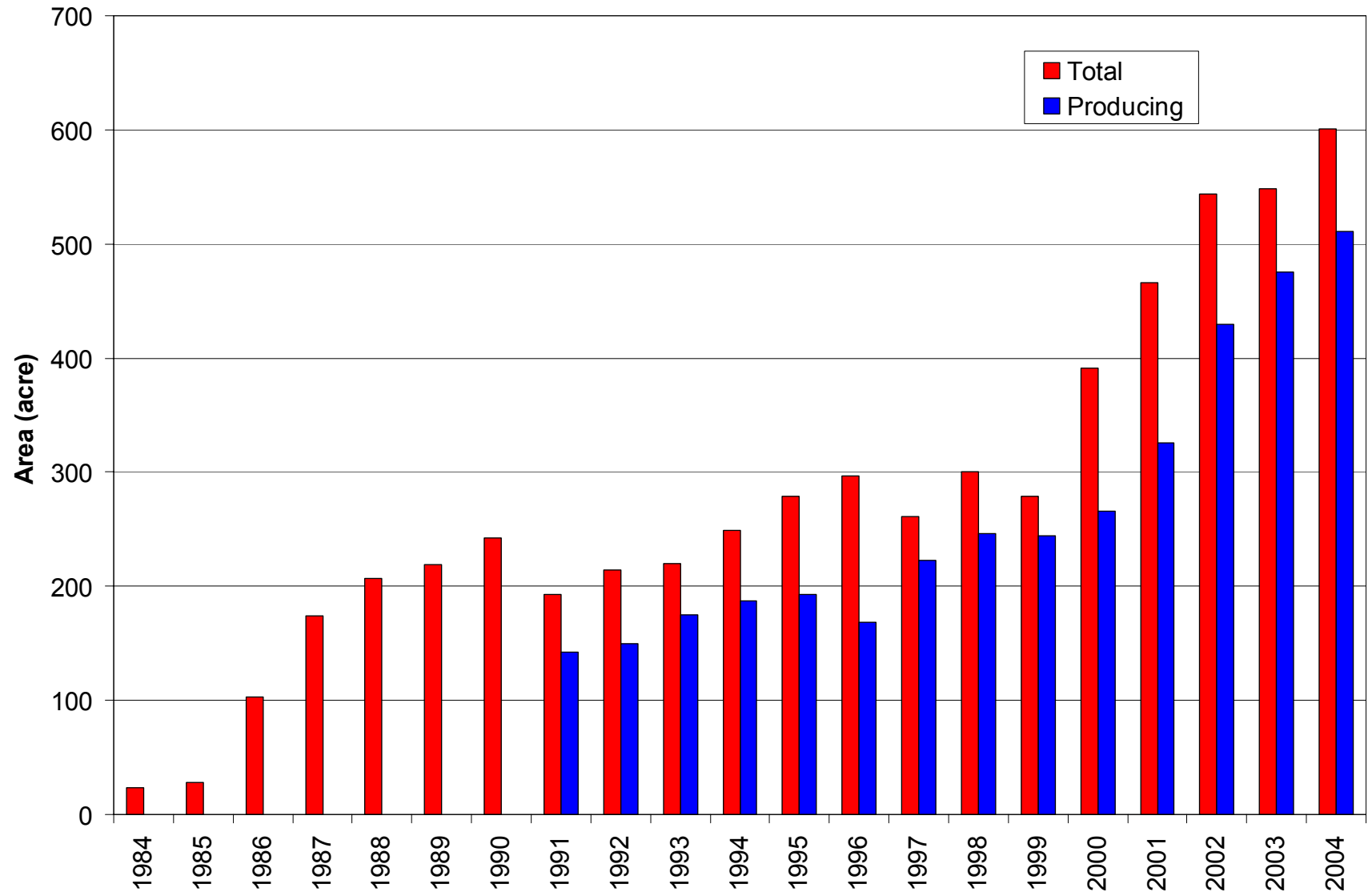
# Survey results

Total vineyard area (acre)	612
Wineries	306 (50 %)
Contract growers	306 (50 %)
Producing vineyard area (acre)	517
Wineries	268 (52 %)
Contract growers	249 (48 %)
Average vineyard size (acre)	6.4
Total production (t)	964
Average yield (t/acre)	1.86
Average grape price (\$/t)	1300
Average picking costs (\$/t)	188
Gross return (\$/acre)	3072

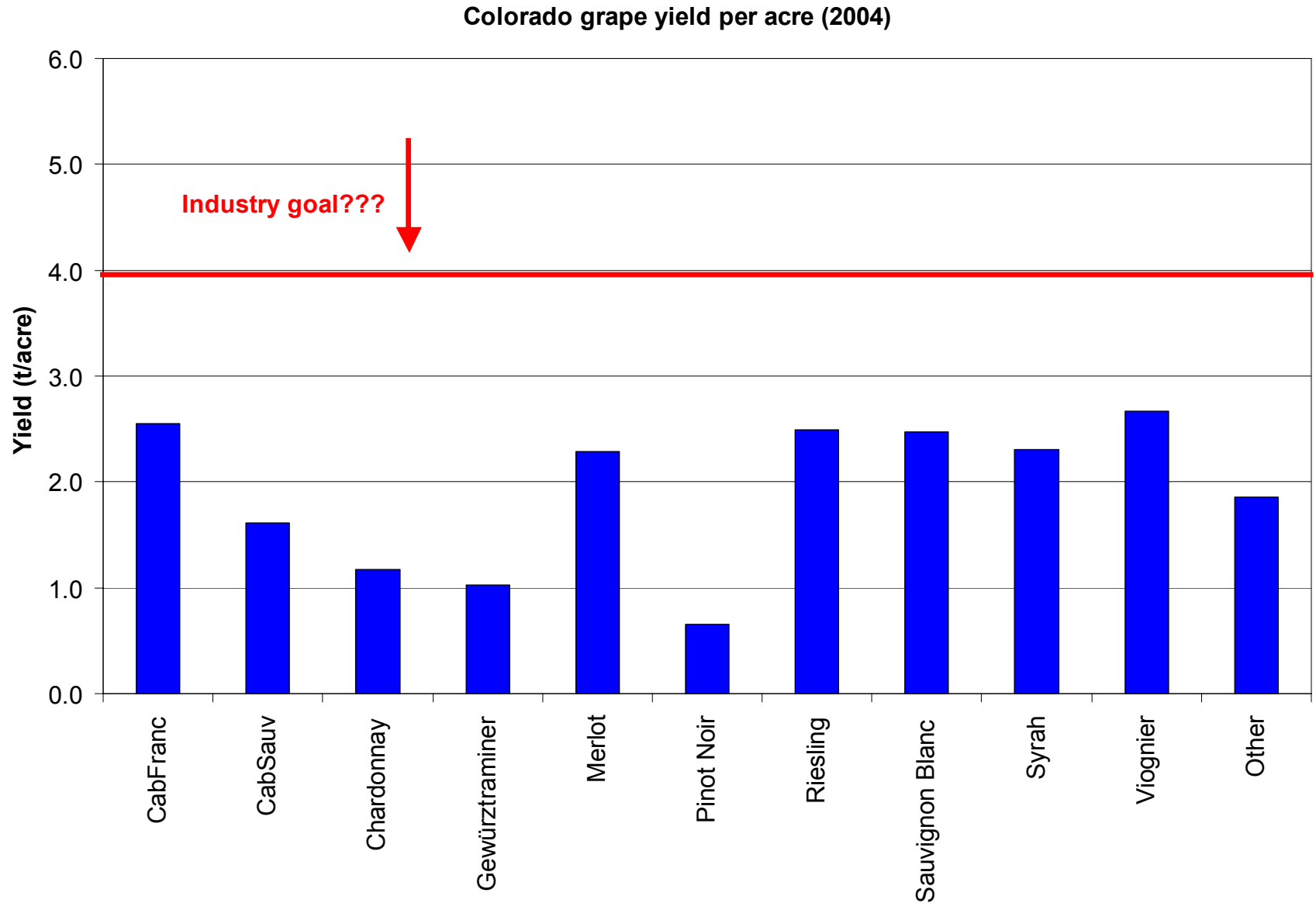
# Colorado grape production by year



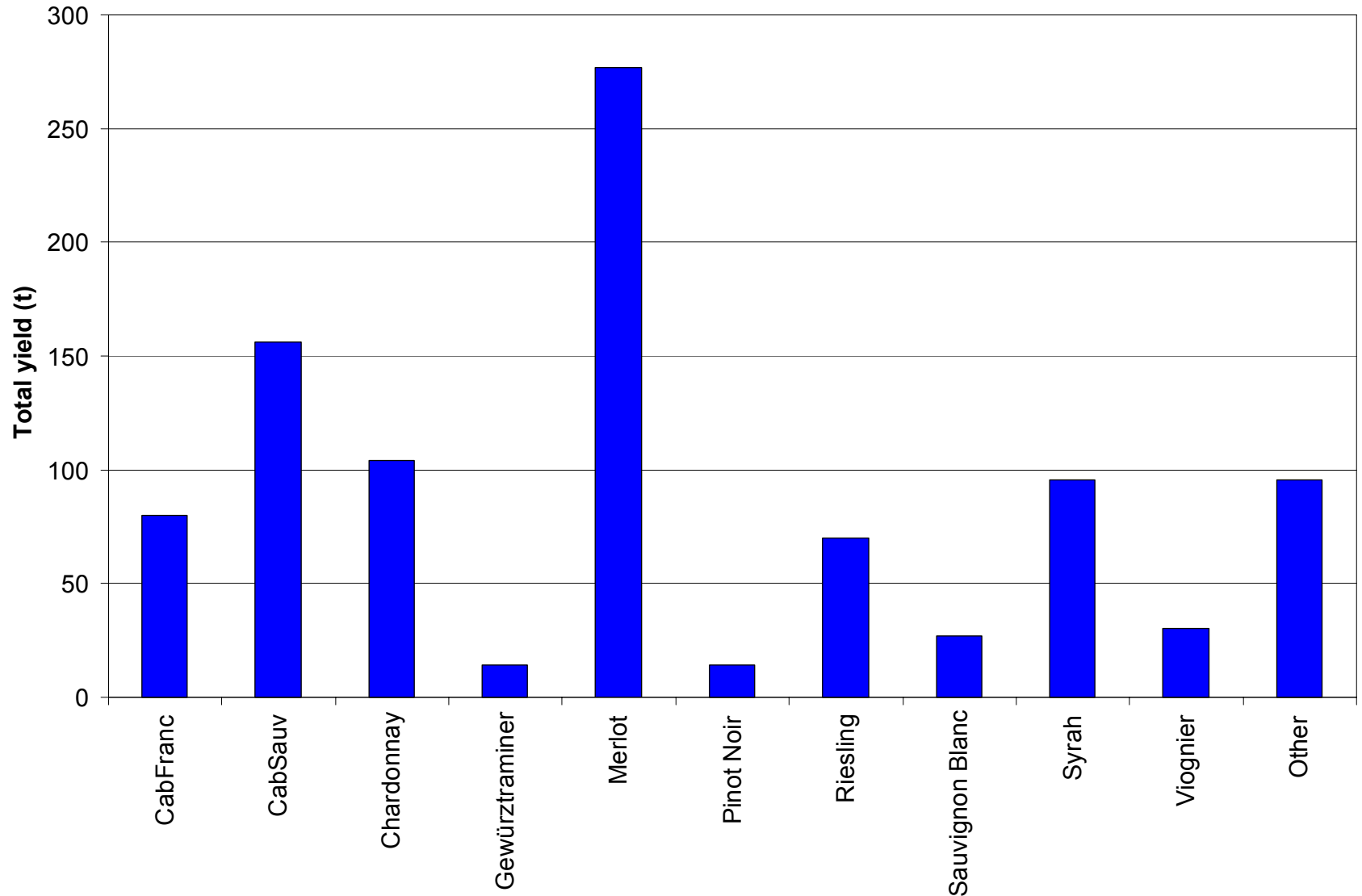
# Colorado grape growing area by year



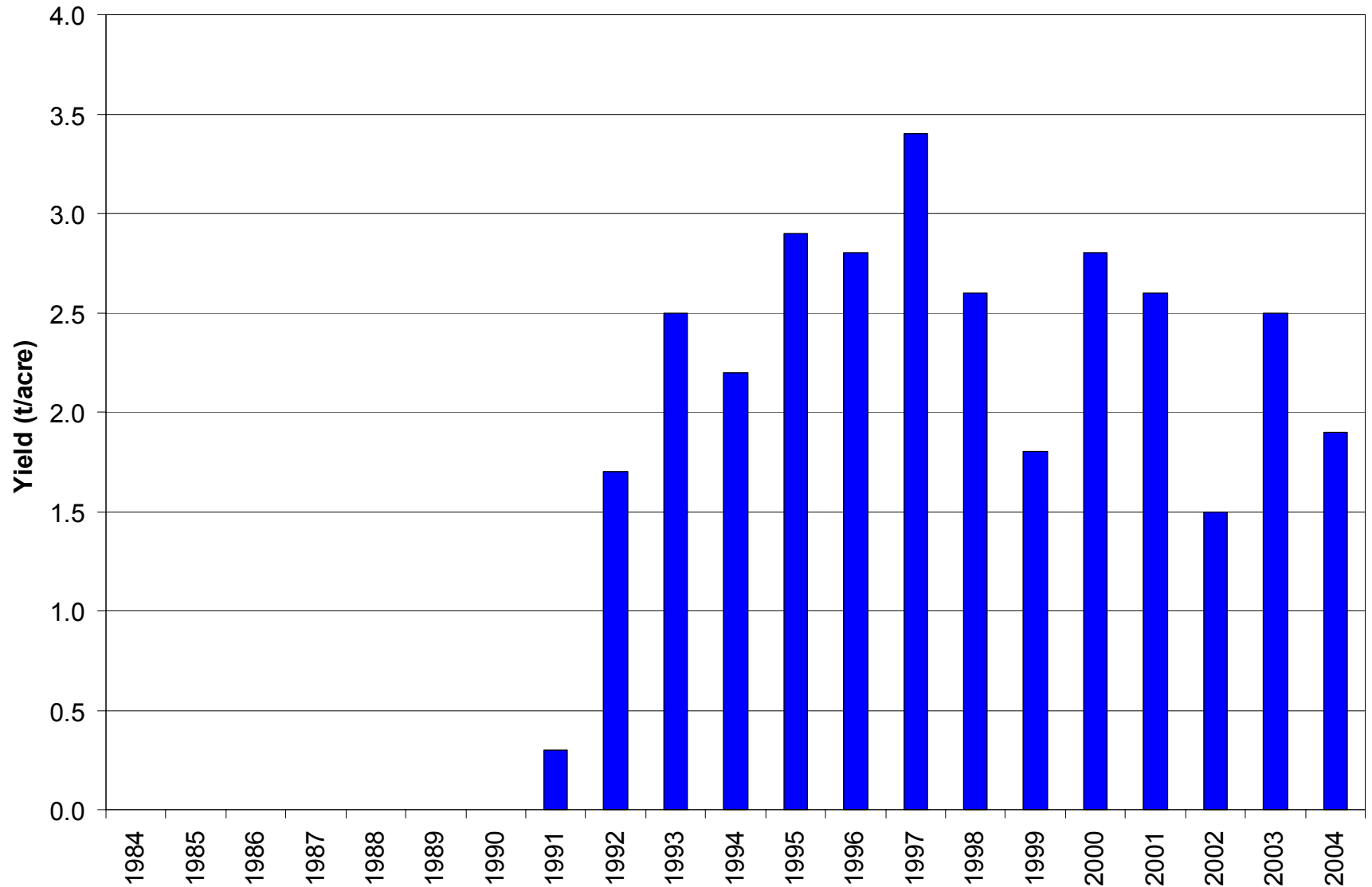
# Colorado grape yield per acre by variety



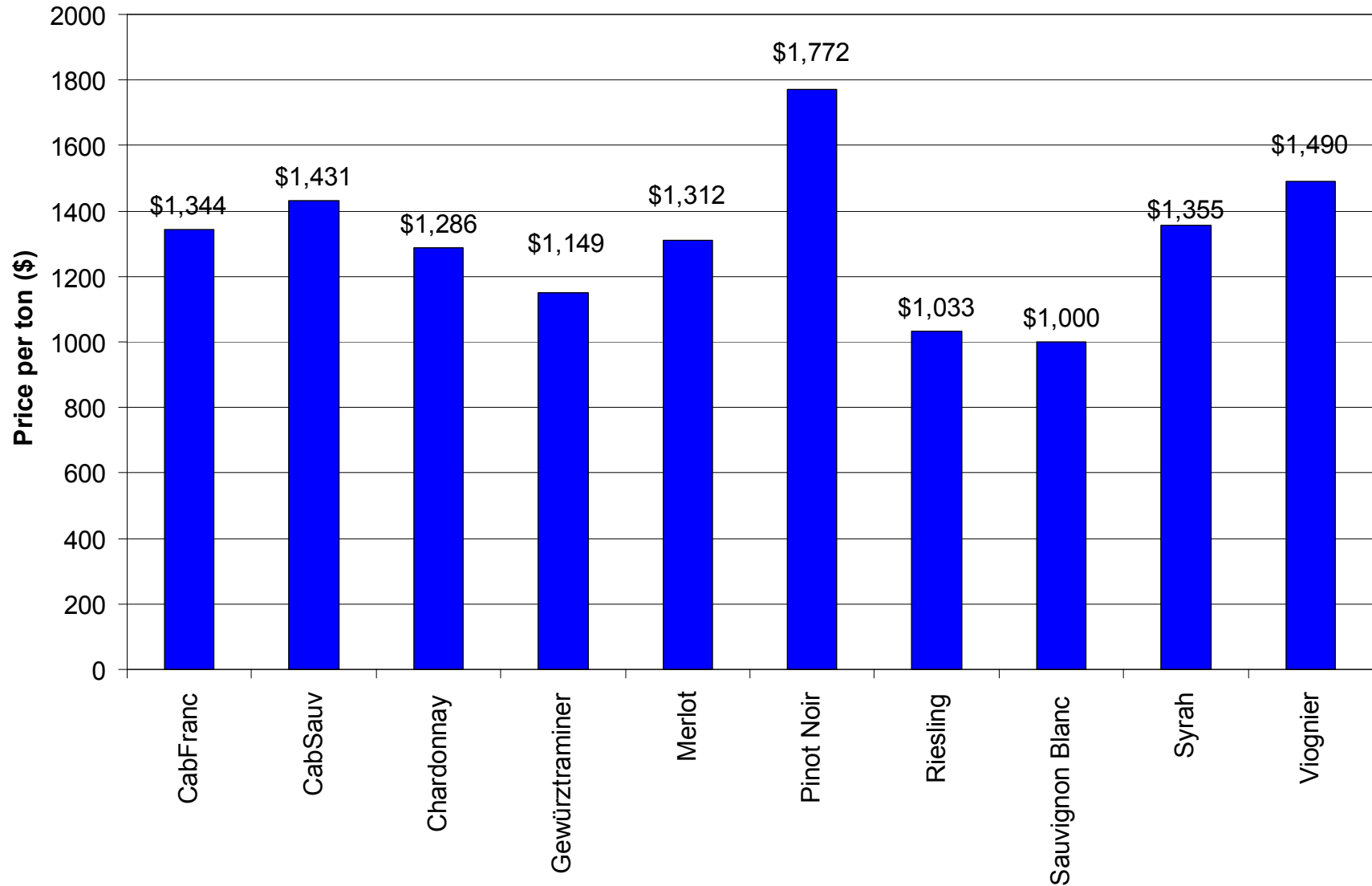
# Colorado grape production by variety



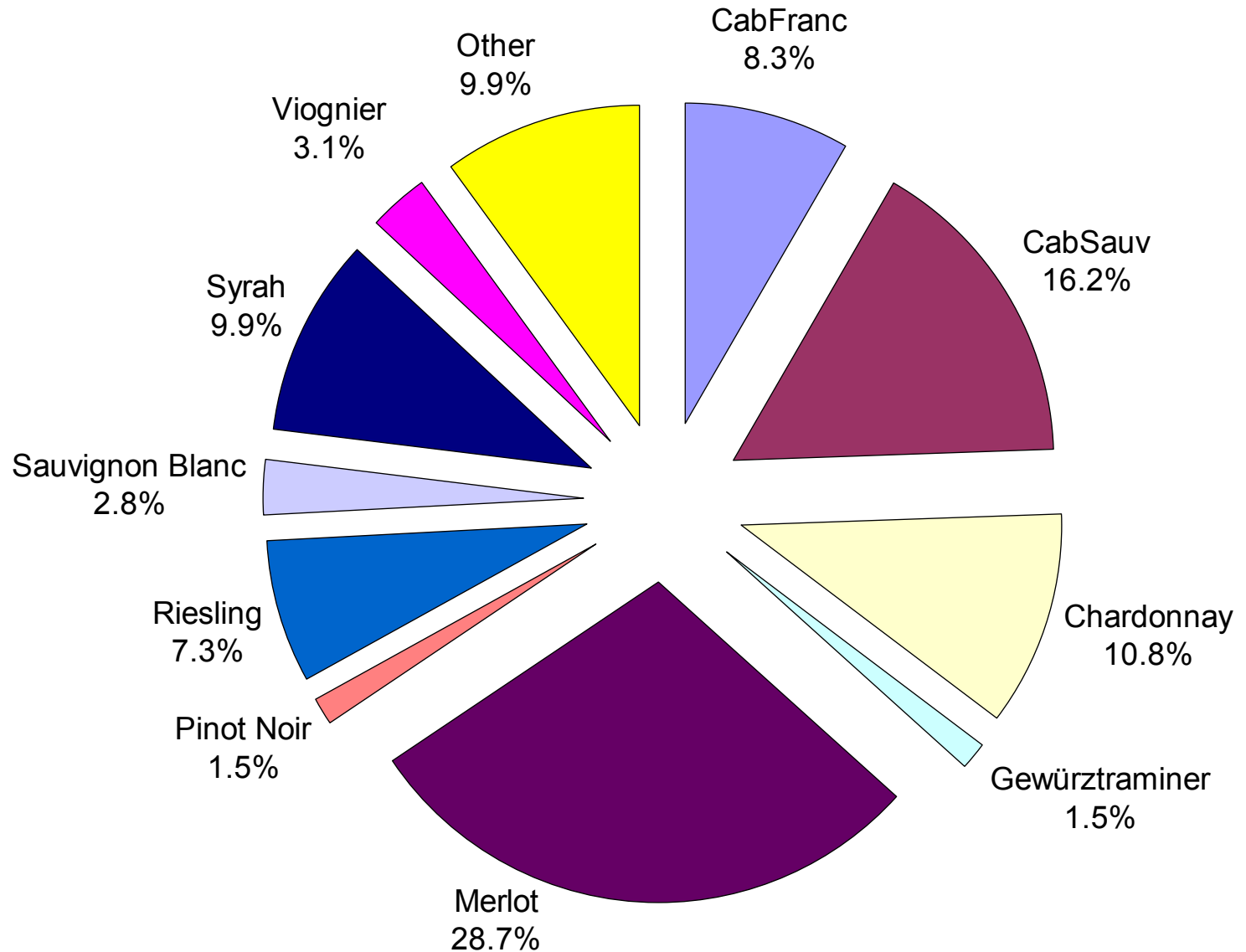
# Colorado grape yield per acre by year



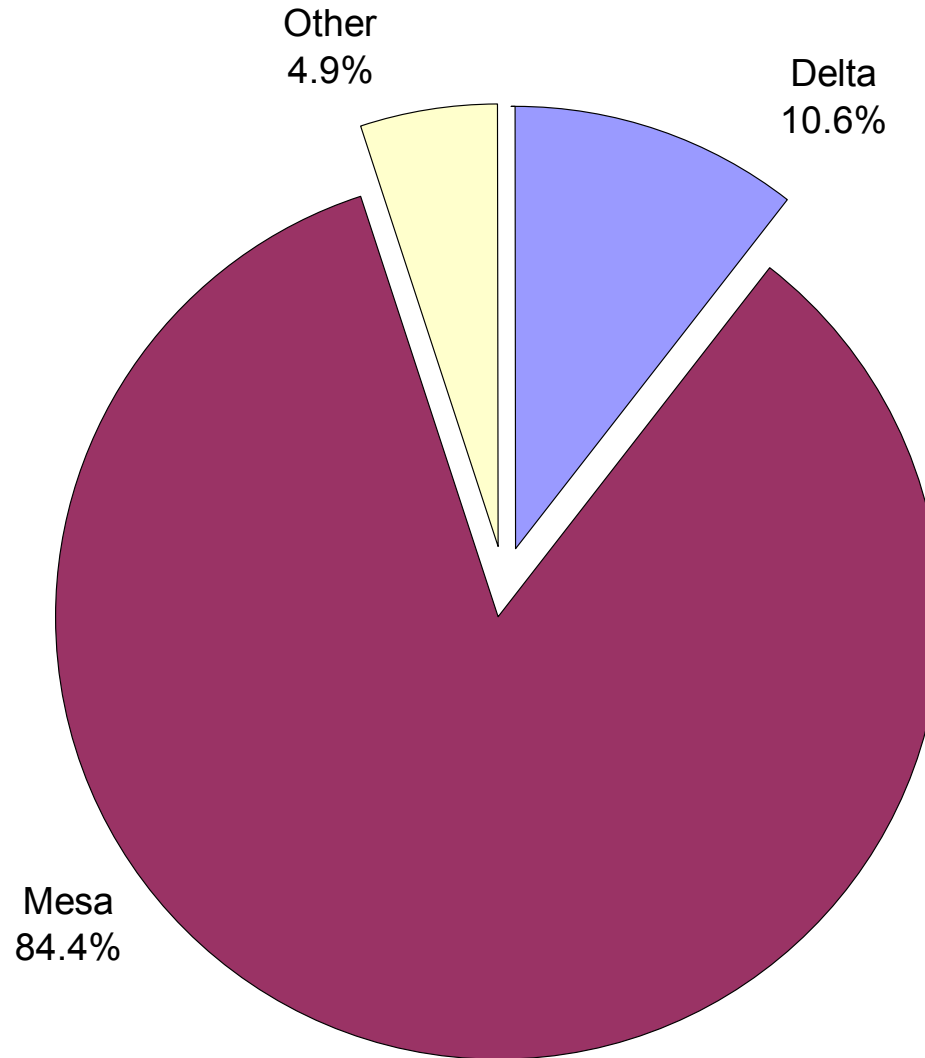
# Colorado grape prices for main varieties



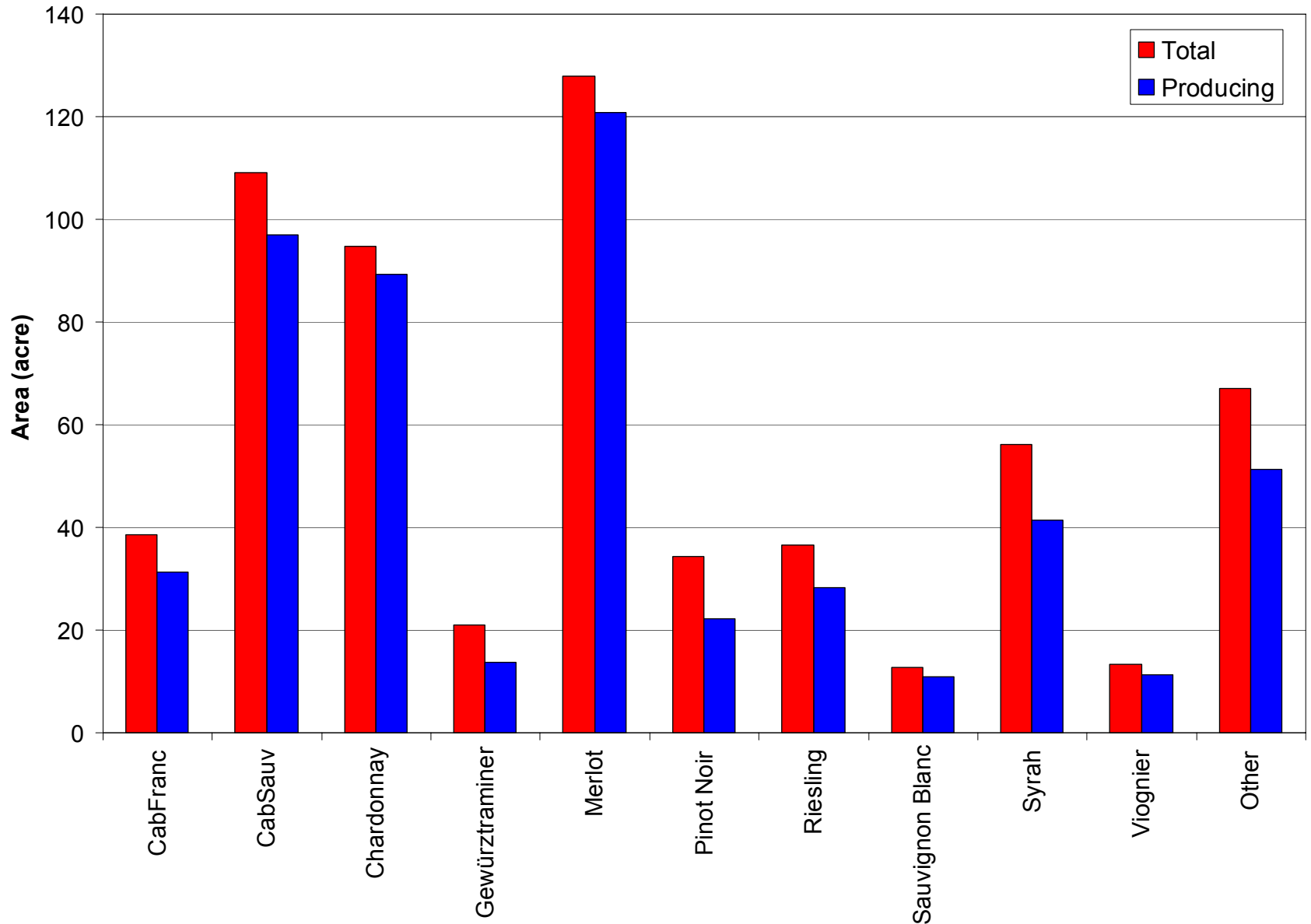
# Colorado grape production by variety



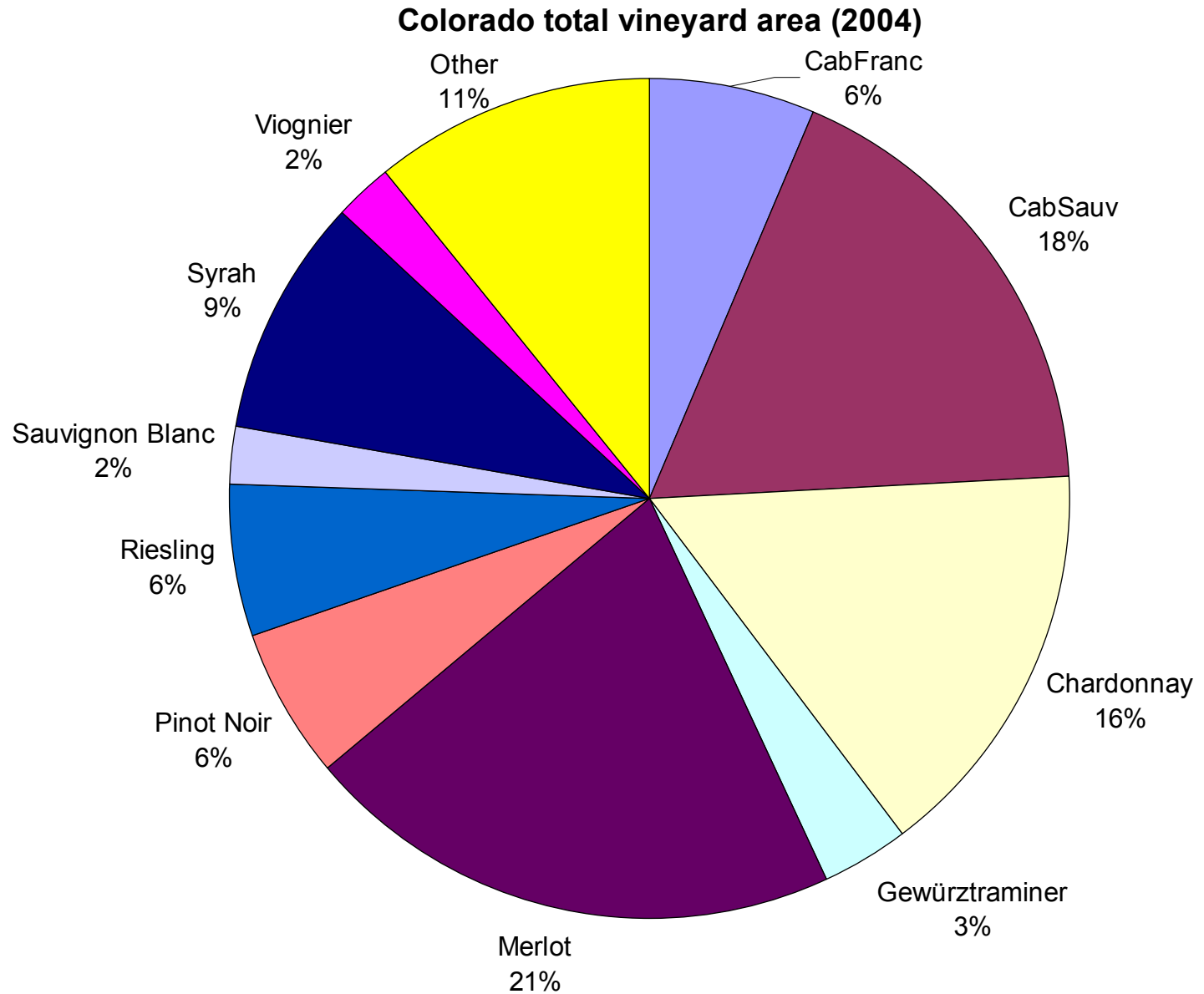
# Colorado grape production by county



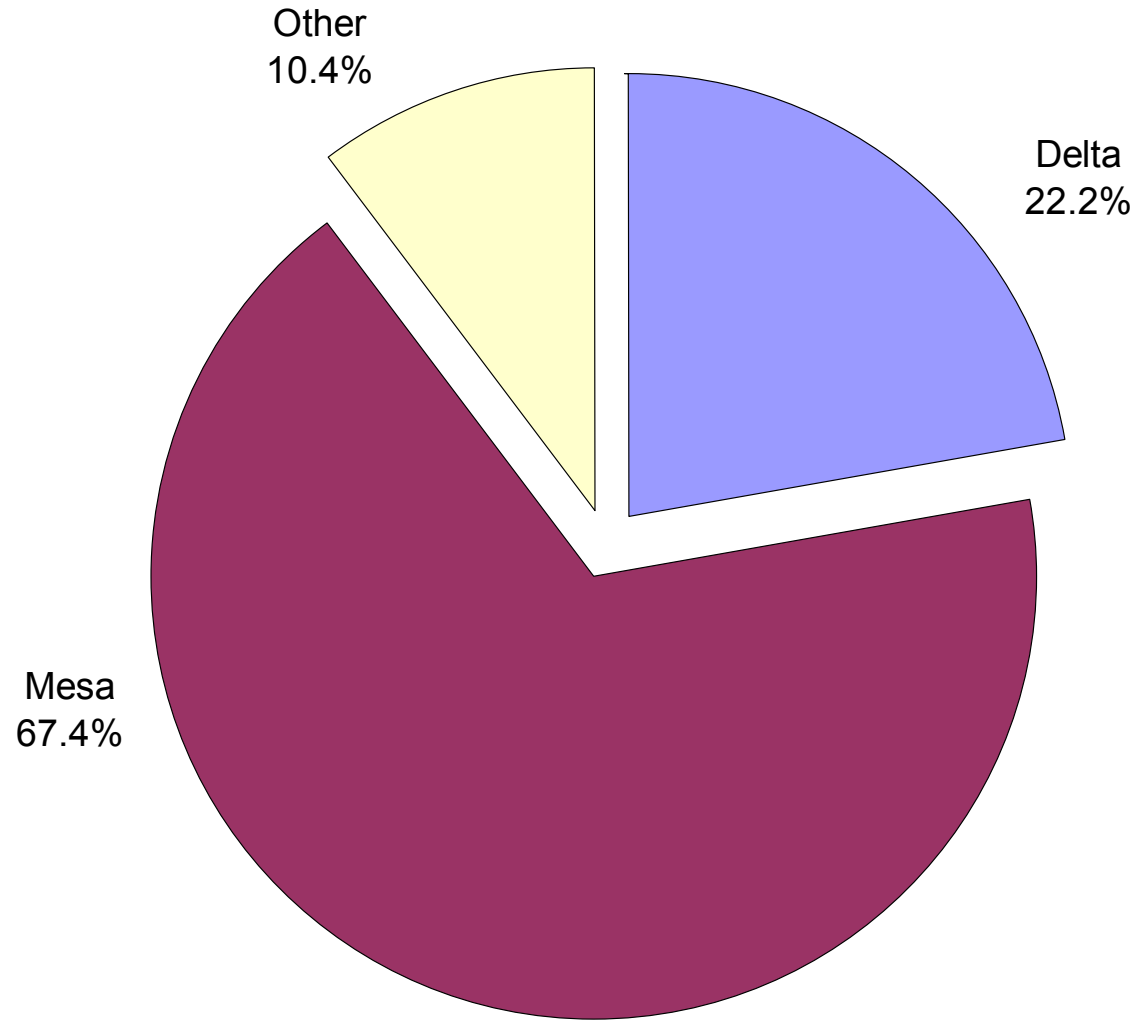
# Colorado grape growing area by variety



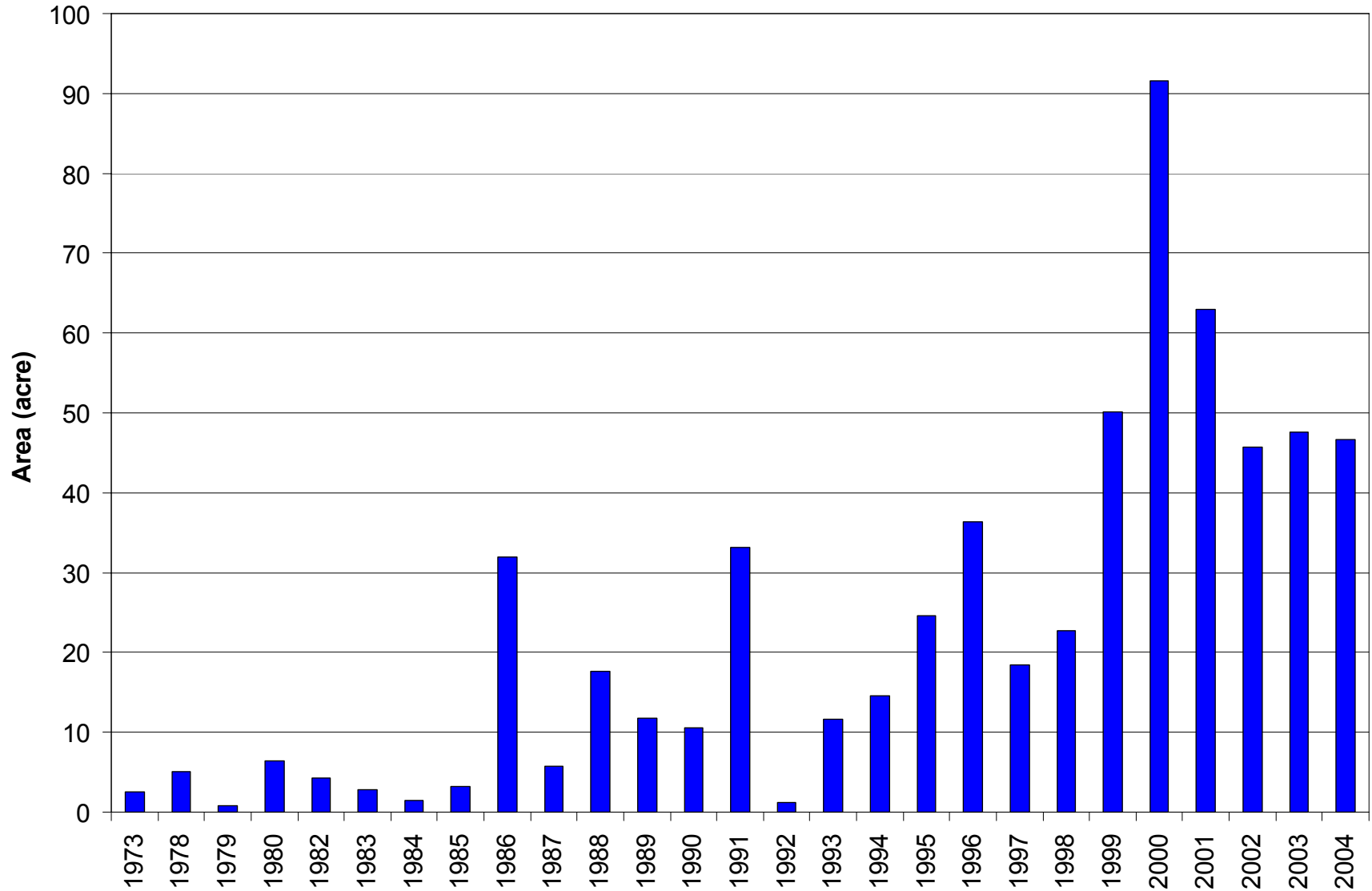
# Colorado grape growing area by variety



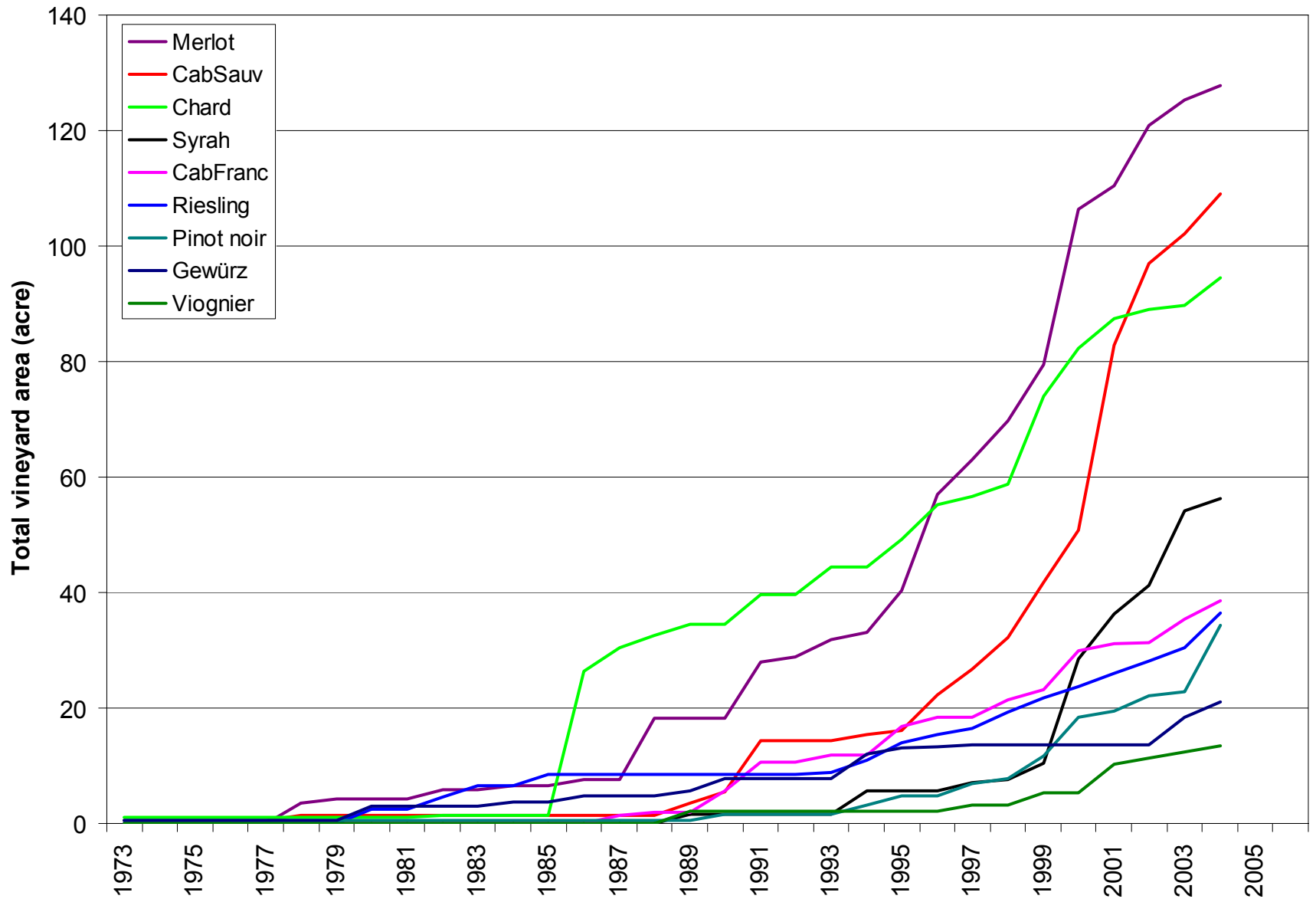
# Colorado total vineyard area by county



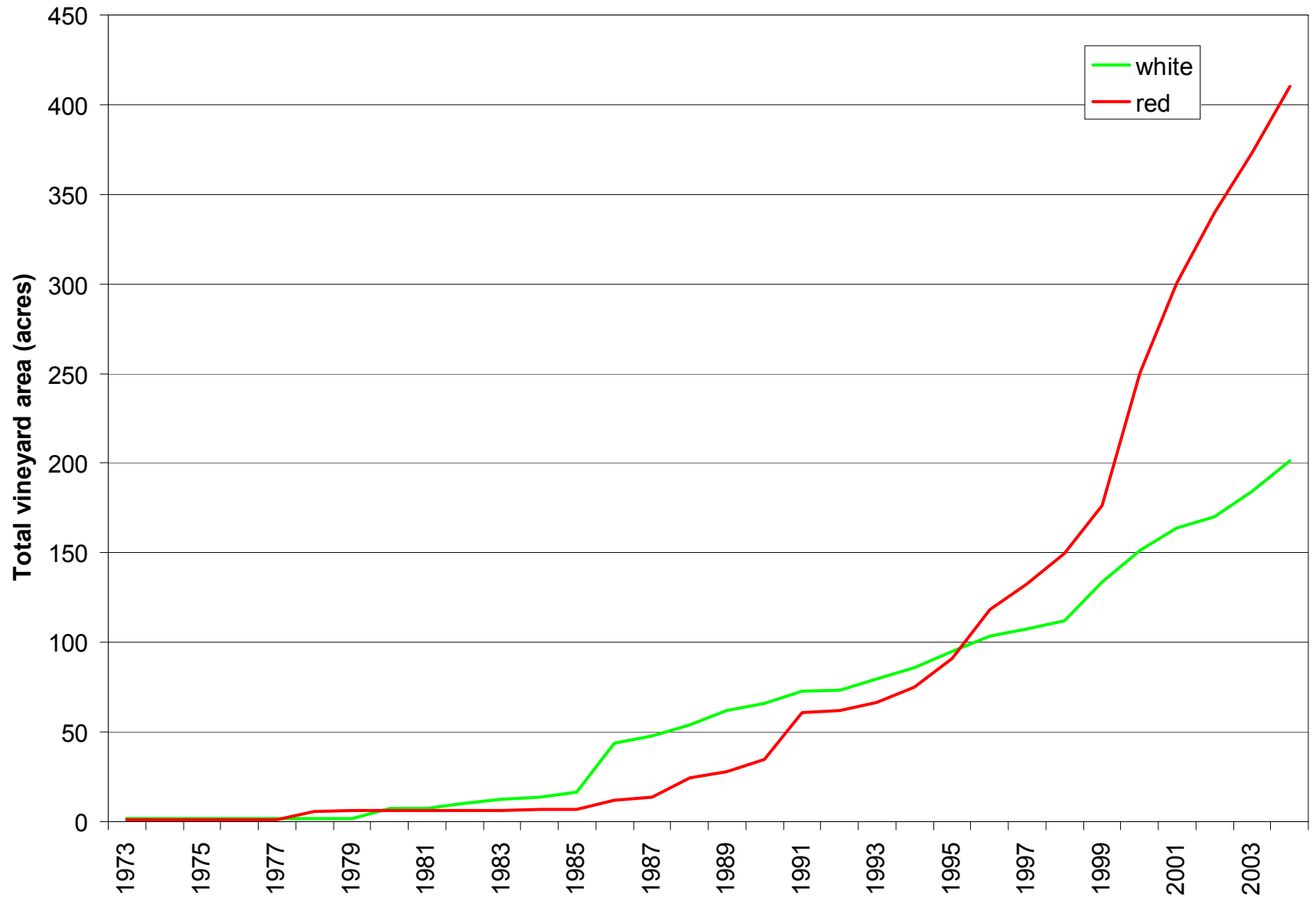
# Colorado vineyards by planting year



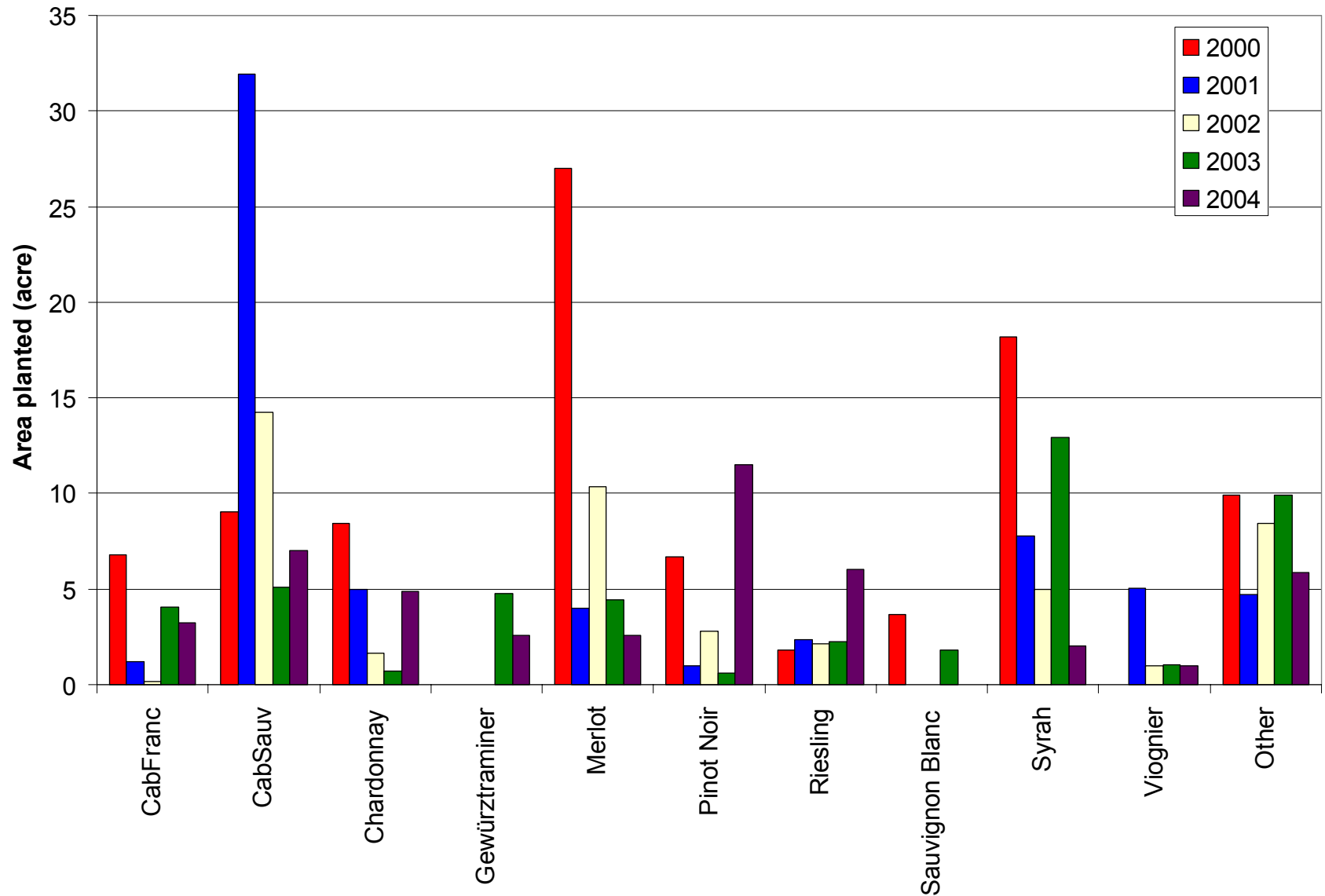
# Colorado area for main varieties



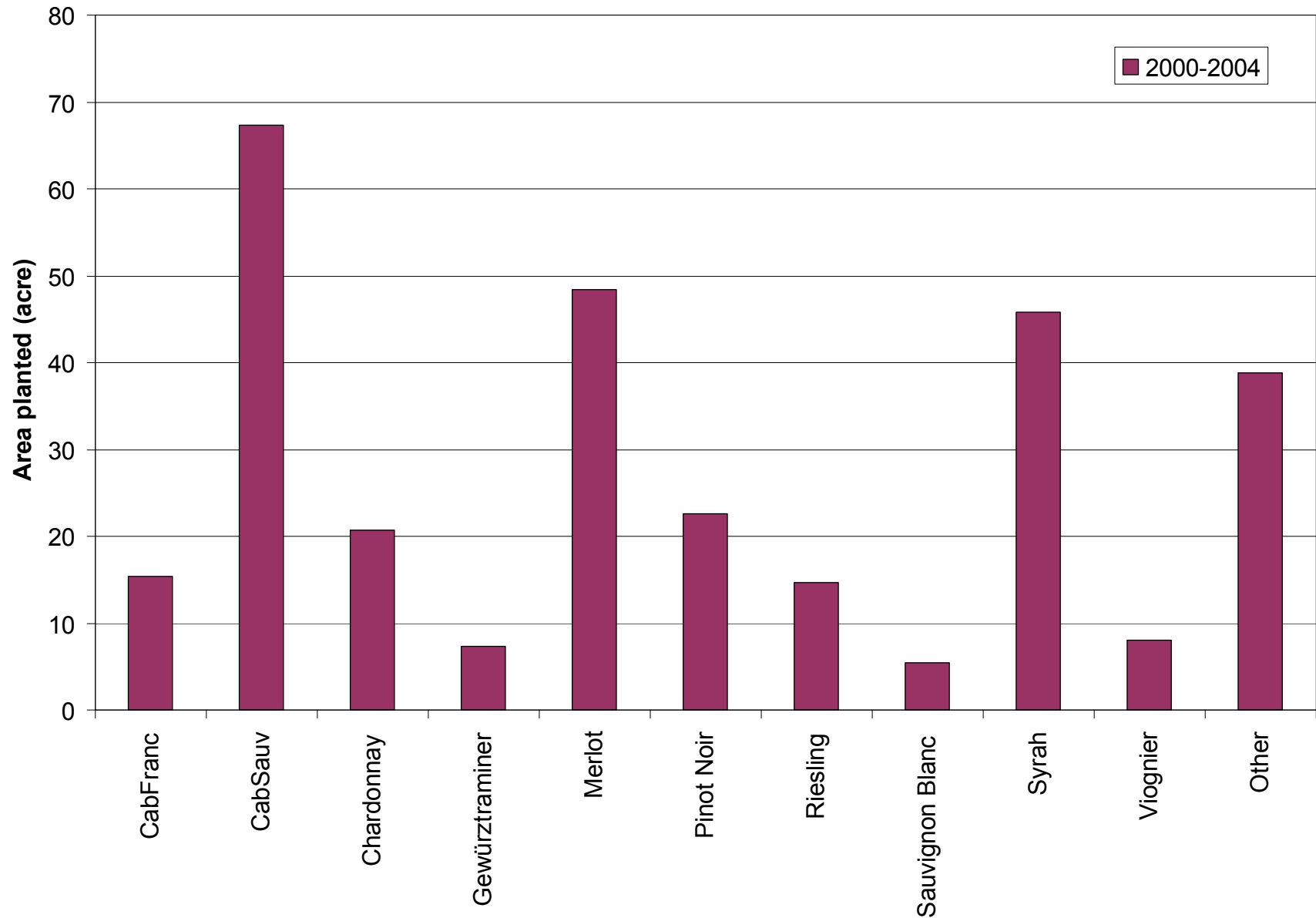
# Colorado wine varieties – red & white



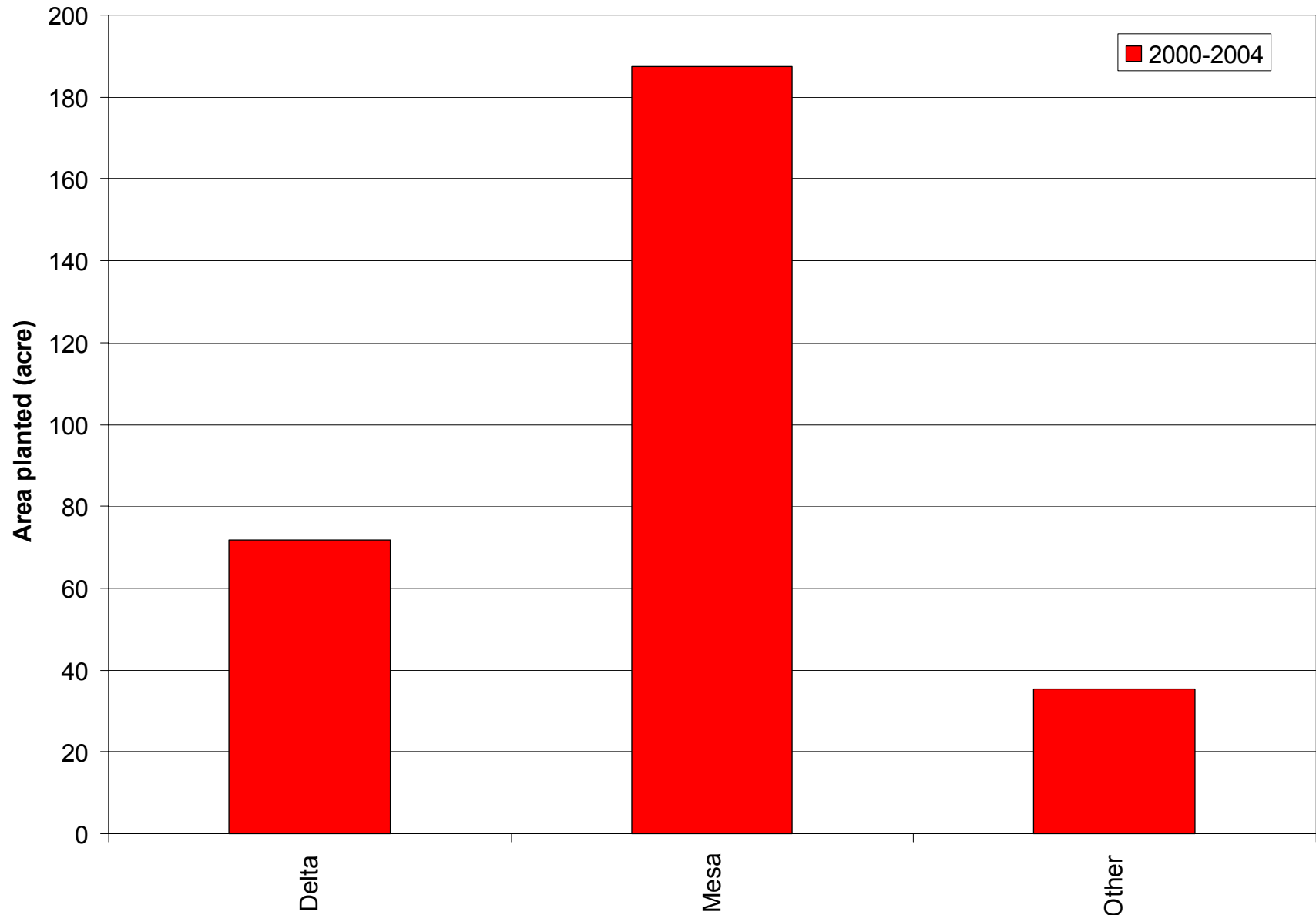
# What has been planted?



# What has been planted?

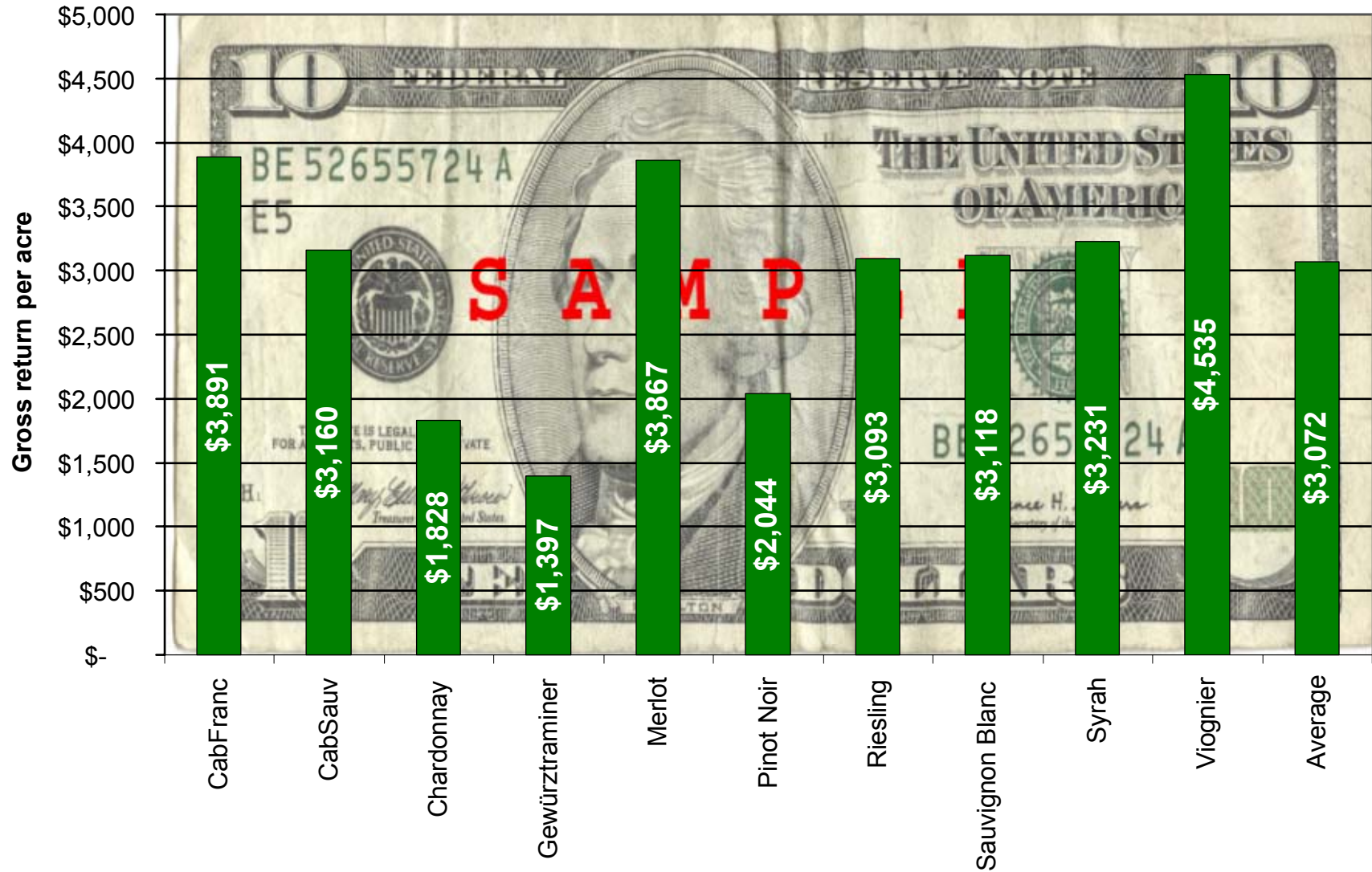


# New vineyard area by county



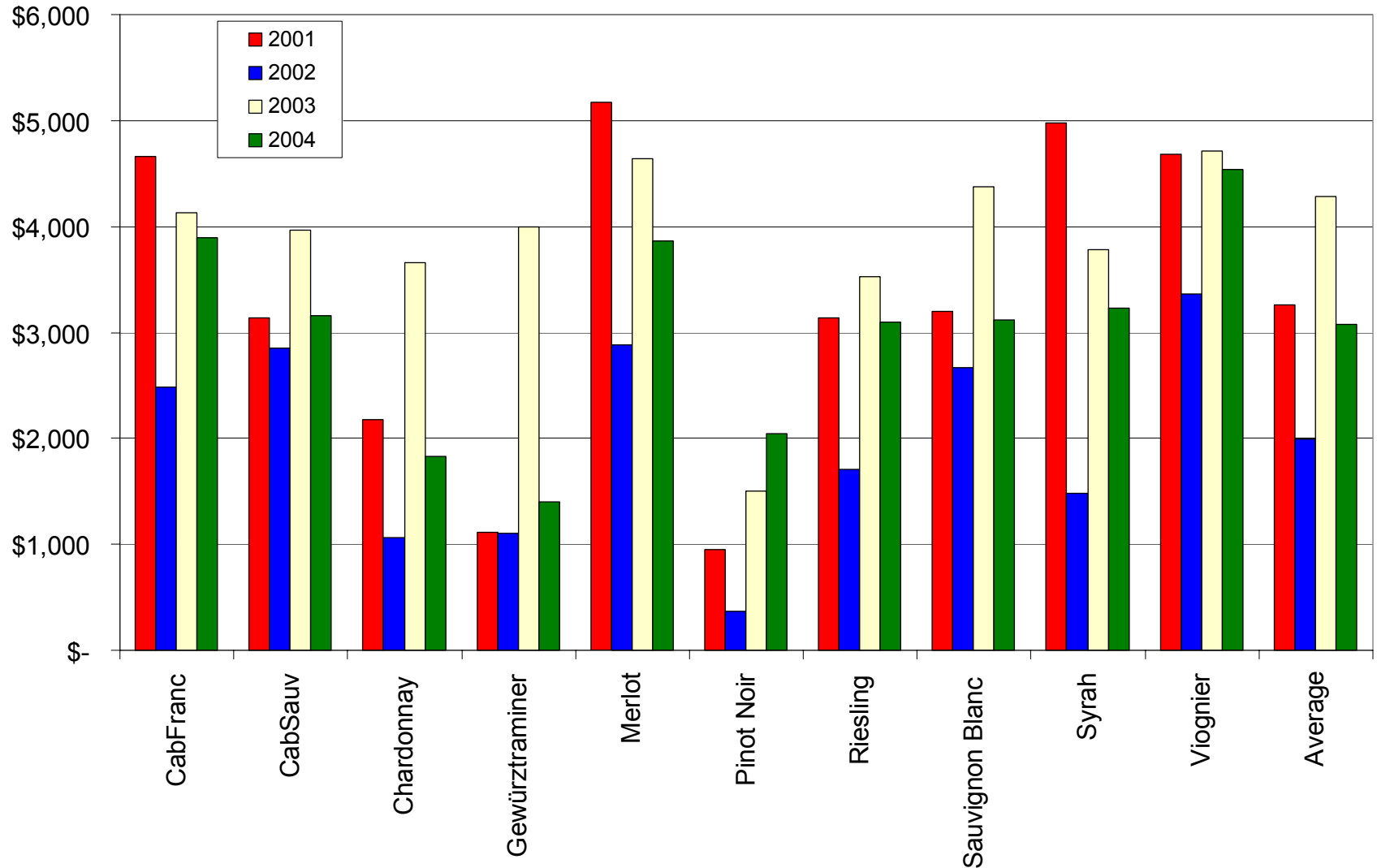
# Gross return per acre, 2004

Gross return per acre (2004)



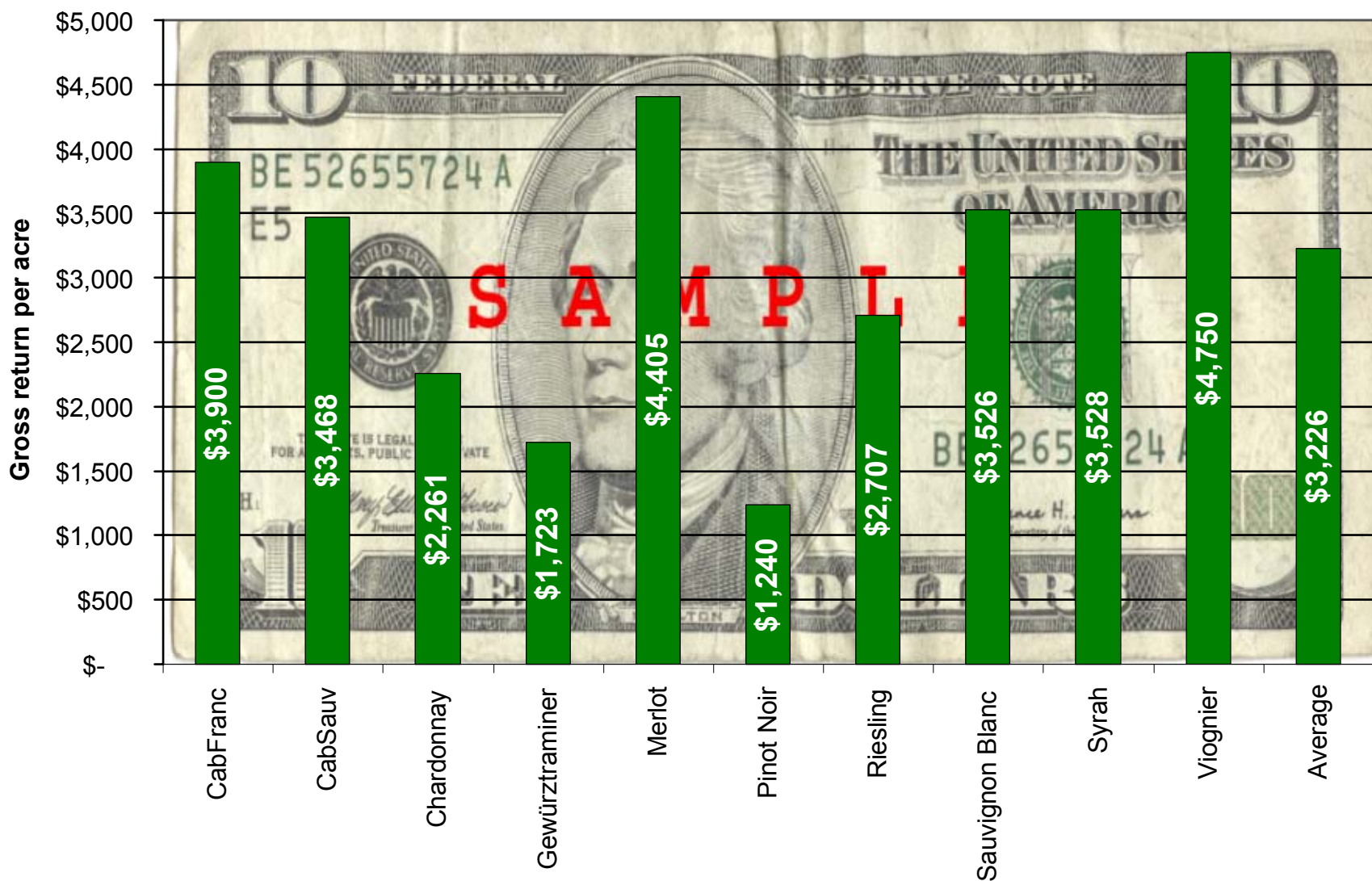
# Gross return per acre, 2001-2004

Gross \$ per acre by year and variety



# Average gross return per acre, 2000-2004

Gross return per acre (2000-2004)



# Looking ahead for 2005

In 2005, we have

- ~600 acres in production
- At a moderate 2.5 t/acre we will have 1,500 tons
- BUT, not all of the grapes produced in 2003 found a home (when production was ~1,200 tons)
- Colorado wine sales totaled ~600,000 liters from July 2003 to June 2004 (equivalent to ~1,000 tons of grapes)
- Wines sales will need to double to keep pace with the increasing grape production

# Acknowledgements

---

Thanks to

- All growers who responded to the survey
- CWIDB for funding the survey
- Amy Montano & Tana Hawk, CSU for help with data entry, analysis, and presentation

# “Guesstimate” of Colorado grape growing area

Total vineyard area (acre)	700-750
Wineries	49 %
Contract growers	51 %
Producing vineyard area (acre)	650
Average vineyard size (acre)	6.2
Number of growers	120-130

Note: This “guesstimate” was prepared from data provided in the 1999 to 2004 surveys. A number of growers never responded to either of those surveys. Taking into account non-respondents, I estimate the total Colorado vineyard area at around 700-750 acres.

Dr Horst Caspari  
March 1, 2005

# “Guesstimate” of Colorado Vineyard Area

“Guesstimate” of Colorado vineyard area (2004)

