

PC Communications

Academic Computing and Networking Services, Colorado State University, Fort Collins, CO 80523 (970) 491-7276

CONNECTING A MACINTOSH WITH OS X TO THE CSU MODEM POOL

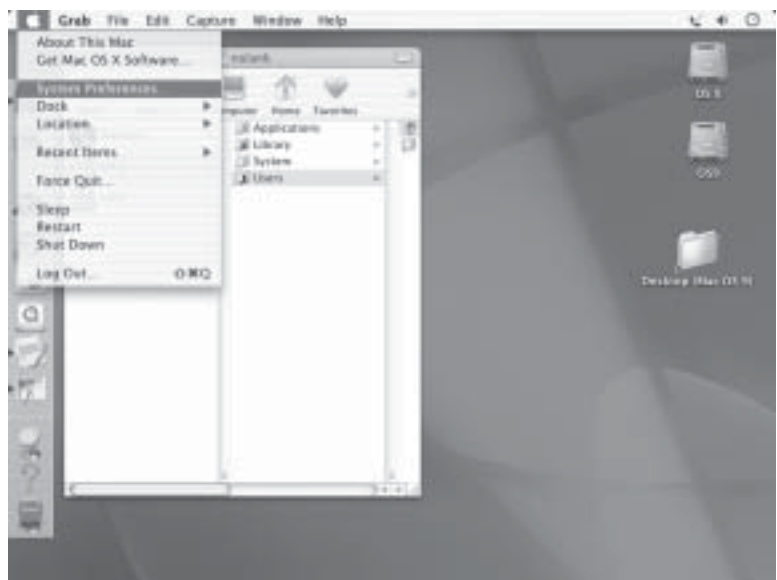
Subscribing to the CSU Modem Pool

1. To subscribe to the University dialup service you will need an eID. If you do not have an eID, you can get one on the eID Web Page at <http://eid.colostate.edu>.
2. To use the CSU modem pool, you must first subscribe to and pay for use of the dialup service. Only CSU students, faculty, and staff who have subscribed can use the modem pool. Students pay \$18 each semester for fall and spring semesters and \$12 for summer semester or \$48 per calendar year. Faculty, administrative professionals, staff, and retirees are charged \$48 a year, prorated on a monthly basis from the date of subscription. (See URL www.colostate.edu/acns/modems for more information.)

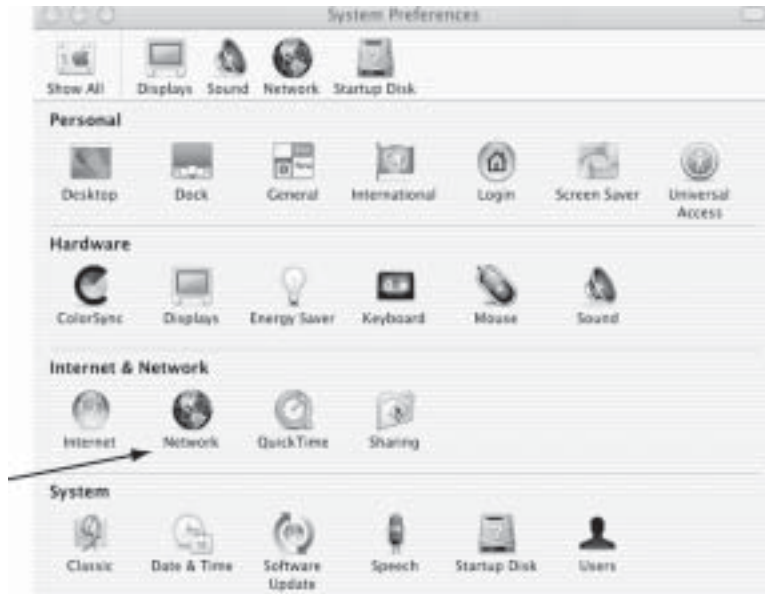
Configuring PPP for OS X

1. Attach your telephone line to your computer's modem and start your Macintosh.

Under the **Apple Menu** in the upper left hand corner, select **System Preferences**.



2. In the **System Preferences** window under **Internet & Network**, select **Network**.



3. In the **Network** window under the **TCP/IP** tab:

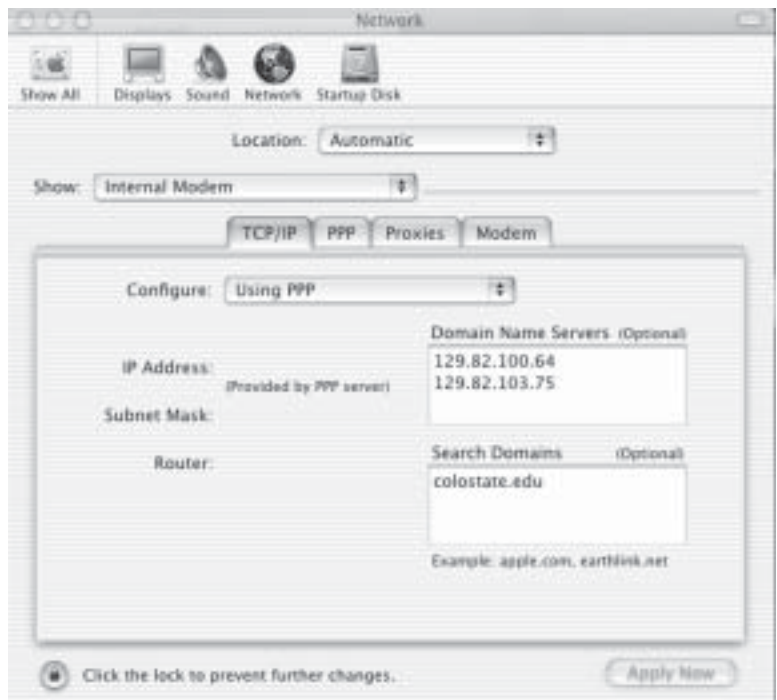
Configure should be set to **Using PPP**

In the **Domain Name Servers** box type the following:

129.82.100.64 (Press Return)
129.82.103.75

In the **Search Domains** box type:

colostate.edu



4. Still in the **Network Window**, click on the **PPP** tab

In the **Service Provider** box type:

CSU Modem Pool

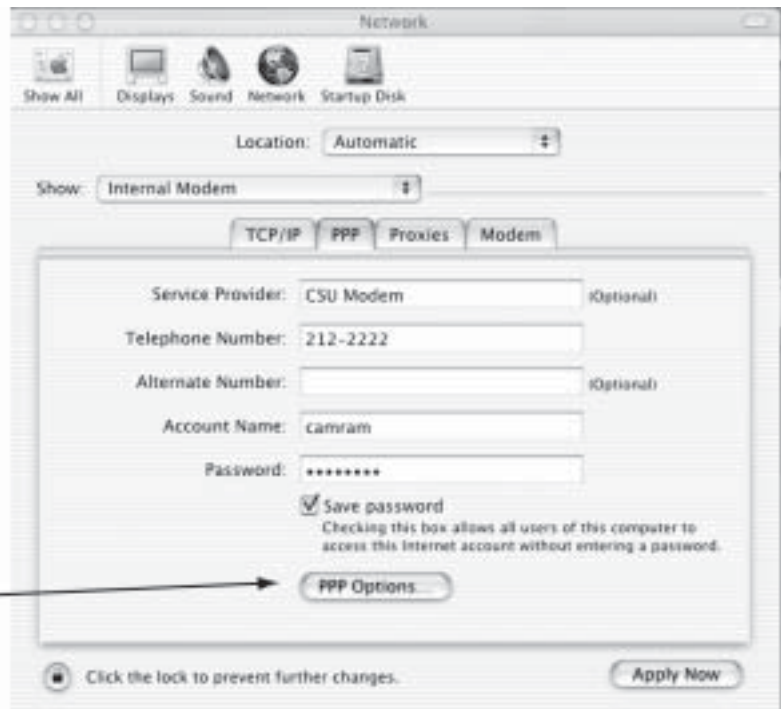
In the **Telephone Number** box type:

212-2222

In the **Account Name** box type your eID name.

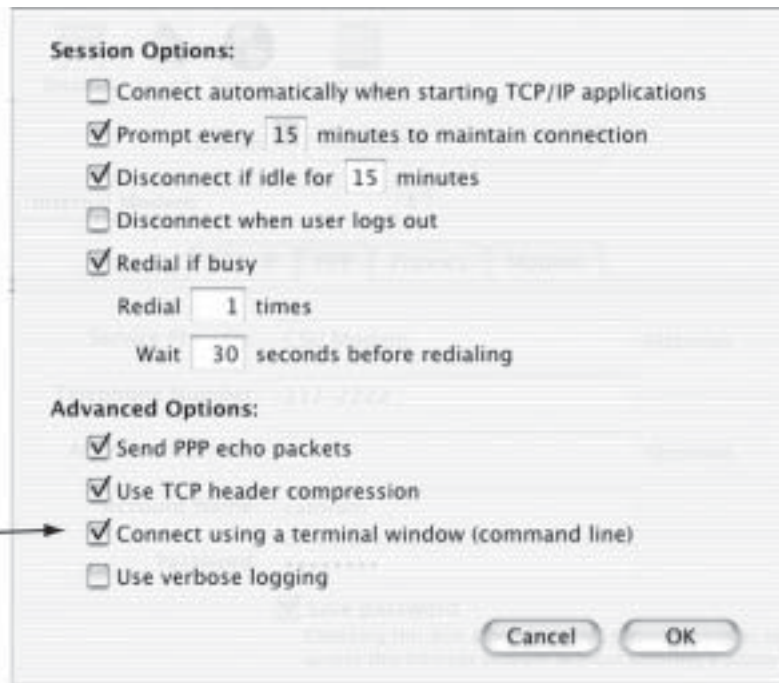
In the **Password** box type your eID password.

Next click on the **PPP Options** button under the **PPP** tab.



5. After clicking on the **PPP Options** button in the preceding step, you should see the **Session Options** window.

Under **Advanced Options**, be sure the “**Connect using a terminal window**” box is checked. Then click **OK**.



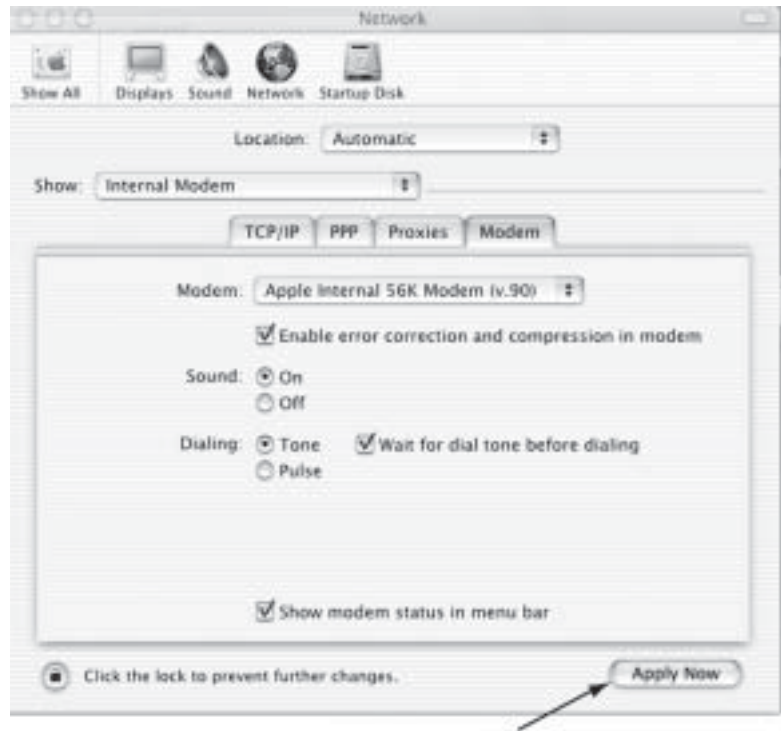
6. After clicking **OK** in the preceding step, you should see the **Network** window.

Click on the **Modem** tab.

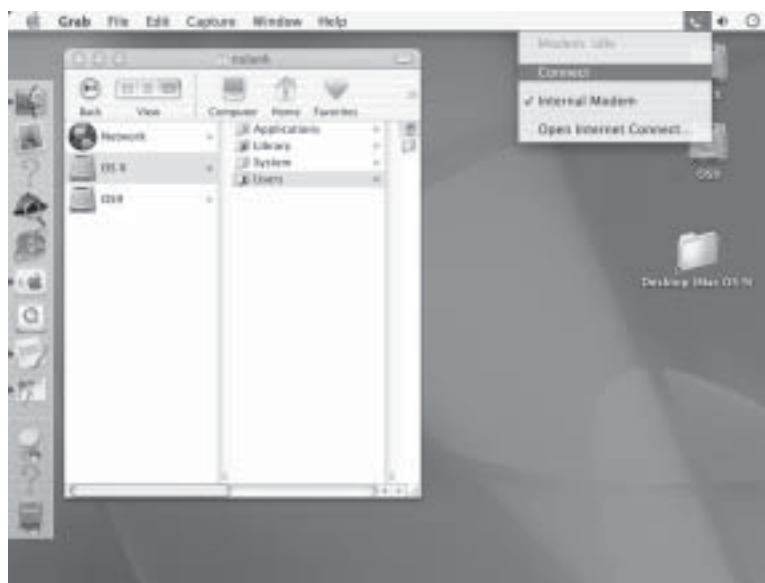
Under the **Modem** tab, select your modem type and turn the modem sound on or off.

Be sure the “**Show modem status in menu bar**” box is checked.

When you are finished, click the **Apply Now** button.



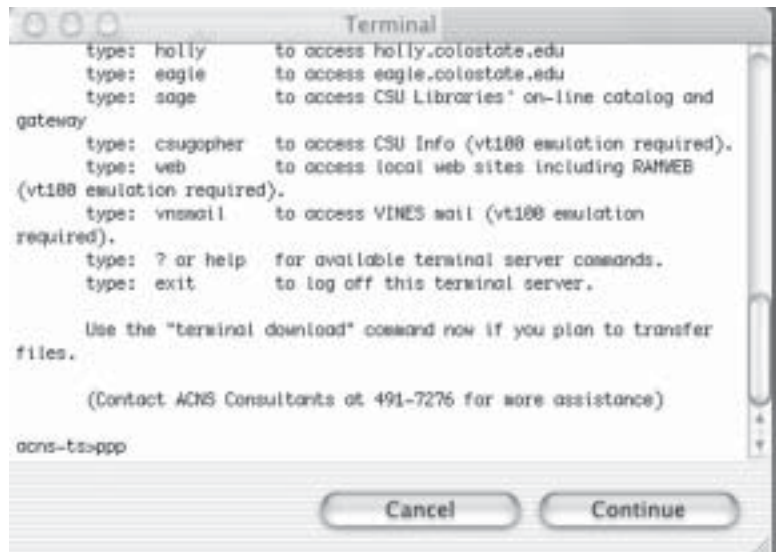
7. After you click the **Apply Now** button in the preceding step, your monitor should display the Macintosh desktop. Find the **telephone icon** in the top right hand corner and click on it. Then select **Connect** from the pulldown menu to connect to the modem pool.



8. The modem will dial the CSU Modem Pool phone number, and a terminal window will appear. You may have to wait 10 – 20 seconds for information to appear in the terminal window.

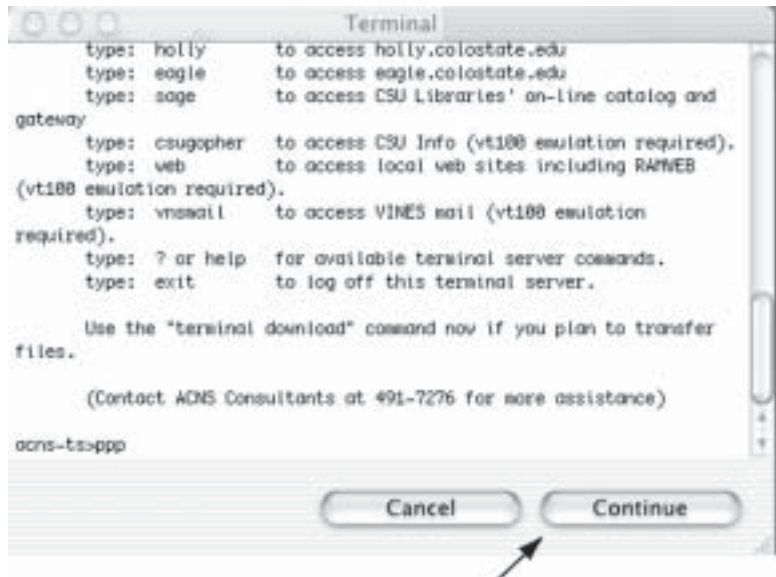
At the **Username** prompt, type your eID name and press Return.

At the **Password** prompt, type your eID password and press Return.

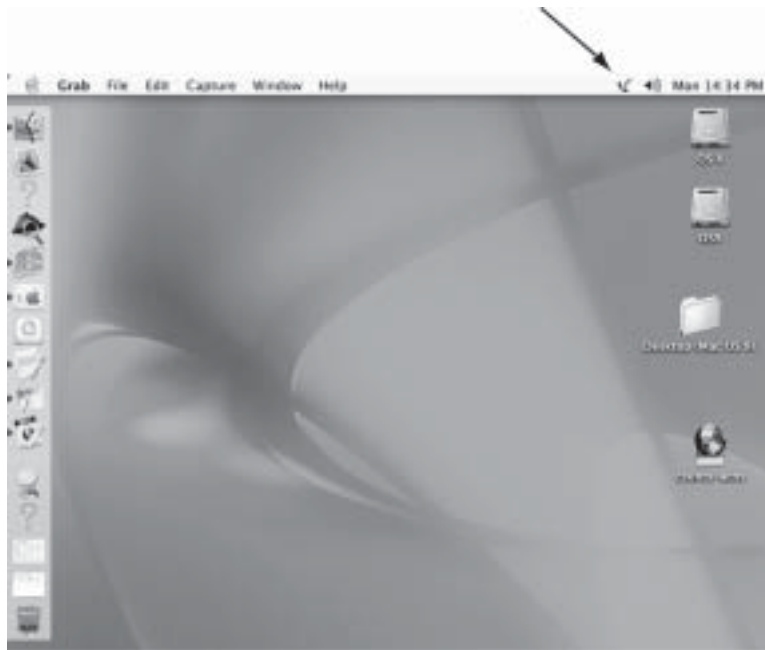


At the **acns-ts>** prompt type **ppp** and press Return.

Then click on the **Continue** button.



You are now connected to the CSU modem pool. The telephone icon in the upper right hand corner shows your connected state.



9. To disconnect from the CSU modem pool, click on **telephone icon** in the top right hand corner and select **Disconnect**.