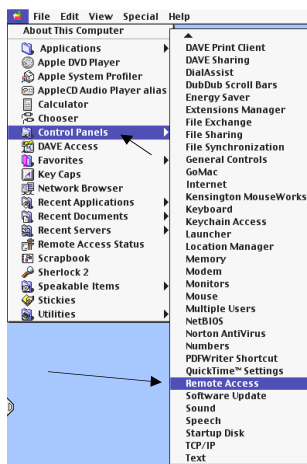


**Connecting to the Colorado State University Modem pool with a Macintosh computer running operating system 8.5 or higher.  
Requires the AppleTalk, TCP/IP and the Remote Access Control Panels be installed.**

1. If you do not have a holly or lamar e-mail account, open one in 221 Weber
2. Open and pay for a CSU modem pool account.  
(See [www.colostate.edu/acns/modems](http://www.colostate.edu/acns/modems) for more information).
3. Attach your telephone line to your computer's modem
4. Start up your Macintosh

5. Under the Apple Menu in the left hand corner, **select Control Panels / Remote Access**



6. Under *Setup*, please do the following:

**Click on *registered user***

**Name:** Type in your holly or lamar user name

**Password:** Type in your holly or lamar password

**Check "Save Password"**

**Number:** Type in 222-1212  
(This is the number to CSU 2-hour modem pool.)

At the bottom of the Remote Access window **click on the "Options" Button.**



7. Click on the *Protocol Tab*

*Use Protocol:* Should be set to PPP.

**Check "Allow error correction and compression in modem"**

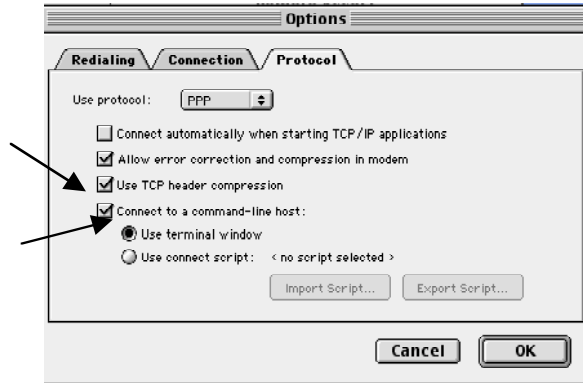
**Check "Use TCP header compression"**

**Check "Connect to a command-line host"**

**Check "Use terminal window"**

**Click on "OK"**

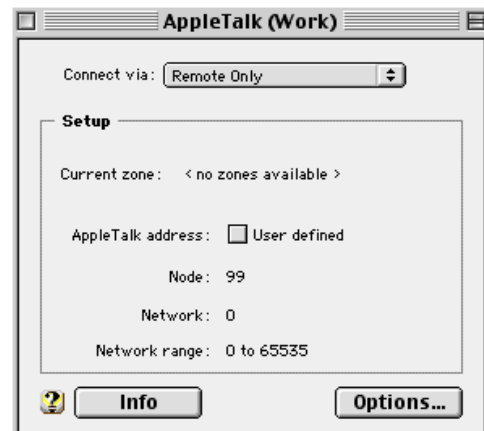
Close the "Remote Access" window. **Click on the Save button.**



8. Under the Apple Menu, **select Control Panels / AppleTalk**

Under *Connect via:* **select "Remote Only"**

**Close** the AppleTalk window. **Click on the Save button.**



9. Under the Apple Menu, **select** *Control Panels / TCP/IP*

**Connect via:** select "PPP"

**Configure:** select "Using PPP Server"

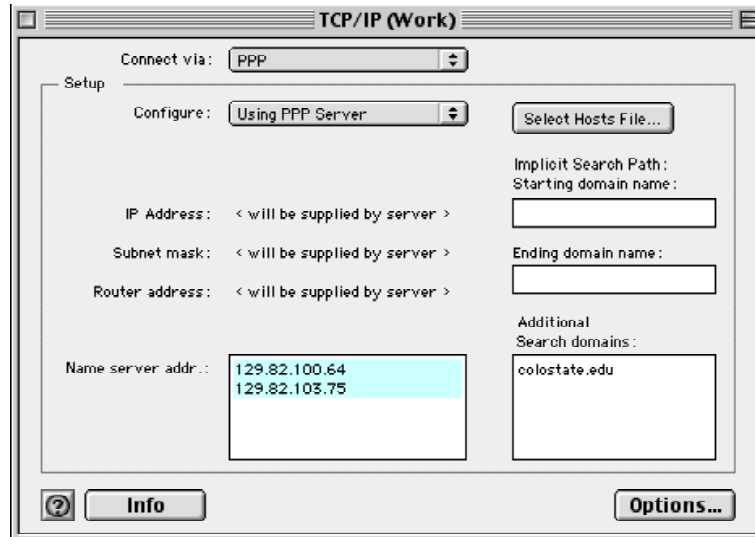
**Click** in the *Name server addr* box and **type:**

129.82.100.64

(press **Enter**)

129.82.103.75

**Click** in the *Additional Search domains* box and **type** *colostate.edu*

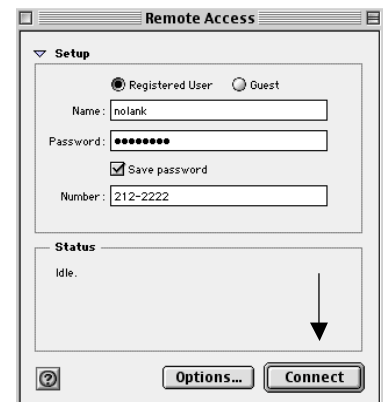


Close the TCP/IP window. **Click** on the *Save* button.

10. To connect to the CSU modem pool, go to the Apple Menu, **select** *Control Panels / Remote Access*

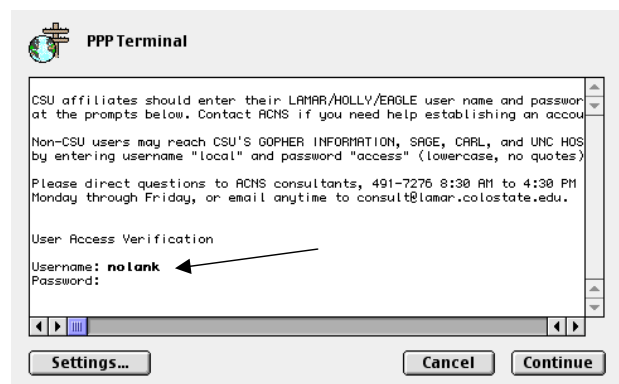
**Click** on *Connect*.

Modem should dial into CSU.



11. You will be prompted to type your lamar or holly account *user name*. **Type** your user name and **press enter**.

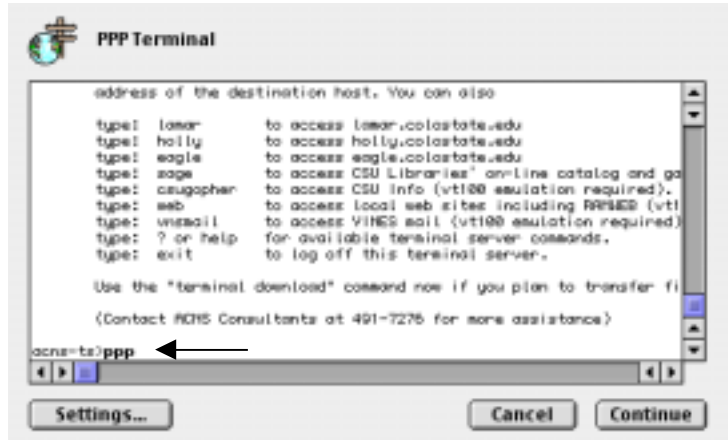
**Type** your lamar or holly *password* and **press enter**.



12. At the *acns-ts>* prompt type:  
*ppp*

Press *Enter*

You are now connected to the CSU Modem Pool.



13. You can now access the Internet via the CSU modem pool. You can use programs such as Netscape, Internet Explorer, Eudora, etc.

The Remote Access window will display connection statistics.

When you wish to disconnect, **click** on the *Disconnect* button

