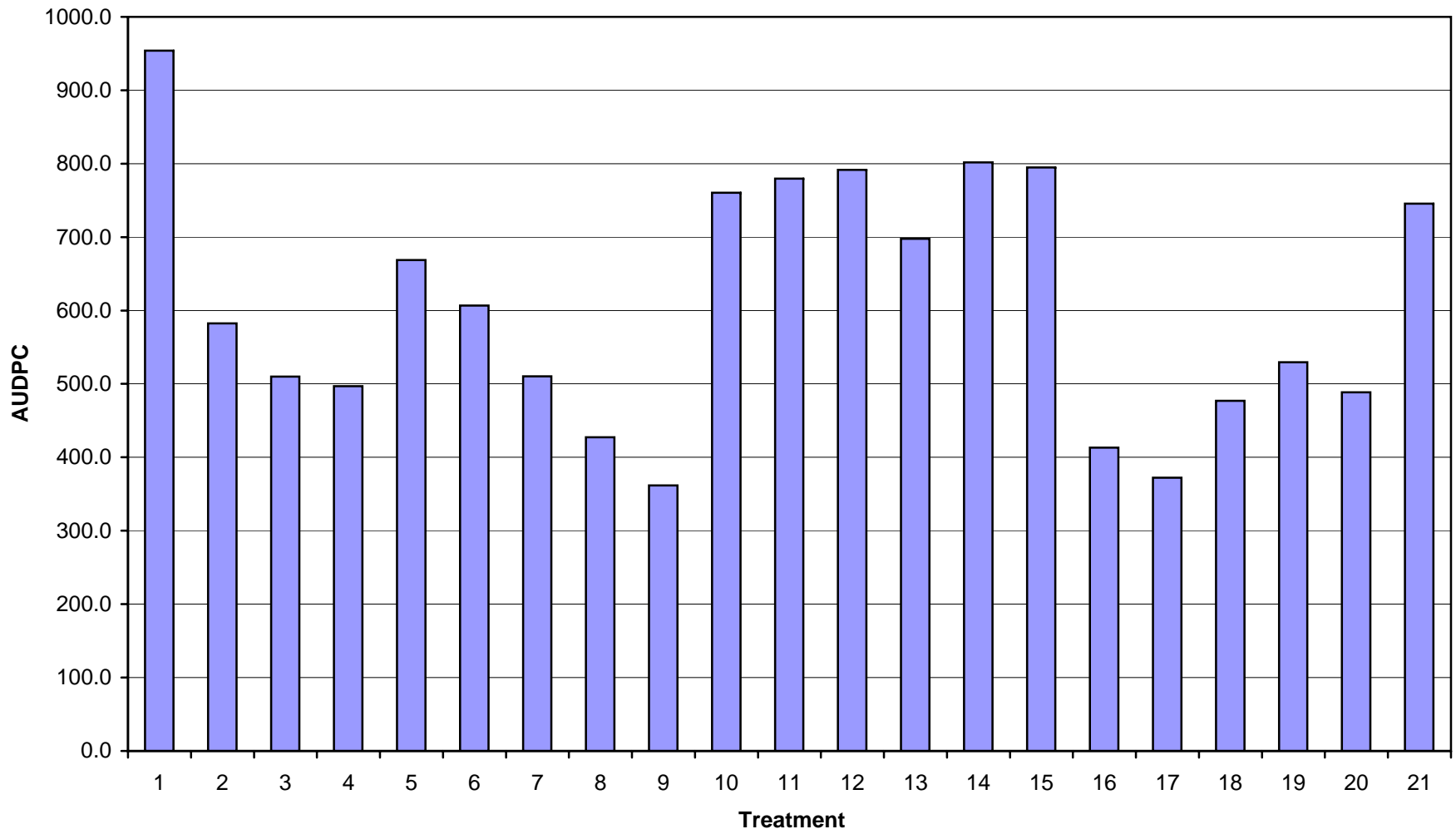
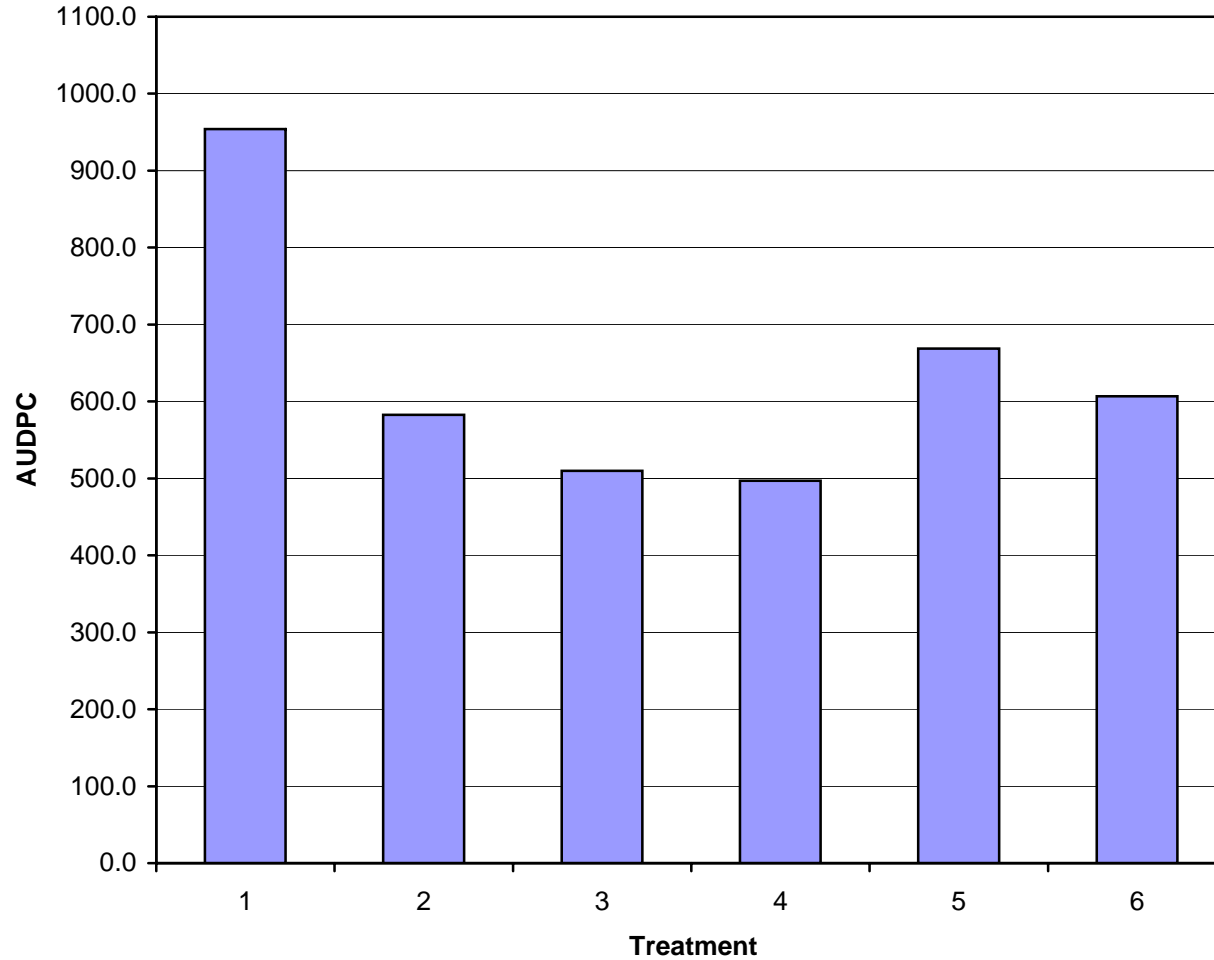


**Area Under the Disease Progress Curve for Early Blight
2004 Fungicide Trial, Colorado State University
San Luis Valley Research Center, Center, CO**

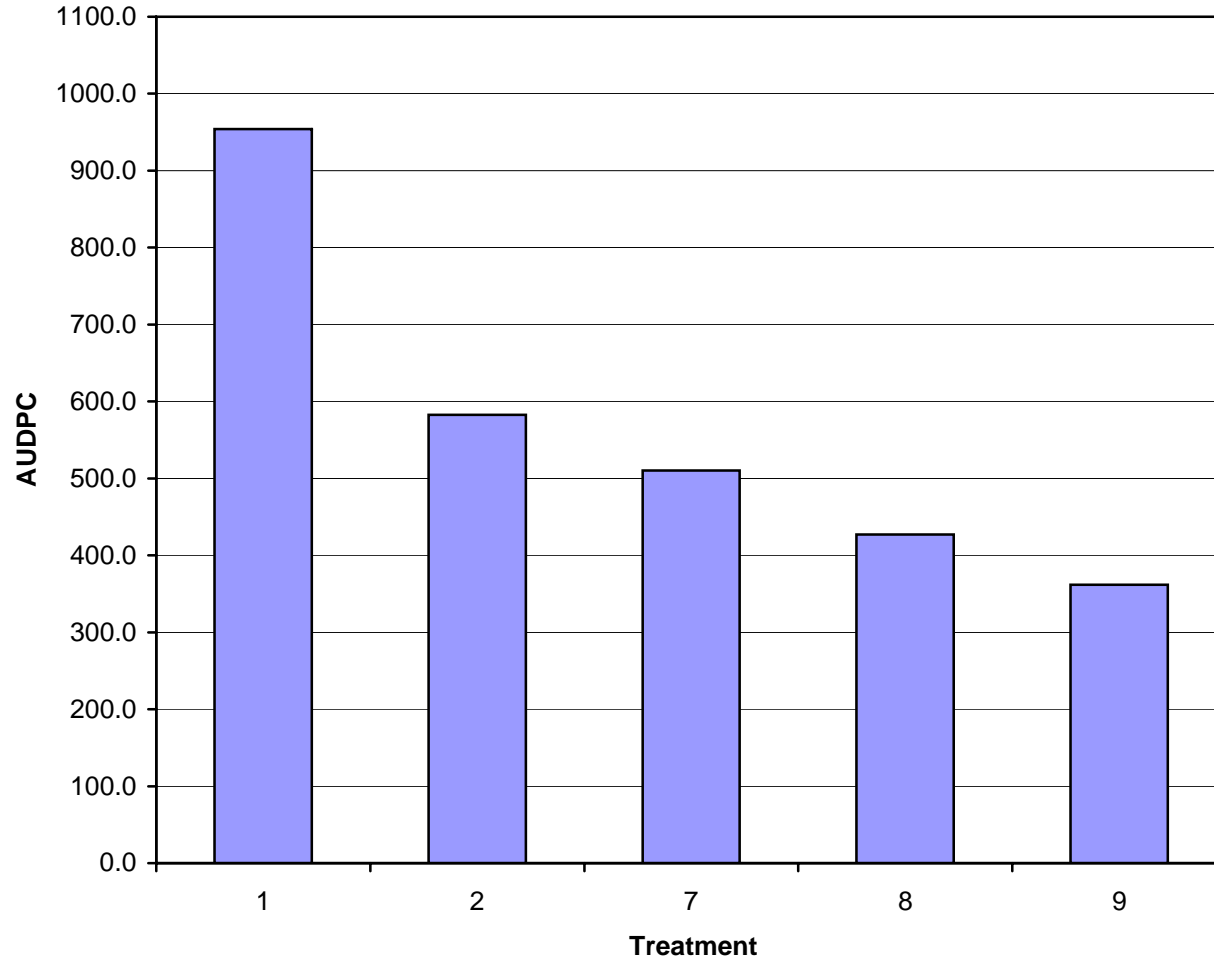


**Area Under the Disease Progress Curve for Early Blight
2004 Fungicide Trial, Colorado State University
San Luis Valley Research Center, Center, CO**



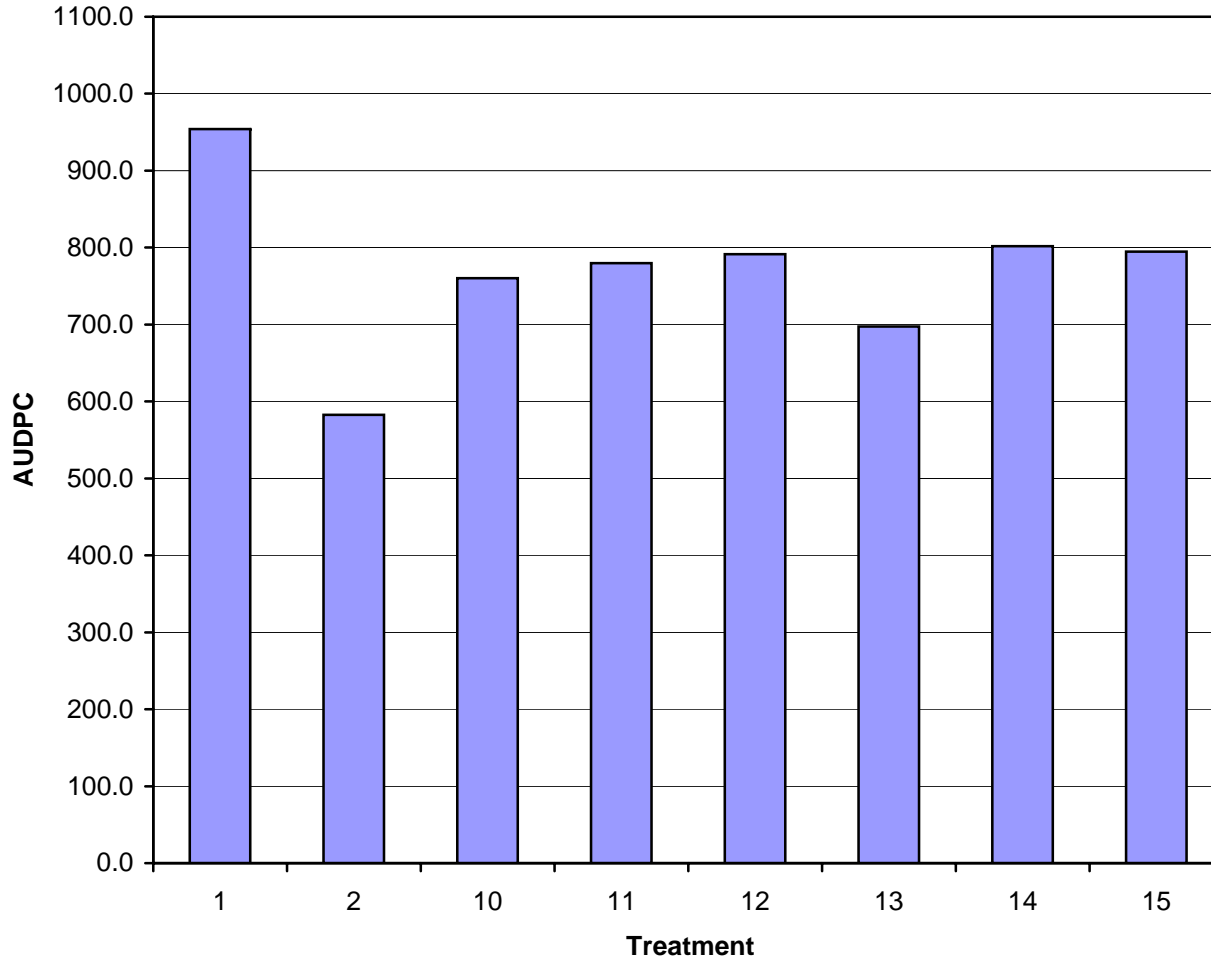
1. Control, no treatment
2. Dithane DF @ 2.0 lb./A (1-8)
3. Cuprofix MZ @ 4.0 lb./A (1) +
Penncozeb 75DF @ 2.0 lb./A (3,7) +
Headline @ 6.1 fl.oz./A (5)
4. Cuprofix MZ @ 4.0 lb./A (1) +
Penncozeb 75DF @ 3.0 lb./A (3,7) +
Headline @ 6.1 fl.oz./A (5)
5. Cuprofix MZ @ 4.0 lb./A (1,5) +
Penncozeb 75DF @ 2.0 lb./A (3,7)
6. Cuprofix MZ @ 4.0 lb./A (1,5) +
Penncozeb 75DF @ 3.0 lb./A (3,7) + Bond
@ 4.0 fl.oz./A (1,3,5,7)

**Area Under the Disease Progress Curve for Early Blight
2004 Fungicide Trial, Colorado State University
San Luis Valley Research Center, Center, CO**



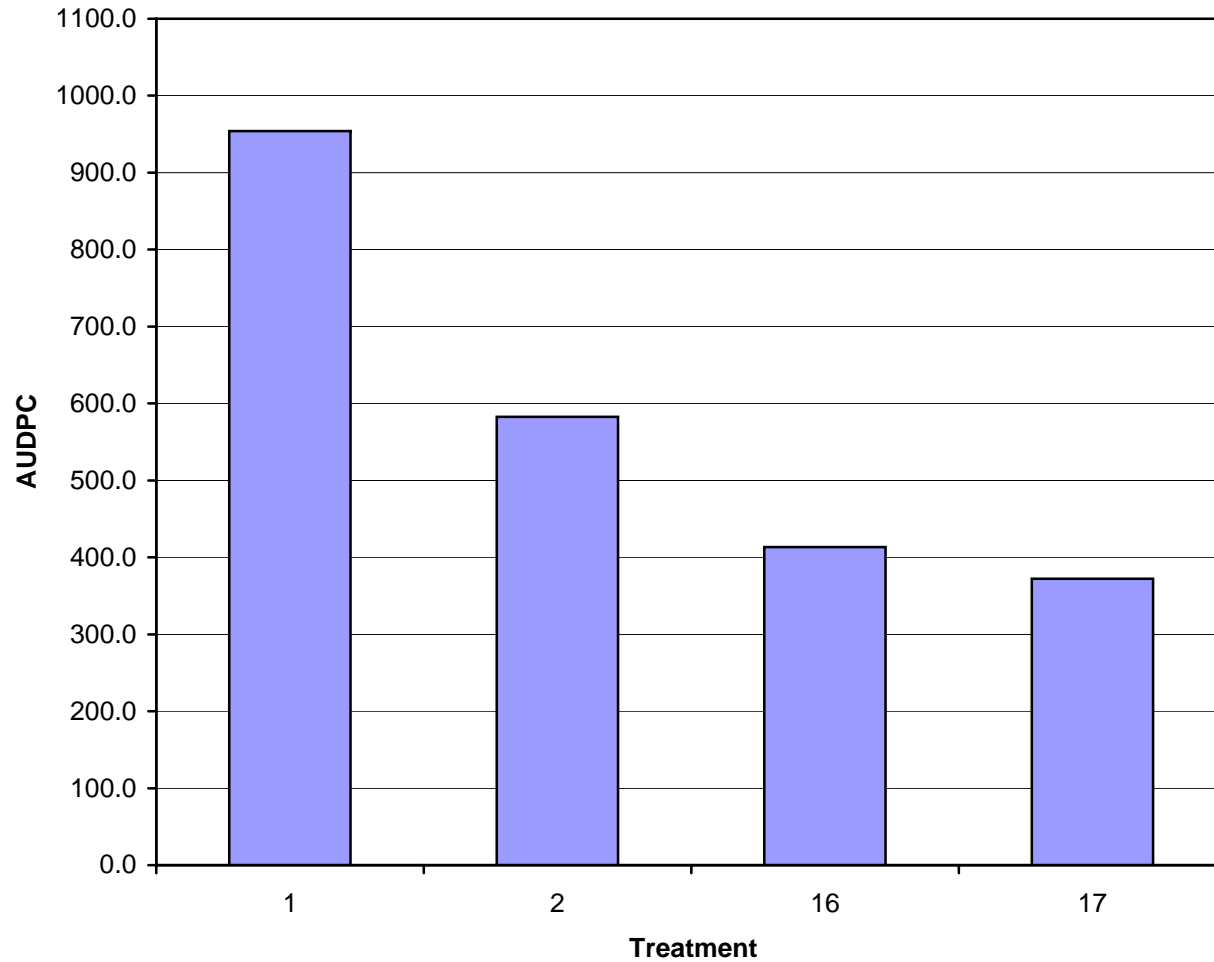
- 1. Control, no treatment
- 2. Dithane DF @ 2.0 lb./A (1-8)
- 7. Headline @ 6.0 fl.oz./A (1,5) + Preference @ 0.25 %v/v (1,5) + Dithane DF @ 2.0 lb./A (3,7)
- 8. Endura @ 2.5 oz./A (1,7) + Rivet @ 0.5 %v/v (1,7) + Headline @ 6.0 fl.oz./A (3) + Preference @ 0.25 %v/v (3) + Dithane DF @ 2.0 lb./A (5)
- 9. Amistar @ 2.0 fl.oz./A (1,5) + Bravo WS @ 1.25 pt./A (3,7)

**Area Under the Disease Progress Curve for Early Blight
2004 Fungicide Trial, Colorado State University
San Luis Valley Research Center, Center, CO**



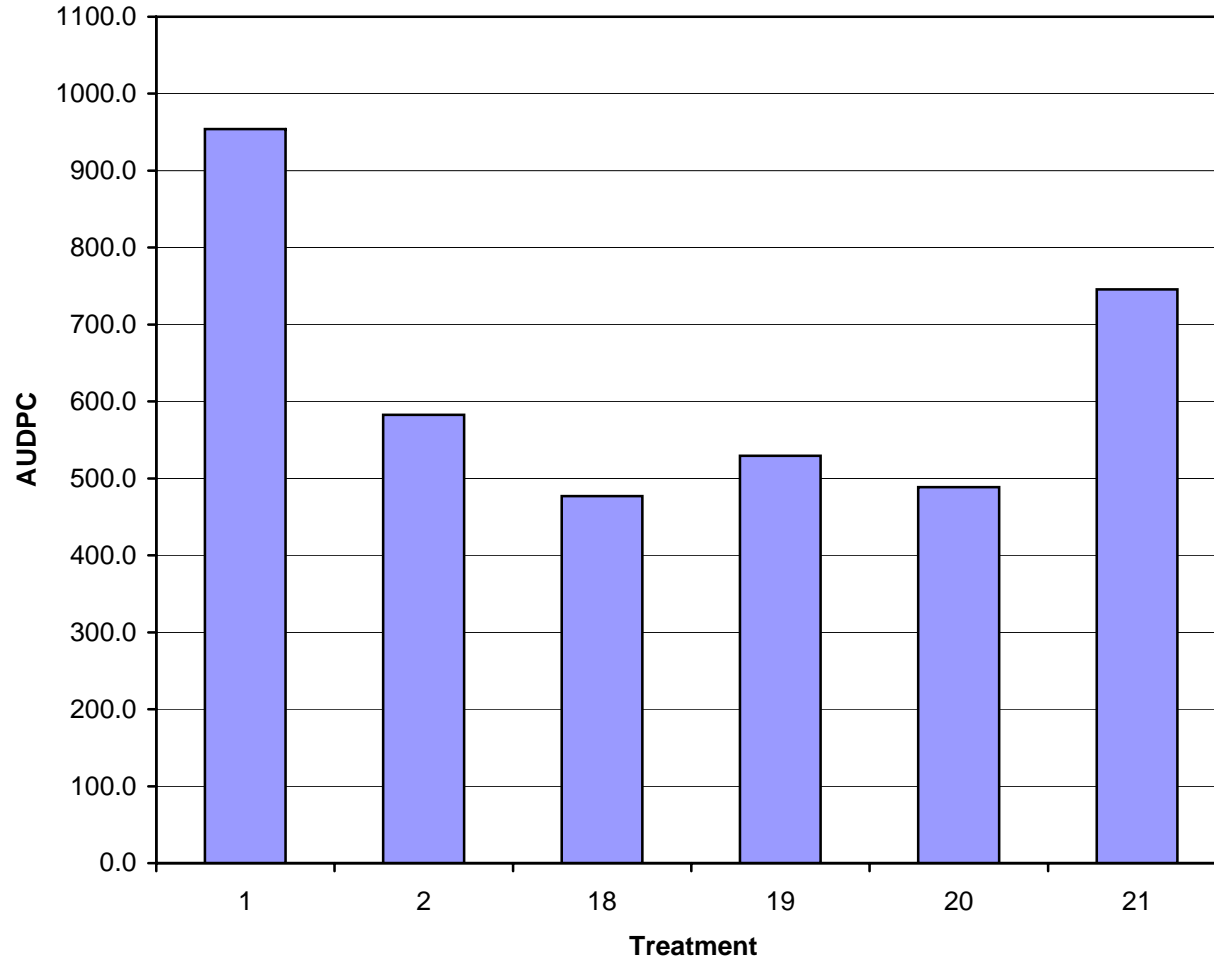
- 1. Control, no treatment
- 2. Dithane DF @ 2.0 lb./A (1-8)
- 10. AGM 04004 @ 32.0 fl.oz./A (5,7)
- 11. AGM 04010 @ 32 fl.oz./A (5,7)
- 12. AGM 04009 @ 32.0 fl.oz./A (5,7)
- 13. AGM 040024 @ 0.6 fl.oz./A + 10-52-10 @ 5.0 lb./A + Class Act @ 2.5 gal./100 gal. (1,4,8)
- 14. AGM 04024 @ 0.6 fl.oz./A (1,4,8)
- 15. AGM 04026 @ 6.0 fl.oz./A (1,4,8)

**Area Under the Disease Progress Curve for Early Blight
2004 Fungicide Trial, Colorado State University
San Luis Valley Research Center, Center, CO**



- 1. Control, no treatment
- 2. Dithane DF @ 2.0 lb./A (1-8)
- 16. Bravo WS @ 1.25 pt./A (1,5) +
Quadris @ 6.2 fl.oz./A (3,7)
- 17. Bravo WS @ 1.25 pt./A (1,5) +
Amistar @ 2.0 oz./A (3,7)

**Area Under the Disease Progress Curve for Early Blight
2004 Fungicide Trial, Colorado State University
San Luis Valley Research Center, Center, CO**



1. Control, no treatment

2. Dithane DF @ 2.0 lb./A (1-8)

18. Bravo WS @ 1.25 pt./A (1) +
Quadris @ 6.2 fl.oz./A (3) + Dithane
DF @ 2.0 lb./A (5) + SuperTin @ 2.5
oz./A (7)

19. Dithane DF @ 2.0 lb./A (1) +
Quadris @ 6.2 fl.oz./A (3) + SuperTin
@ 2.5 oz./A (5)

20. Bravo WS @ 1.25 pt./A (2) +
Quadris @ 6.2 fl.oz./A (3) + Bravo WS
@ 1.5 pt./A (5)

21. Champ 2F @ 1.0 pt./A (2) +
Polyram DF @ 2.0 lb./A (3) + Champ
2F @ 1.95 pt./A (5)