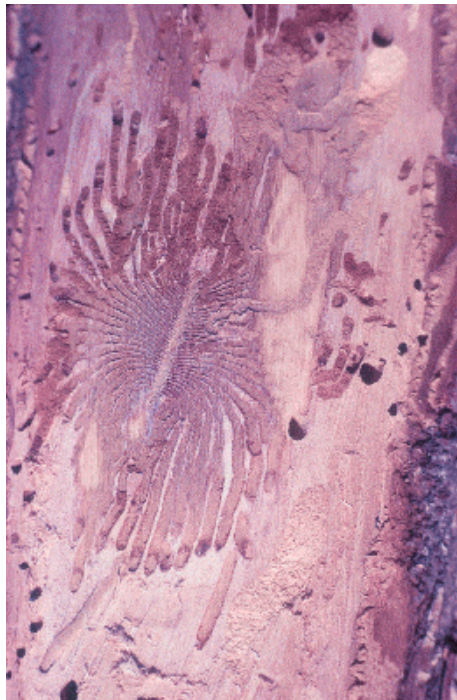


## **SMALLER EUROPEAN ELM BARK BEETLE**

*Scolytus multistriatus*

- Natural range -** This insect is native to Europe but is now found throughout much of the U.S., including Colorado
- Species affected -** All species of elm are attacked.
- Type of damage -** Adults feed in branch crotches of elm trees. They carry the fungus of the Dutch elm disease on their bodies, which they inoculate into the damaged branches. Later, after the trees die from Dutch elm disease they use the inner bark for breeding sites
- Symptoms -** Look for individual branches of elms with discolored and wilting foliage. Boring dust and galleries are found in the inner bark. Trees infected with Dutch elm disease ultimately die.
- Importance -** Provided that the adults do not carry the spores of the Dutch elm disease fungus, this insect is not damaging because it confines its attacks to recently dead trees and firewood. However, as the vector of Dutch elm disease, this insect can be extremely damaging.



Gallery of the smaller European elm bark beetle in the inner bark of elm