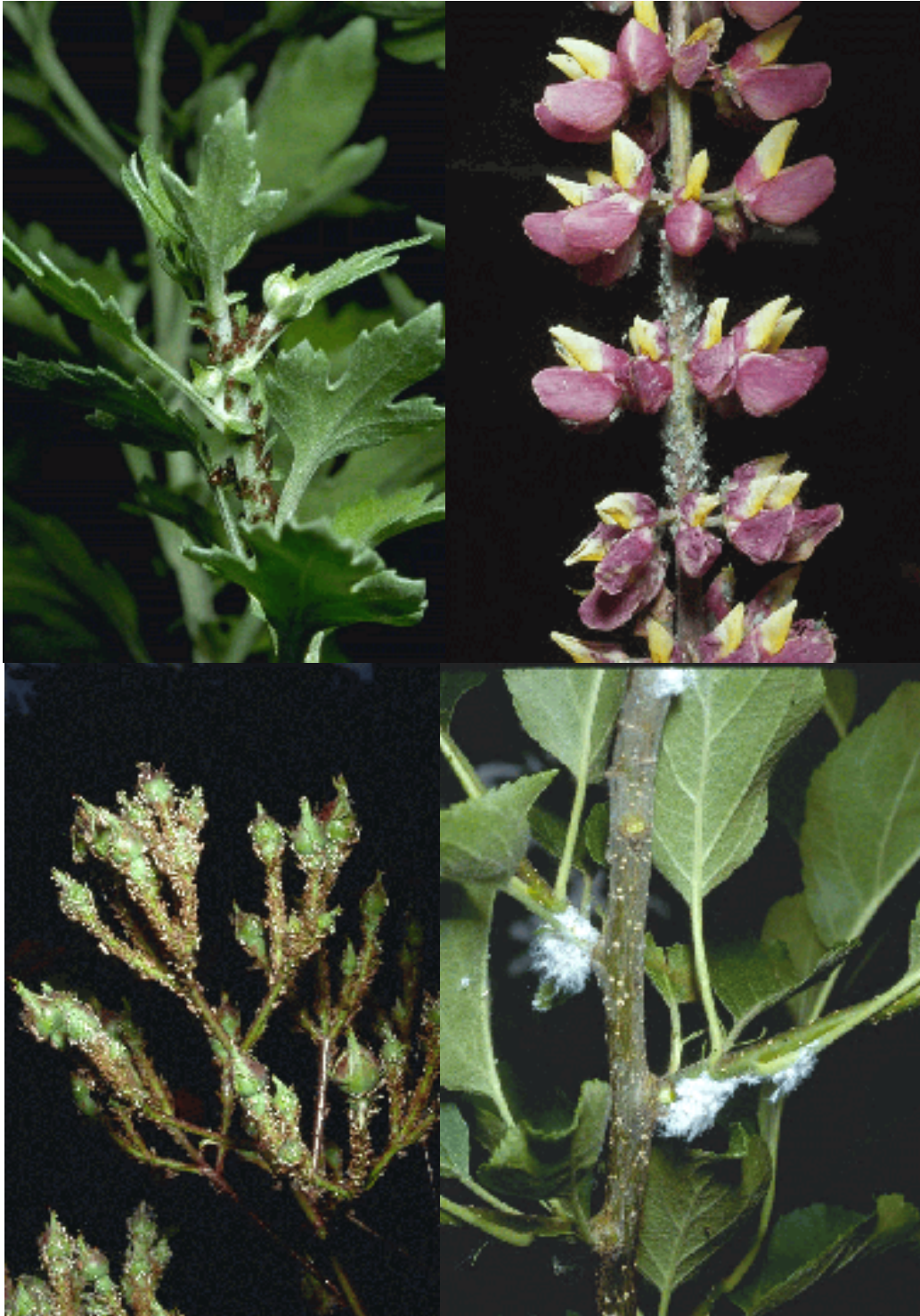


## **APHIDS OR PLANT LICE**

### *Family Aphididae*

- Natural range -** This is a large family of insects and can be found worldwide.
- Species affected -** Many plants are infested by aphids. In Colorado, some common host plants are aspen, birch, chrysanthemum, elm, fir, juniper, maple, pine, poplars, rose, spirea, spruce and willow.
- Type of damage -** Yellowing and drying of foliage, dieback of tender young shoots sometimes leading to death of infested plants. Aphids also produce copious amounts of honeydew, a sweet, sticky material that can cover the surface of automobile and can be annoying. The honeydew also promotes growth of black sooty mold.
- Symptoms -** Symptoms include drying or dead foliage and shoots and presence of honeydew and black sooty mold. Colonies of greenish, yellowish or occasionally dark brown to black, soft bodied insects feeding on foliage and/or tender young shoots.
- Importance -** Aphids are among the most common insects pests of garden plants. They are soft bodies insects that suck plant juices. Most species will feed on only one or two hosts. If not properly controlled, they can cause severe damage, occasionally leading to plant death.
- Remarks -** Ladybird beetles are important natural enemies of aphids and quite often the first evidence of an aphid infestation is an abundance of ladybird larvae, pupae and adults.

*(See following pages for photos)*



Aphids or plant lice  
Upper left – aphids on chrysanthemum  
Upper right – aphids on lupine  
Lower left – rose aphid  
Lower right – woolly apple aphid



Life stages of ladybird beetles. These insects are natural enemies of aphids  
Left – Larval stage. Ladybird beetle larvae are often mistaken for destructive pests.  
Right – Adult ladybird beetle.